

**POU/POD Transfer Application Map
for Randy Harvey
Certificates 13161, 13116**
T5N, R36E, W.M.
Section 25
SW 1/4
Umatilla County, Oregon

Legend

-  13161 - Not Involved in Transfer
-  13116 - Not Involved in Transfer
-  13161 - From Lands
-  13116 - From Lands
- POD ● Point Of Diversion

POD Location

Located 176 feet South and 970 feet East from the SE Corner of SW 1/4 SE 1/4 corner, section 25 T5N R36E, W.M.

Disclaimer

This map was prepared for the purpose of identifying the location of a water right only and it is not intended to provide legal dimensions or location of property ownership lines.

Map Notes

Date: 12/30/20
Data Sources: ESRI
Prepared By: GeoEngineers

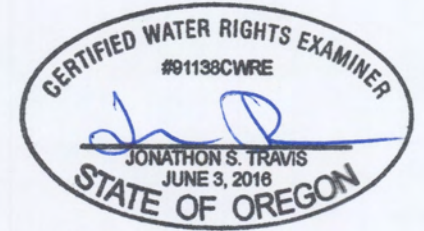
RECEIVED

JAN 04 2021

OWRD



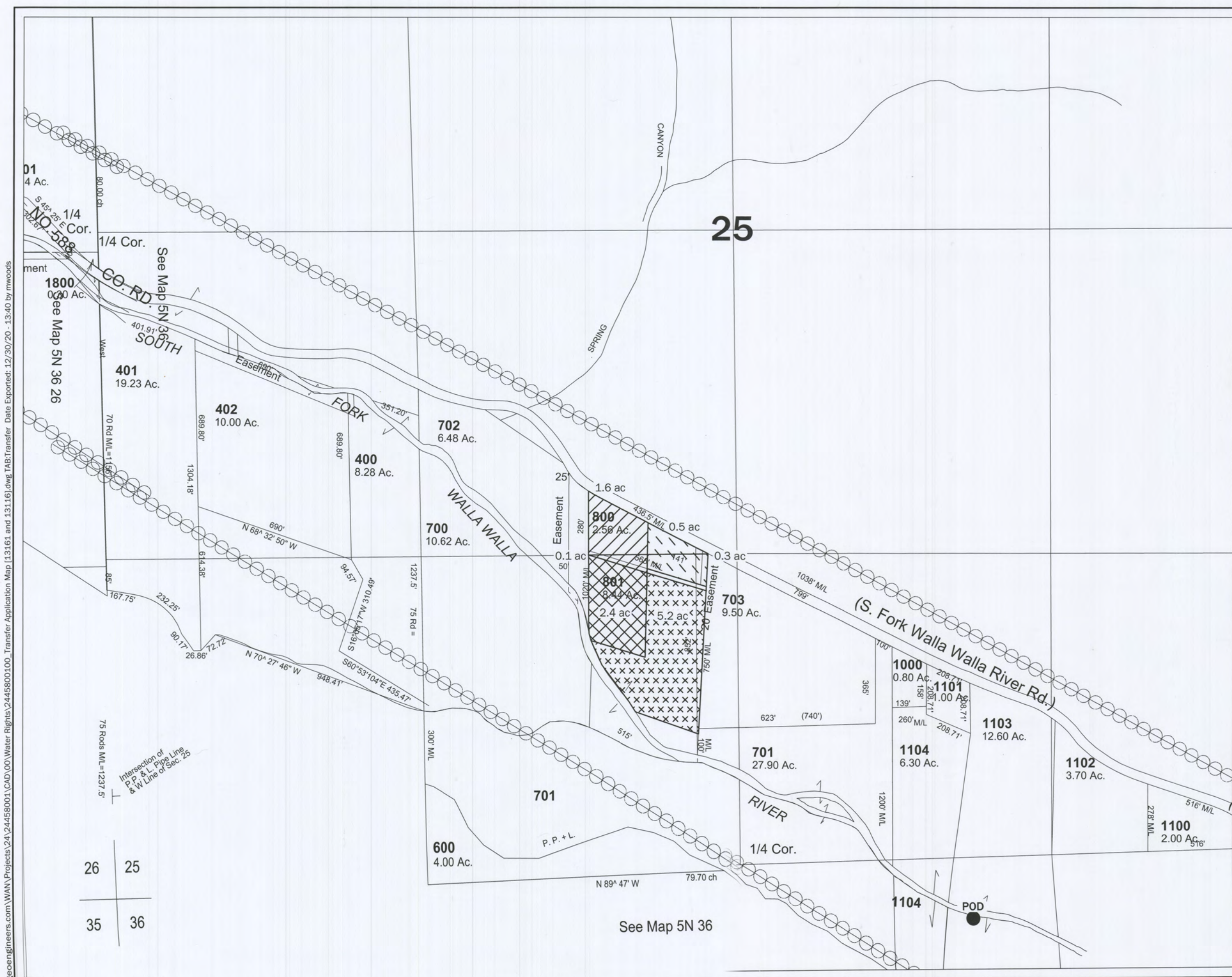
Certified Water Rights Examiner Stamp



EXPIRES: 6/30/22

GEOENGINEERS

13591



\\geoengineers.com\WAN\Projects\24\24458001\CAD\00\Water Rights\2445800100_Transfer Application Map [13161 and 13116].dwg TAB:Transfer Date Exported: 12/30/20 - 13:40 by mwwoods

26	25
35	36

See Map 5N 36