

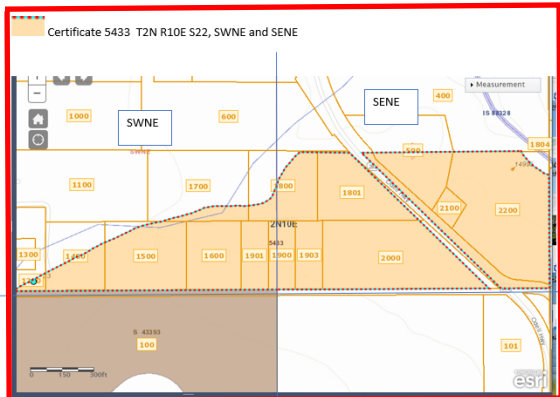
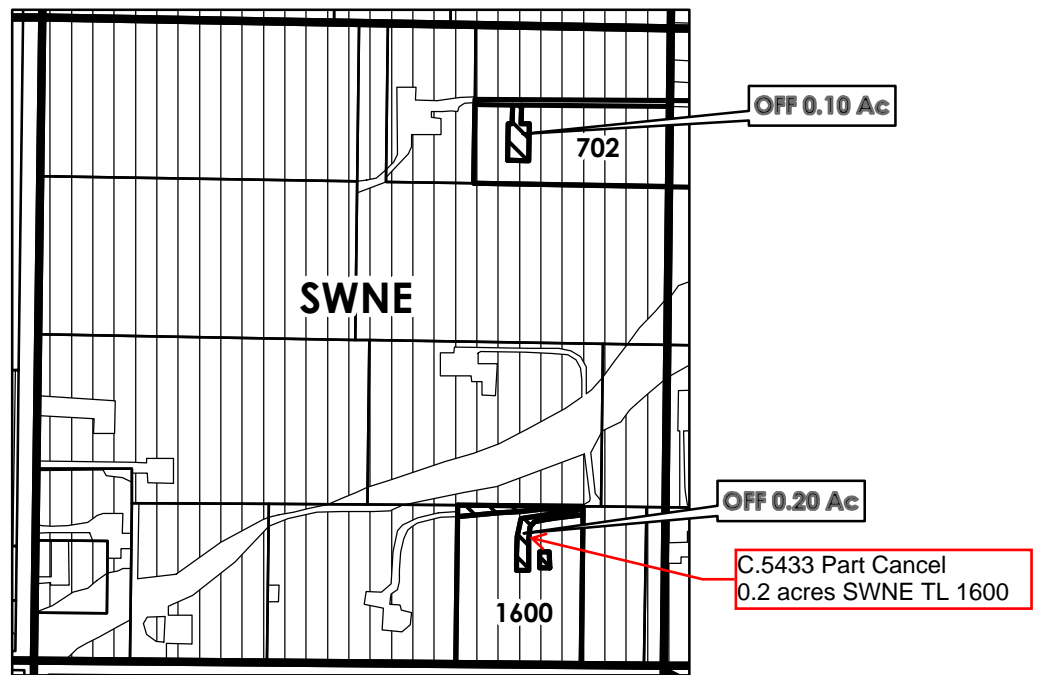


**OWRD RECEIVED**  
Ann Reece, 4/26/2022, 10:58:27 AM

# HOOD RIVER COUNTY SEC. 22A T02N R10E SCALE - 1" = 400'



## SW 1/4 OF THE NE 1/4



OFF 0.20 Ac

C.5433 Part Cancel  
0.2 acres SWNE TL 1600

**C 1/4 COR**

Cert 92000 35.80 Ac

	OFF LANDS - 92000
	EXISTING WATER RIGHTS

### APPLICATION FOR PERMANENT WATER RIGHTS TRANSFER

<b>FROM: ROBERT GRAVES</b>	<b>TAX LOT: 702</b>	<b>0.10 ACRE</b>
<b>FROM: ROBERT K MARVIC, CISMONTANE INC.</b>	<b>TAX LOT: 1600</b>	<b>0.20 ACRE</b>