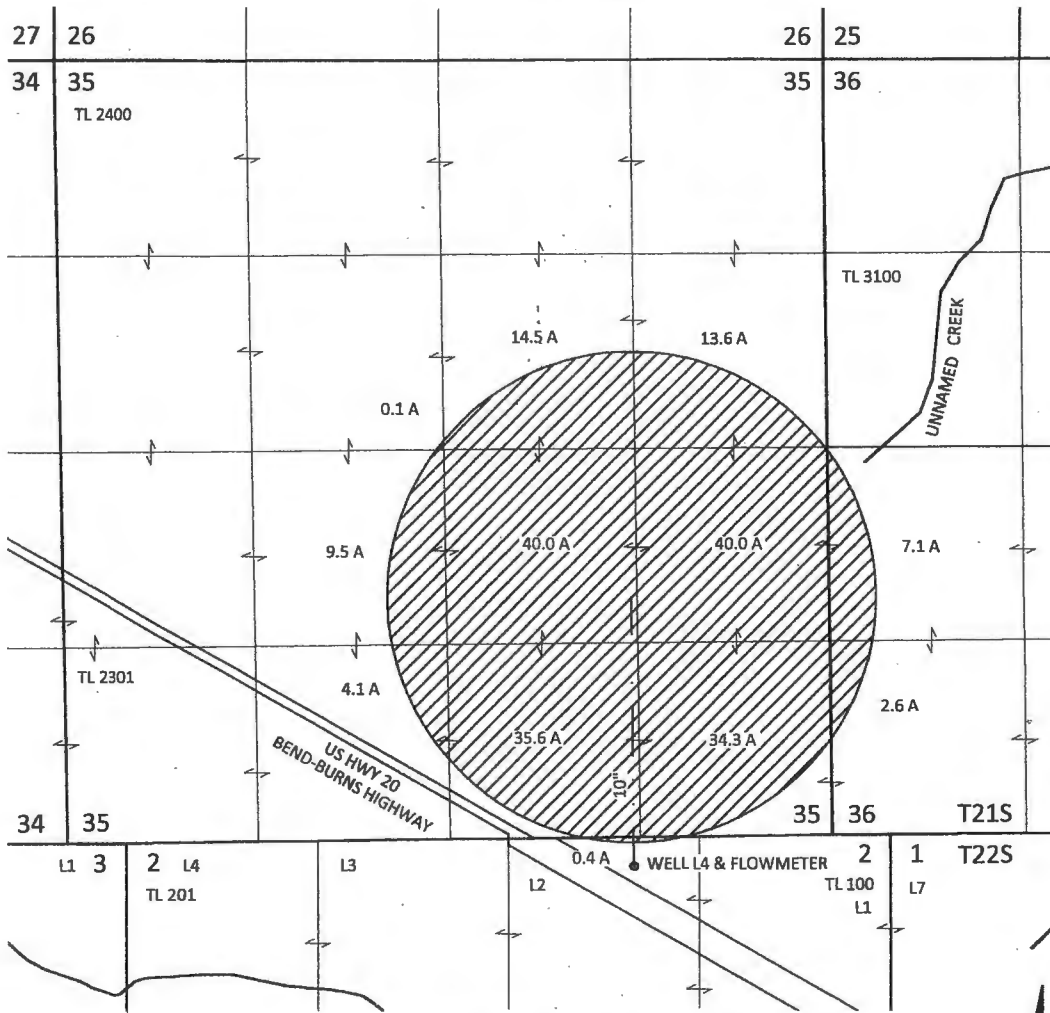


Sections 35 & 36, T21S, R20E
and Section 2, T22S, R20E, W.M.,
Deschutes County, Oregon

RECEIVED
SEP 20 2019
OWRD

Application G-17585
Permit G-17066
CLAIM OF BENEFICIAL USE MAP
James Milgard






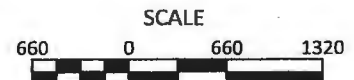
WELL LOCATION: 210 FT S AND 1350 FT W FROM SE CORNER OF SECTION 35, T21S, R20E, W.M.

SITE INSPECTION CONDUCTED JULY 17, 2019



EXPLANATION

-  PLACE OF USE - IRRIGATION
201.8 ACRES
PRIORITY: SEPTEMBER 24, 2012
-  WELL
-  PIPE



September 11, 2019

This map is not intended to provide legal dimensions or locations of property ownership lines

Figure 1

SKOOKUM
WATER ASSOCIATES INC

1626 VICTORIAN WAY
EUGENE, OR 97401
(503) 319-8926