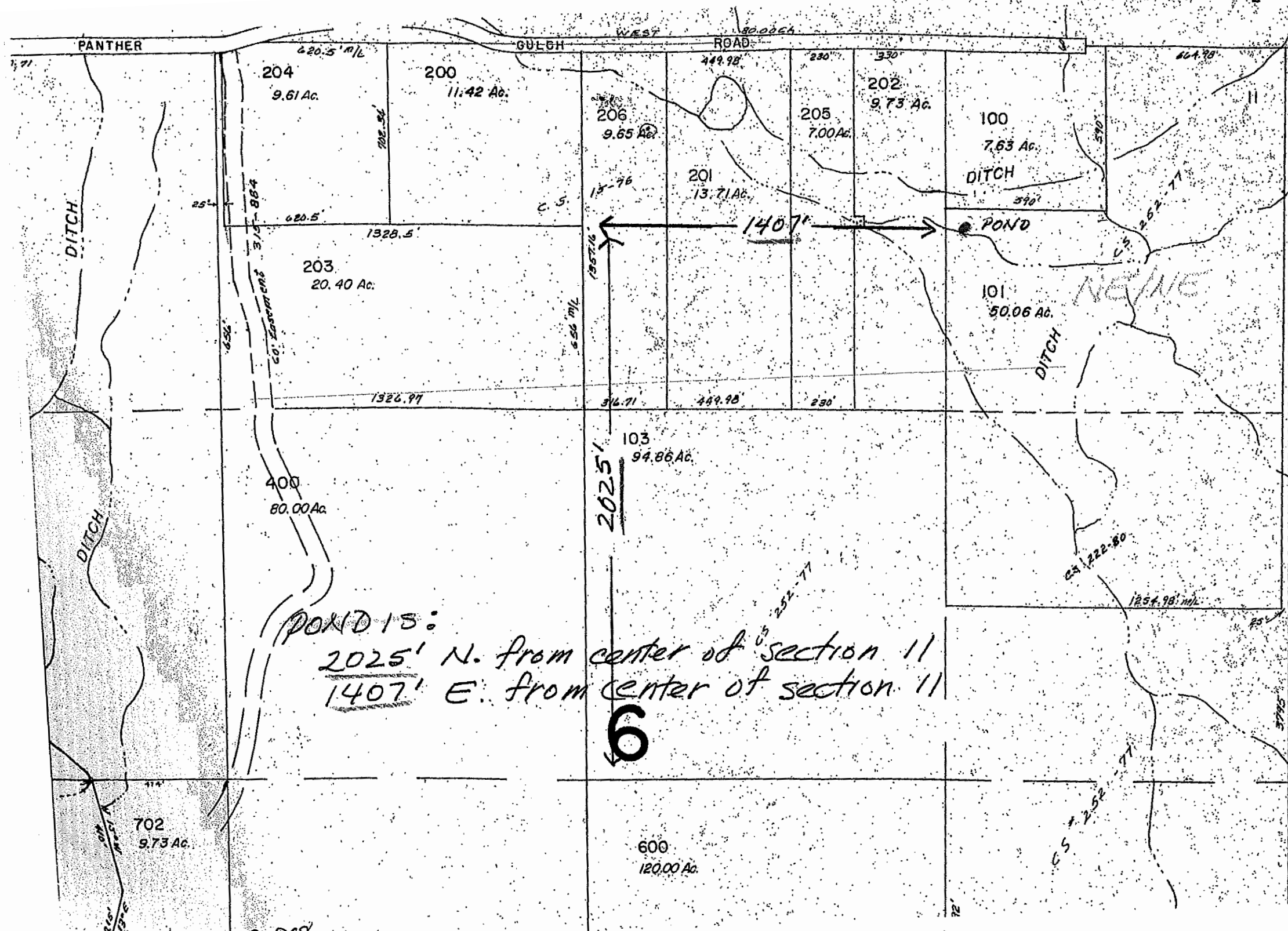




Sub 609

RECEIVED
MAR 08 2021
OWRD

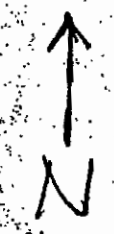


Scale 1" = 400'
 Joseph & Pamela Fichtner

CANCELLED T.L.

102
 500
 290

39-S
 S.W
 11
 NE 1/4-NE 1/4
 TAX LOT-101



39 5 12

RECEIVED

AUG 13 2007

MAP WATER RESOURCES DEPT
 SALEM, OREGON

POND IS:
 2025' N. from center of section 11
 1407' E. from center of section 11

6

appno R-86958