

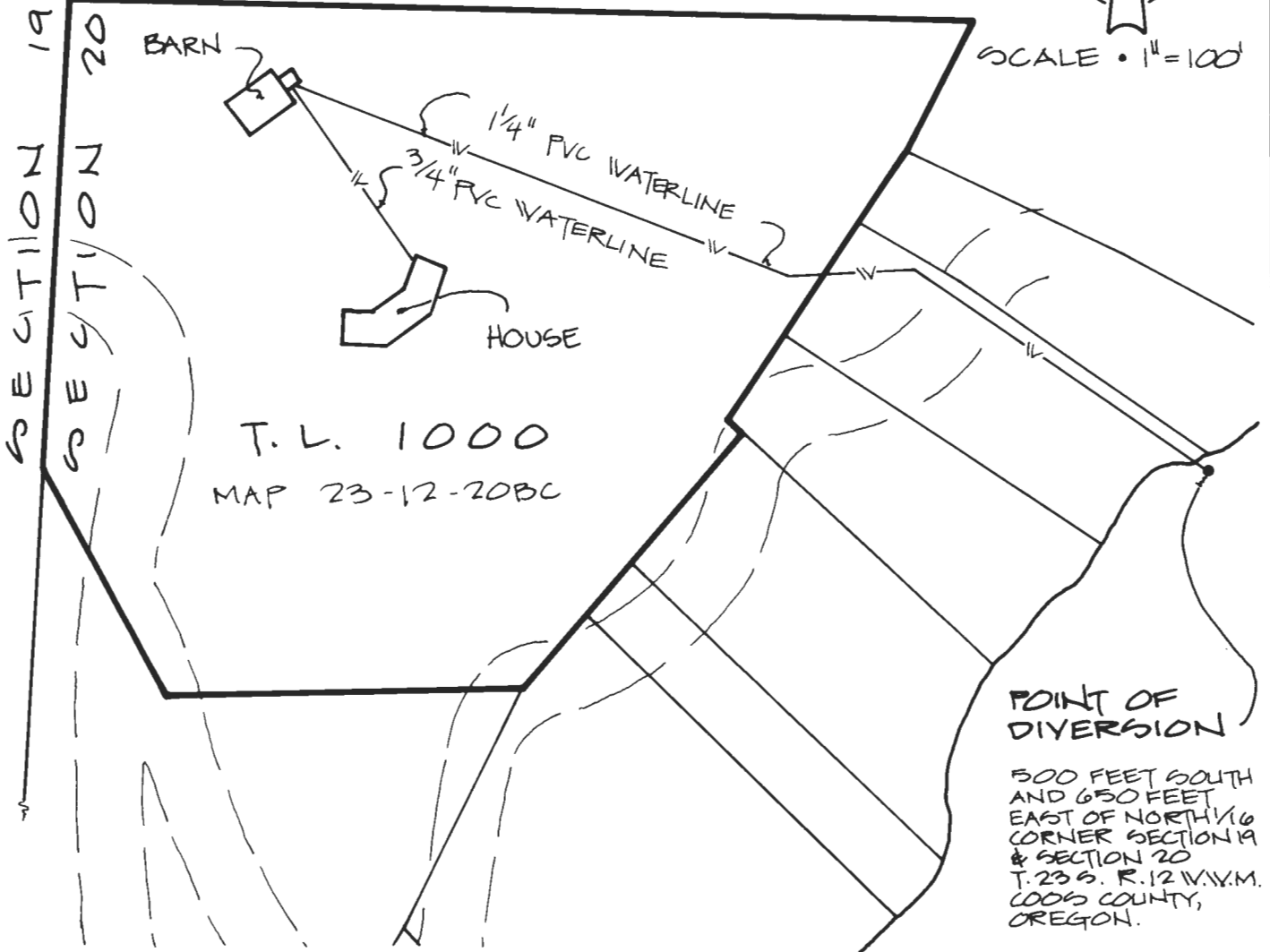
T. 23 S. R. 12 W. W.M.
SECTION 20

NE 1/4
NE 1/4
NW 1/4 NW 1/4
SE 1/4
SE 1/4
SW 1/4 NW 1/4

NORTH 1/16 COR. SECTIONS 19 & 20



SCALE • 1" = 100'



FINAL PROOF SURVEY

UNDER
APPLICATION # 6-80668 PERMIT # 52697
IN THE NAME OF
ELEANOR MALZAHN

RECEIVED

MAY 20 1997

WATER RESOURCES DEPT.
SALEM, OREGON

