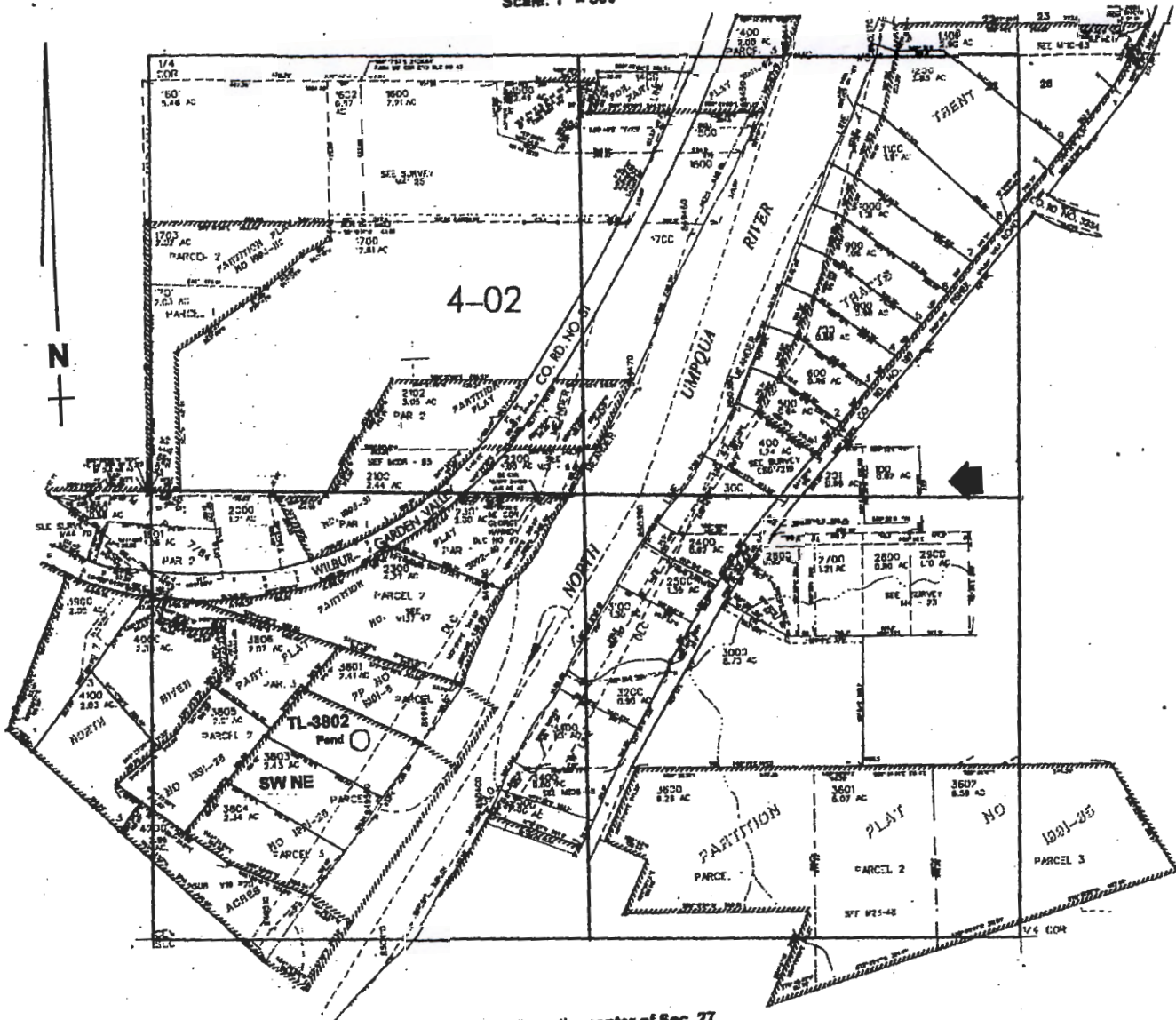


NEV4 SEC. 27 T.26S. R.6 W W.M.
DOUGLAS COUNTY

Scale: 1" = 500'



Pond is located 600 ft. N. and 640 ft. E. from the center of Sec. 27

RECEIVED

NOV 1 R 2002

WATER RESOURCES DEPT.
SALEM, OREGON

RECEIVED

APR 27 2018

OWRD

app # R-85343
PAR # R-1340X