

# WATER RIGHTS APPLICATION MAP

T9S, R5W, WM

S 25, Taxlot 400 (also in S 26)

S 36, Taxlot 300 (also in S 35)

OLSEN AG - MULKEY HILL

POLK COUNTY, OR

WILLAMETTE RIVER BASIN



RECEIVED

OCT 26 2020

OWRD

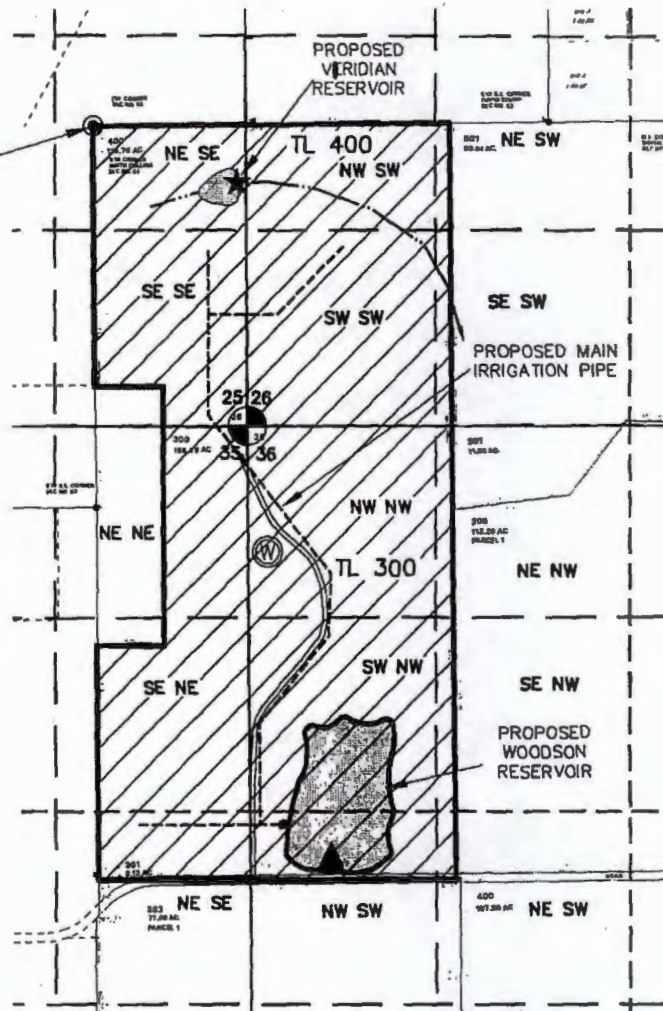
RECEIVED

DEC 01 2020

OWRD

NW corner  
Smith Collins  
DLC 64

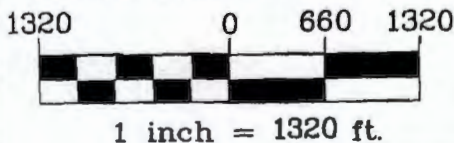
IRRIGATION ACREAGE		
SEC. 25	NE SE	17.3 AC
	SE SE	29.5 AC
	TOTAL - 46.8 AC	
SEC. 26	NW SW	22.0 AC
	SW SW	40.0 AC
	NE SW	1.7 AC
	SE SW	3.6 AC
	TOTAL - 67.3 AC	
SEC. 35	NE NE	17.4 AC
	SE NE	29.5 AC
	NE SE	11.1 AC
	TOTAL - 58.0 AC	
SEC. 36	NW NW	40.0 AC
	NE NW	3.6 AC
	SW NW	40.0 AC
	SE NW	3.9 AC
	NW SW	14.0 AC
	NE SW	1.4 AC
TOTAL - 102.9 AC		
TOTAL IRRIGATED AC 275.0		



- Ⓜ Well is 2900 ft south and 1210 ft east of NW corner Smith Collins DLC 64
- ▲ Woodson Point of Diversion is 5000 ft south and 1650 ft east of NW corner Smith Collins DLC 64.
- ★ Veridian Point of Diversion is 400 ft south and 990 ft east of NW corner Smith Collins DLC 64

- Proposed main irrigation pipe (approx. location—system not designed)
- Potential irrigation area
- Unnamed intermittent stream

THIS MAP WAS PREPARED FOR THE PURPOSE OF IDENTIFYING THE LOCATION OF A WATER RIGHT ONLY AND IS NOT INTENDED TO PROVIDE LEGAL DIMENSIONS OR LOCATION OF PROPERTY OWNERSHIP LINES.



MAP BASE:  
ASSESSOR MAPS 9S 5 36,  
& 9S 5 25

RECEIVED

MAR 03 2008

WATER RESOURCES DEPT  
SALEM, OREGON

Note: The proposed winery is NW of the well, but not constructed yet.



Project: 307-2-135  
Drawing: 30721350A—Mulkey Res.WR.dwg  
By: CVB/WPK  
Checked by: EAU  
Date: 2-11-08