

Diminution Map from Part of C #95470

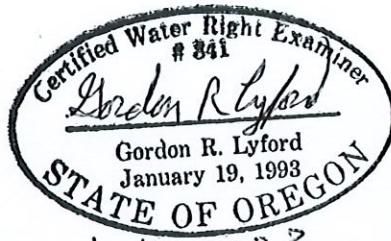
T 38 S, R 8 W, WM, Josephine County

Portions of Sections 9, 10, and 11

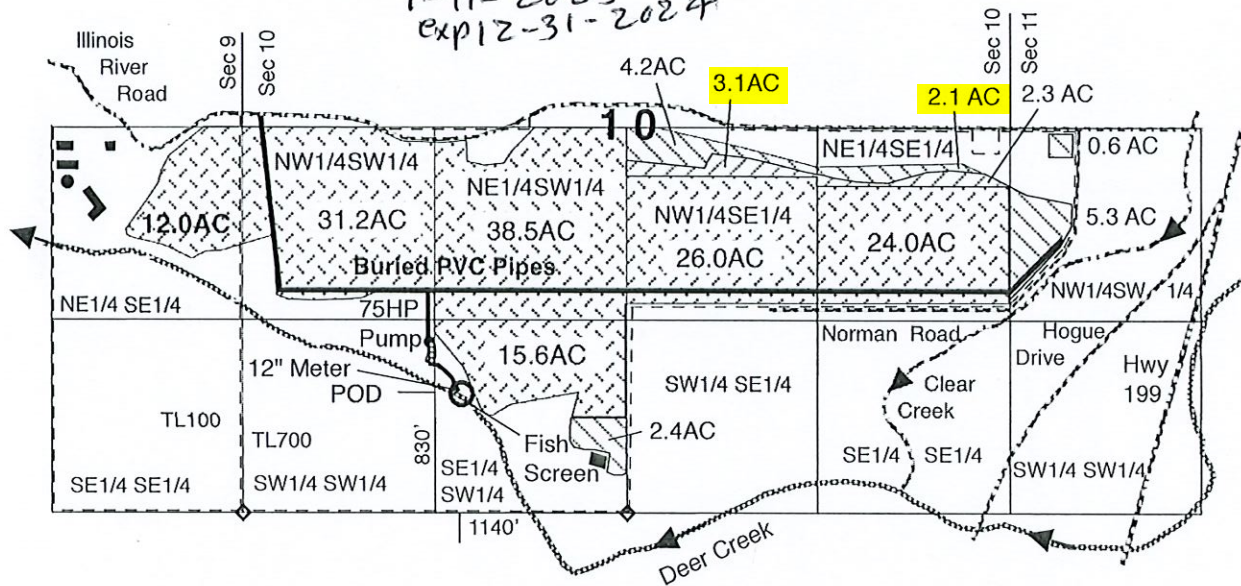
January 11, 2023

RECEIVED
JAN 19 2023
OWRD

N
1" = 1320'



1-11-2023
exp 12-31-2024



From Application S-22760, Permit S-17867, and Certificate 95470 with a priority of August 15, 1947 for irrigation and supplemental irrigation at a rate of 1/50 cfs per acre from Deer Creek.

- POD located 1140 feet west and 830 feet north from the S1/4 corner of section 10.
- ▨ 5.4 acres of primary irrigation rights from C #95470 layered on C #95694 primary irrigation rights to be diminished to supplemental irrigation.
- ▨ 14.6 acres of primary irrigation rights from C #95470 to be maintained.
- ▨ 147.3 acres of supplemental irrigation rights from C #95470 to be maintained.
- ▨ Streams and pool
- ▨ Buildings
- ▨ Roads
- ▨ Tax lots

This map was drawn by Gordon R. Lyford for the Siskiyou Field Institute to support their diminution of 5.4 acres of primary irrigation to supplemental irrigation. The SFI owns tax lots 100 and 700.

This map was prepared for the purpose of identifying the location of water rights only and is not intended to provide legal dimensions or the location of property ownership li res.