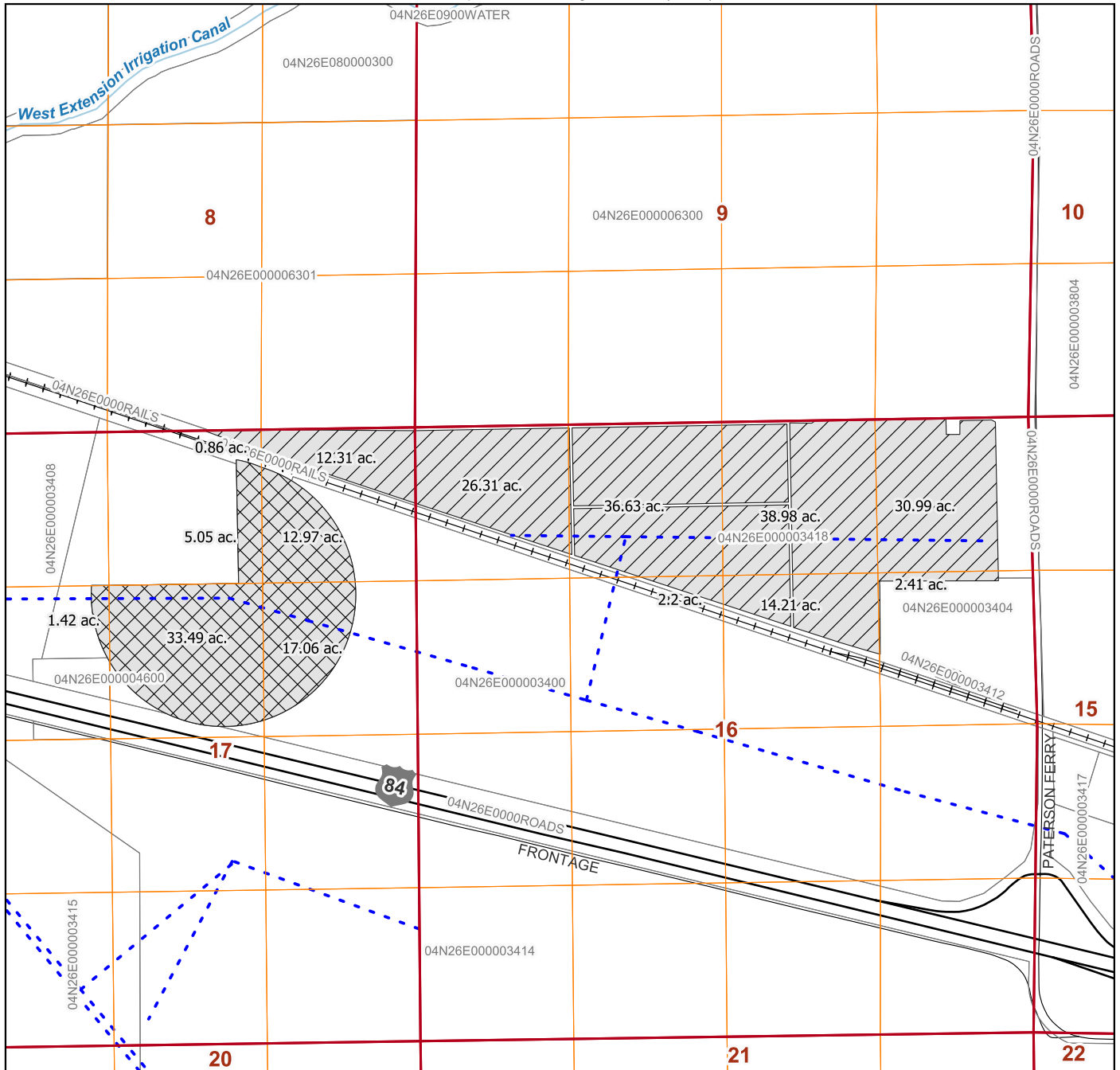




Application for a Permanent Water Right Transfer - FROM Lands Map Certificate 92994

A Water Right in the Name of Farmland Reserve, Inc.
Morrow County
Township 4 North, Range 26 East (W.M.)







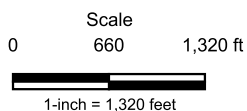
LEGEND

Place of Use

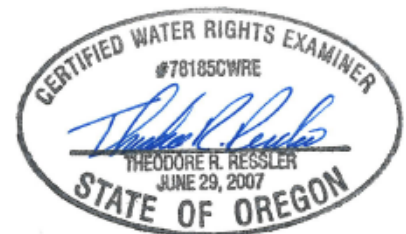
-  From Lands (164.90 acres)
-  Remaining Lands (69.99 acres)

Other Features

-  Pipeline
-  Railroad
-  Road
-  Watercourse



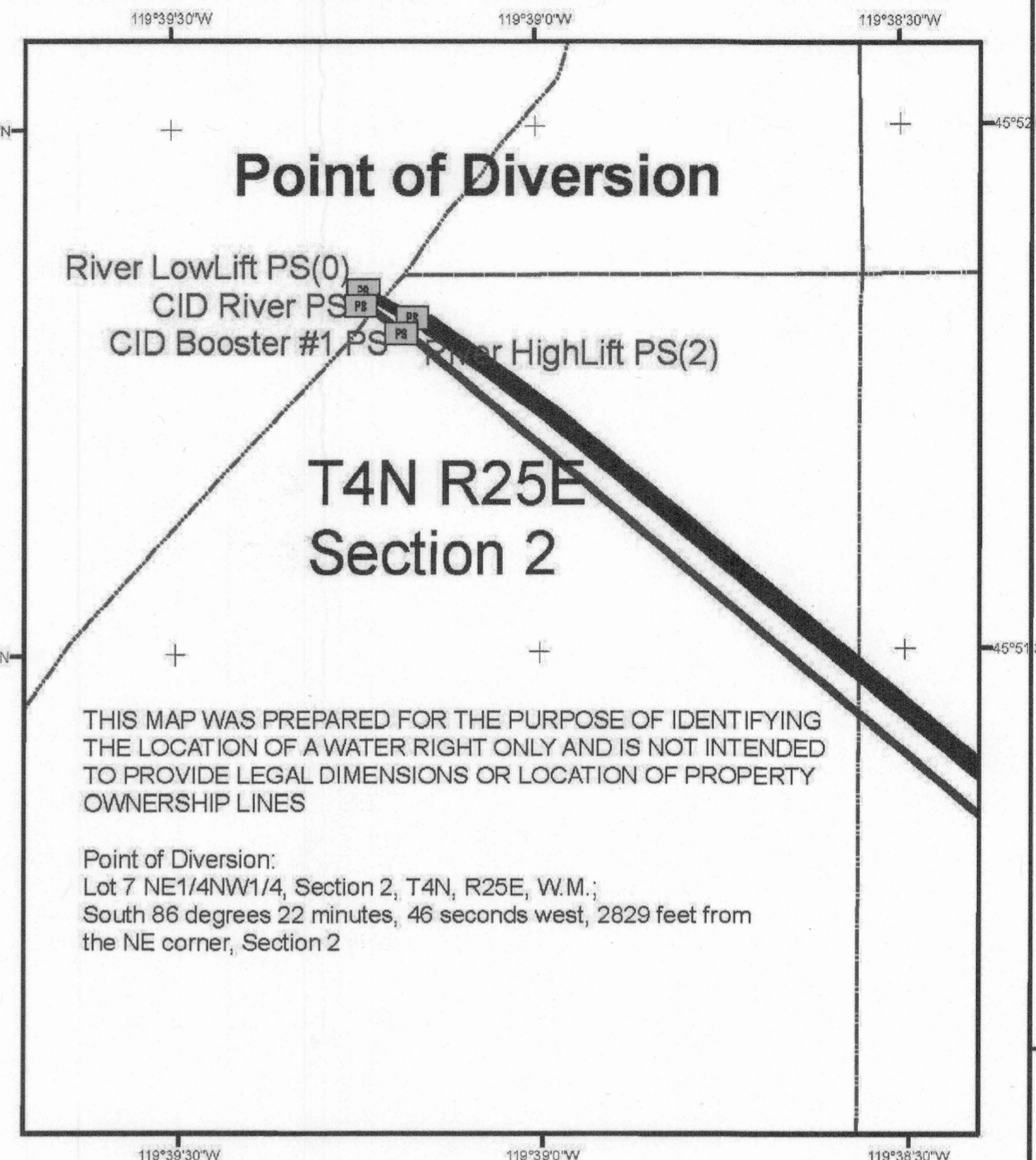
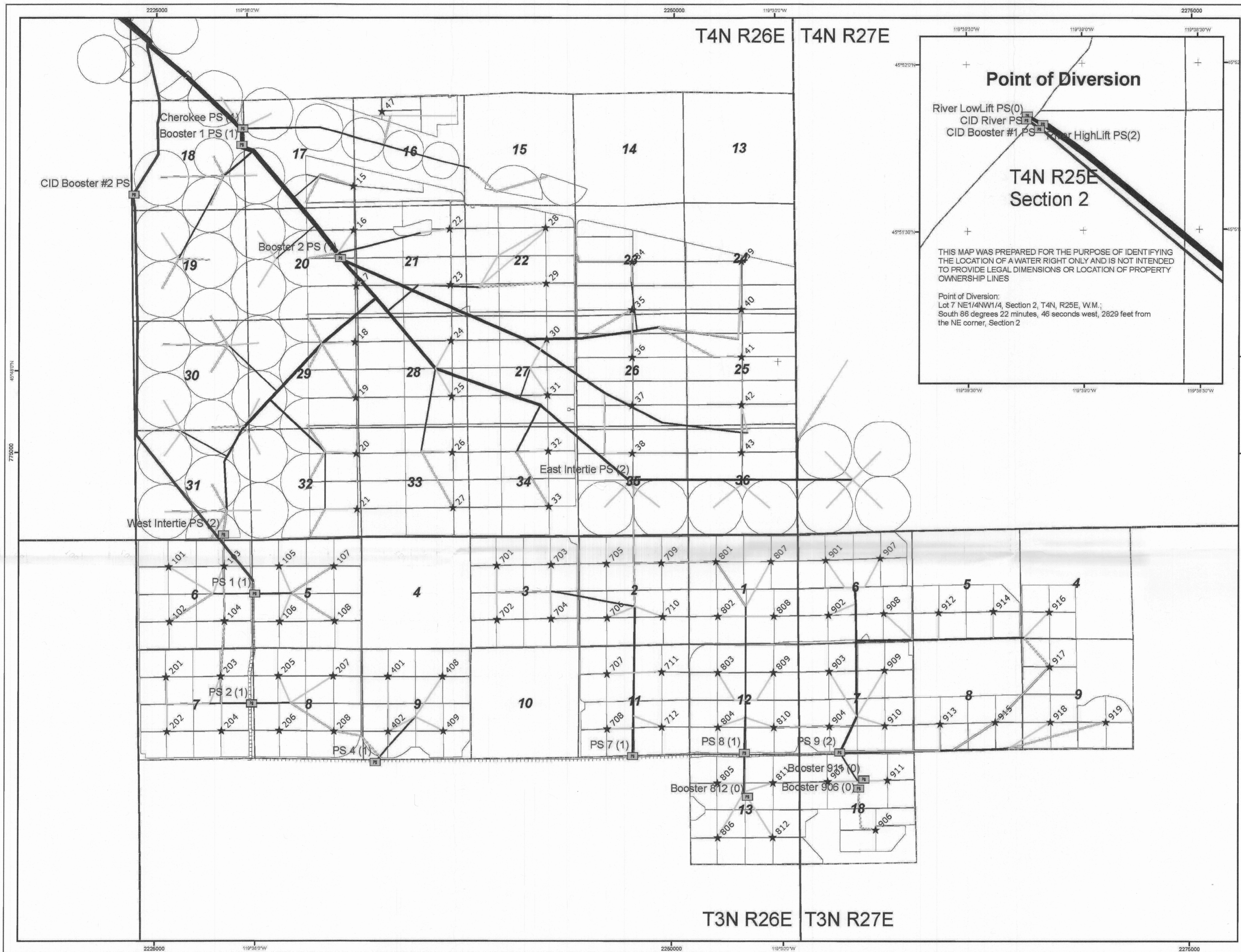
Date: 6/10/2022
Data Sources: BLM, OGIC, ESRI, USGS, Morrow Co.
Disclaimer: This map was prepared for the purpose of identifying the location of a water right only and is not intended to provide legal dimensions or location of property ownership lines.



RENEWS: 12-31-2022
CWRE Seal and Signature



RECEIVED
NOV 03 2016
OWRD



- Legend**
- Pump Station (No. of Flow Meters)
 - ★ Manifold
 - CID Canal
- Mainline Material, Dia.(in)**
- PVC, 4
 - PVC, 8
 - PVC, 10
 - PVC, 12
 - PVC, 15
 - PVC, 16
 - Steel, 12
 - Steel, 14
 - Steel, 16
 - Steel, 18
 - Steel, 20
 - Steel, 22
 - Steel, 24
 - Steel, 26
 - Steel, 30
 - Steel, 36
 - Steel, 42
 - Steel, 48
 - Steel, 54
 - Steel, 60
 - Steel, 72
- T&R
 - Section
 - circles
 - trees

Drawn By: ADB
OR North State Plane
NAD 27 (FT)
Date 01/05/07

N

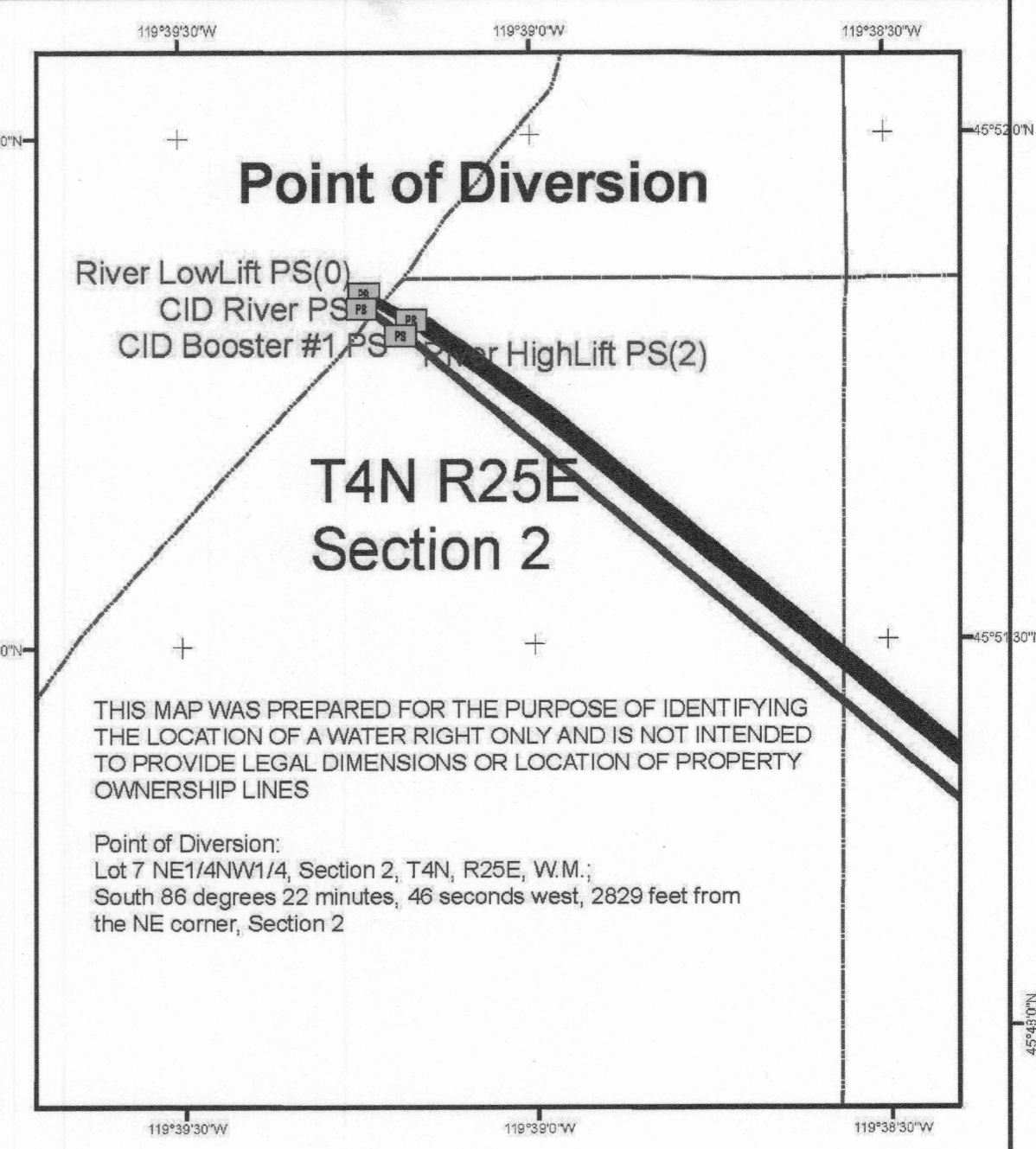
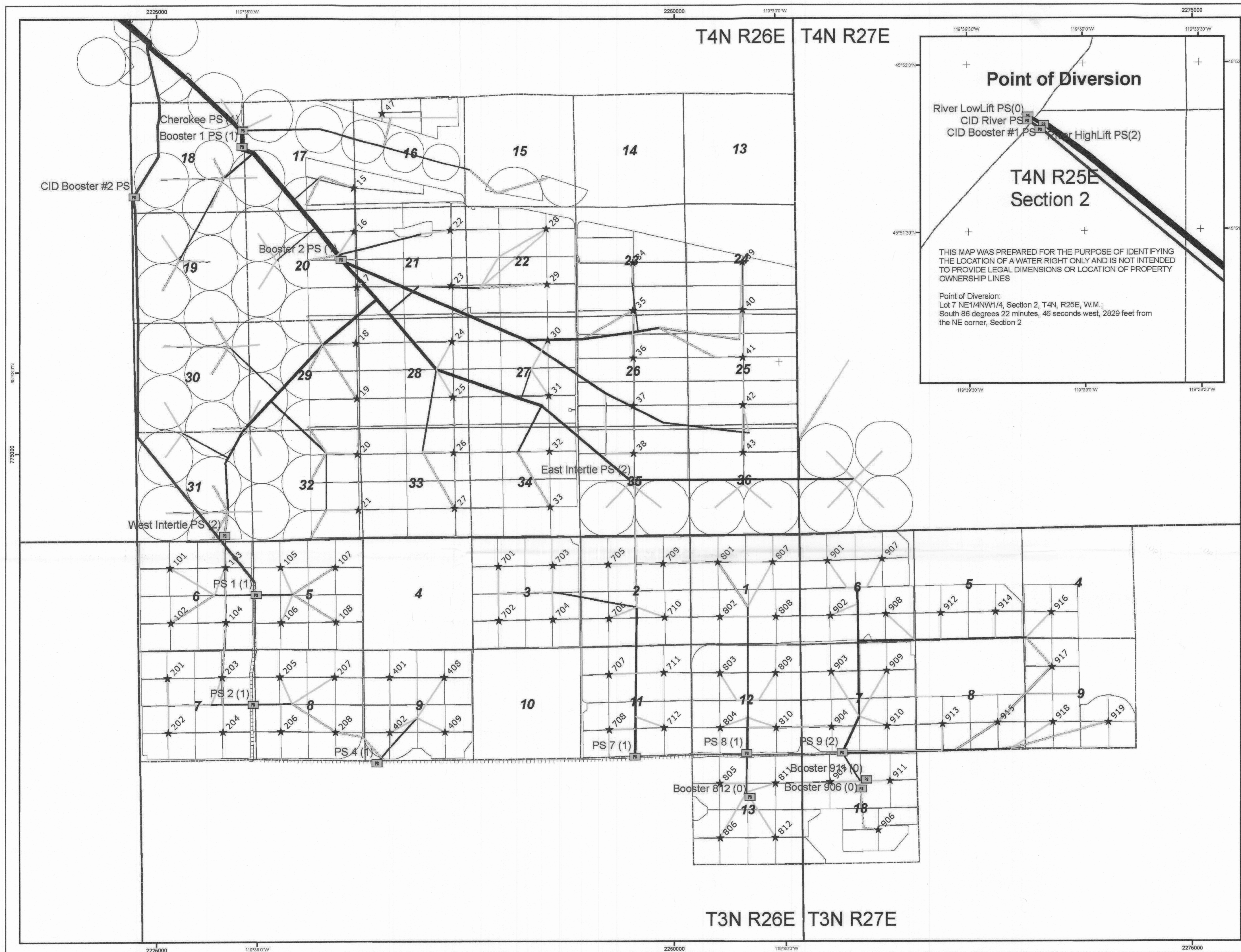
0 0.25 0.5
Miles

1 inch = 0.5 miles

This map was reproduced from a Water Distribution System and Flow Meter Location map submitted to OWRD by Potlatch Corporation in 2007 for the claim of Beneficial Use on Transfer T-8753, T8675, T8616, T8298, T8617 Lands subject to these transfers were served by the same distribution system as the current transfers. This map represent the existing distribution system for the drip irrigation of trees prior to any modifications to convert the system back to irrigation with center pivots.

Water Distribution System and Flow Meter Location Map
Applies to Certificates 76584, 76585, 76586, 83588, 83589, 83590, 83591, 83592, and 89511
Fairland Reserve Inc.
Boardman, Oregon Farm

RECEIVED
NOV 03 2016
OWRD



- Legend**
- Pump Station (No. of Flow Meters)
 - ★ Manifold
 - CID Canal
- Mainline Material, Dia.(in)**
- PVC, 4
 - PVC, 8
 - PVC, 10
 - PVC, 12
 - PVC, 15
 - PVC, 16
 - Steel, 12
 - Steel, 14
 - Steel, 16
 - Steel, 18
 - Steel, 20
 - Steel, 22
 - Steel, 24
 - Steel, 26
 - Steel, 30
 - Steel, 36
 - Steel, 42
 - Steel, 48
 - Steel, 54
 - Steel, 60
 - Steel, 72
- T&R
 - Section
 - circles
 - trees

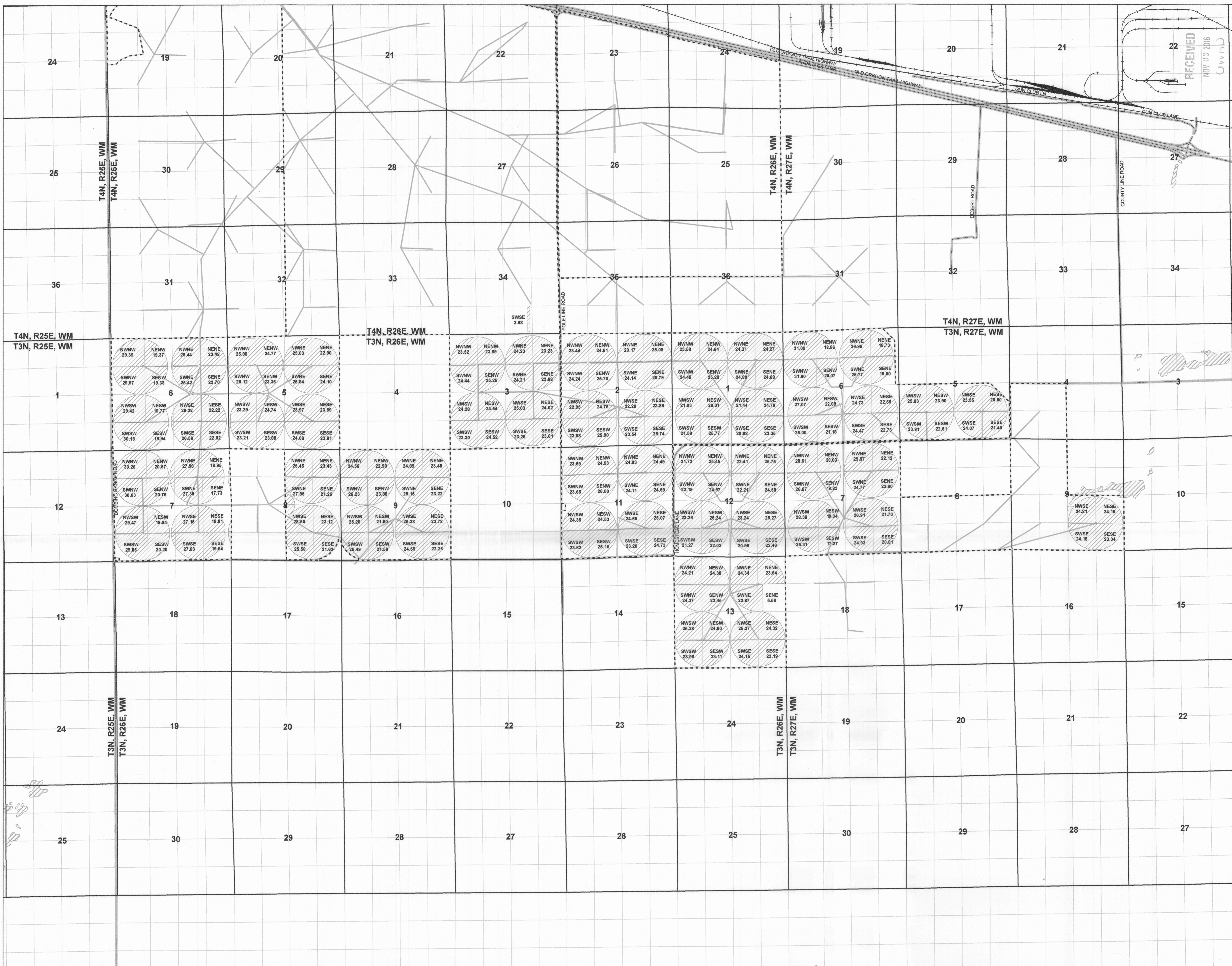
Drawn By: ADB
OR North State Plane
NAD 27 (FT)
Date 01/05/07

0 0.25 0.5
Miles
1 inch = 0.5 miles

This map was reproduced from a Water Distribution System and Flow Meter Location map submitted to OWRD by Potlatch Corporation in 2007 for the claim of Beneficial Use on Transfer T-8753, T8675, T8616, T8298, T8617 Lands subject to these transfers were served by the same distribution system as the current transfers. This map represent the existing distribution system for the drip irrigation of trees prior to any modifications to convert the system back to irrigation with center pivots.

Water Distribution System and Flow Meter Location Map
Applies to Certificates 76584, 76585, 76586, 83588, 83589, 83590, 83591, 83592, and 89511
Fairland Reserve Inc.
Boardman, Oregon Farm

RECEIVED
NOV 03 2016
Uvrb



LEGEND

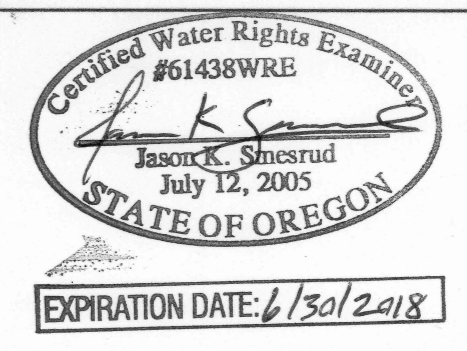
- FRI Property Boundary
- Water Bodies
- Railroads
- From Lands (Existing POU Associated with this Transfer)
- Pipelines
- Paved Roads
- PLSS Sections

SESE 30.52 Quarter Quarter Section Location and Water Right POU Acres

0 1,000 2,000 Feet
1 inch = 2,000 feet

This drawing is an exhibit for a Water Right Permanent Transfer. This map is not intended to provide legal dimensions or locations of property ownership lines. Property lines and/or other lines of occupation shown hereon are not represented by the undersigned to meet accuracy standards of Land Surveys.

CWRE: Jason Smead
Drawn By: Edward Douglas
Date: October 2016
Projection: NAD83 Oregon Statewide Lambert, International Feet



Existing Place of Use (POU) Map
Permanent Water Rights Transfer
Certificate 76586
Farmland Reserve Inc.
Boardman, Oregon Farm

T3N, R26E, WM and T3N, R27E, WM
Morrow County, Oregon

The POU consists of 8 foot wide irrigated strips located on 10 foot centers marked by the tree rows