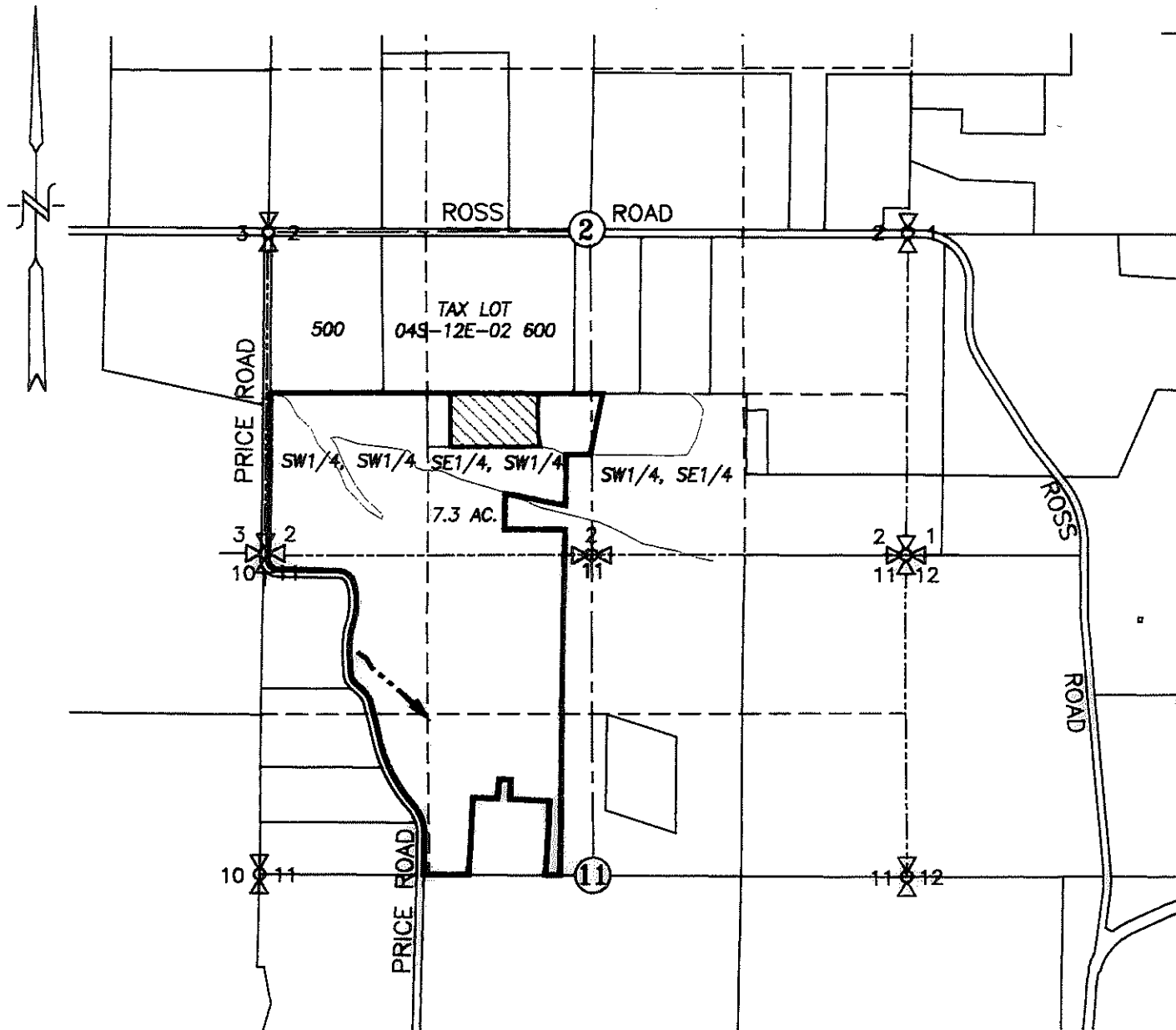




SECTION 2, TWP.4 S. RANGE 12 E. W.M.
 WASCO COUNTY, OREGON



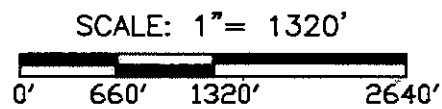
LEGEND:

-  7.3 ACRES SUPPLEMENTAL CERT. 60463 (PERMIT S-43524)
-  PINE HOLLOW CREEK

RECEIVED
 JAN 14 2022

CLAIM OF BENEFICIAL USE MAP

OWRD

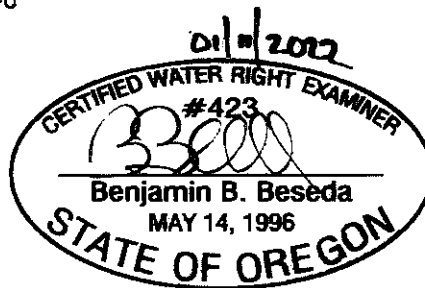


TRANSFER No. T-8080

IN THE NAME OF:

F.D.D., LLC.

DATE: OCTOBER 13, 2021



EXPIRES: 12/31/2023

BY: **TENNESON ENGINEERING CORP.**
 3775 CRATES WAY
 THE DALLES, OREGON. 97058
 PH. 541-296-9177
 FAX 541-296-6657



NOTE:

"THIS MAP IS NOT INTENDED TO PROVIDE LEGAL DIMENSIONS OR LOCATIONS OF PROPERTY OWNERSHIP LINES."

MAP 3 of 4

W.O. #15996wr