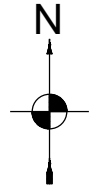


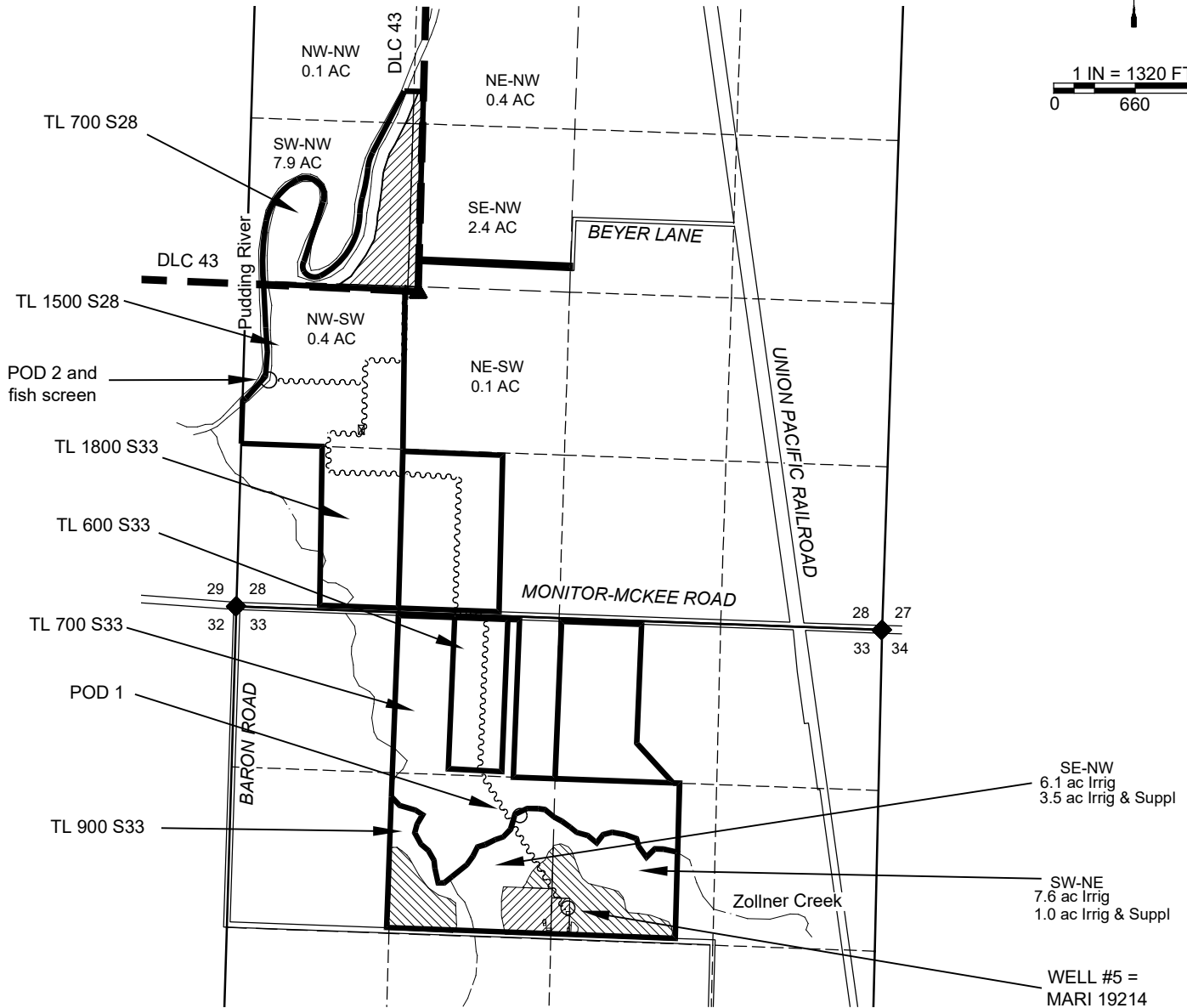
Claim of Beneficial Use

Sections 28 & 33, T5S, R1W, Marion County

Transfer T-13190



1 IN = 1320 FT
0 660 1320



LOCATIONS OF POINTS OF DIVERSION (POD) AND POINTS OF APPROPRIATION (POA):

- POD 1 IS 1695' SOUTH AND 2295' EAST FROM NW S33. (AUTHORIZED)
- POD 2 IS 1830' NORTH AND 260' EAST FROM NW S33. (ADDITIONAL)
- WELL #5 IS 2390' SOUTH & 2800' EAST FROM NW S33**. (AUTHORIZED)
- ** PER CERT. 90327

THIS MAP IS NOT INTENDED TO PROVIDE LEGAL DIMENSIONS OR LOCATIONS OF PROPERTY OWNERSHIP LINES.

LEGEND

- DONATION LAND CLAIM (DLC) CORNER
- SECTION CORNER
- POINT OF DIVERSION OR APPROPRIATION
- STREAM OR SURFACE DRAINAGE
- TAX LOT LINE
- SECTION LINE
- QUARTER-QUARTER LINE
- DLC LINES
- CONVEYANCE PIPELINES.
- TO ACRES 29565 IRRIG & 90327 SUPPL
- TO 90327 IRRIG



MAP BY:
ASPEN RURAL LAND CONSULTING
ERIC URSTADT, PE, PLS
971-250-1520
OCT 2022
FesslerFamily5A

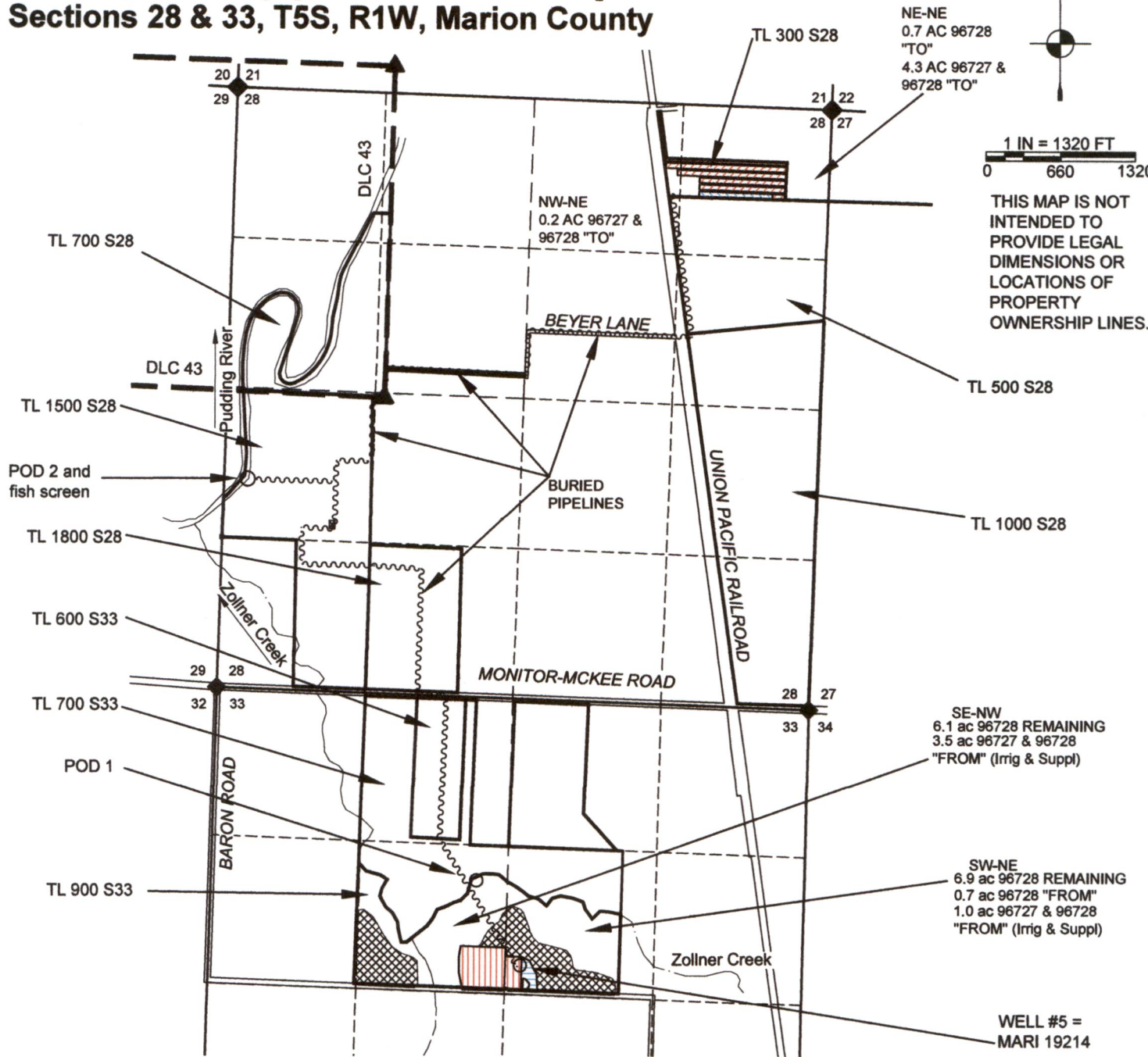
Transfer Application Map

Sections 28 & 33, T5S, R1W, Marion County



1 IN = 1320 FT
0 660 1320

THIS MAP IS NOT INTENDED TO PROVIDE LEGAL DIMENSIONS OR LOCATIONS OF PROPERTY OWNERSHIP LINES.



LOCATIONS OF POINTS OF DIVERSION (POD) AND WELL:
 POD 1 IS 1695' SOUTH AND 2295' EAST FROM NW S33.
 POD 2 IS 1830' NORTH AND 260' EAST FROM NW S33.
 WELL #5 IS 2390' SOUTH & 2800' EAST FROM NW S33**.
 ** PER CERT. 96728

RECEIVED
 JAN 03 2023

OWRD

MAP BY:
ASPEN RURAL LAND CONSULTING
 ERIC URSTADT, PE, PLS
 971-250-1520
 DEC 2022
 FesslerEbner5H



14141

LEGEND

- DONATION LAND CLAIM (DLC) CORNER
- SECTION CORNER
- POINT OF DIVERSION OR APPROPRIATION
- STREAM OR SURFACE DRAINAGE
- TAX LOT LINE
- SECTION LINE
- QUARTER-QUARTER LINE
- DLC LINES
- CONVEYANCE PIPELINES.
- "FROM" ACRES 96727 IRRIG & 96728 SUPPL
- "FROM" ACRES 96728 IRRIG
- "TO" ACRES 96727 IRRIG & 96728 SUPPL
- "TO" ACRES 96728 IRRIG
- REMAINING ACRES 96728 IRRIG