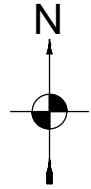


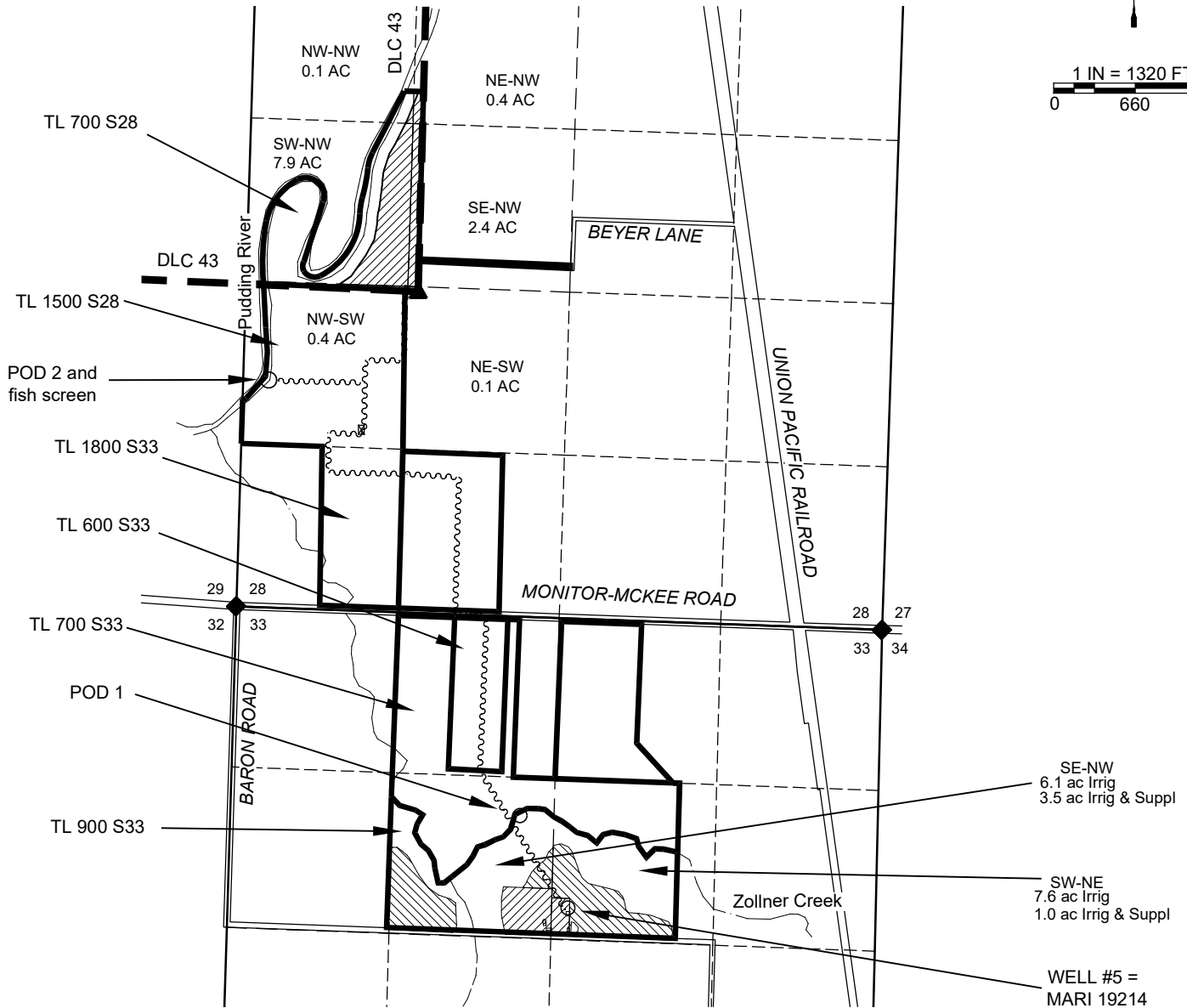
# Claim of Beneficial Use

## Sections 28 & 33, T5S, R1W, Marion County

### Transfer T-13190



1 IN = 1320 FT  
0 660 1320



**LOCATIONS OF POINTS OF DIVERSION (POD) AND POINTS OF APPROPRIATION (POA):**

POD 1 IS 1695' SOUTH AND 2295' EAST FROM NW S33. (AUTHORIZED)

POD 2 IS 1830' NORTH AND 260' EAST FROM NW S33. (ADDITIONAL)

WELL #5 IS 2390' SOUTH & 2800' EAST FROM NW S33\*\*. (AUTHORIZED)

\*\* PER CERT. 90327

THIS MAP IS NOT INTENDED TO PROVIDE LEGAL DIMENSIONS OR LOCATIONS OF PROPERTY OWNERSHIP LINES.

**LEGEND**

- DONATION LAND CLAIM (DLC) CORNER
- SECTION CORNER
- POINT OF DIVERSION OR APPROPRIATION
- STREAM OR SURFACE DRAINAGE
- TAX LOT LINE
- SECTION LINE
- QUARTER-QUARTER LINE
- DLC LINES
- CONVEYANCE PIPELINES.
- TO ACRES 29565 IRRIG & 90327 SUPPL
- TO 90327 IRRIG



MAP BY:  
**ASPEN RURAL LAND CONSULTING**  
 ERIC URSTADT, PE, PLS  
 971-250-1520  
 OCT 2022  
 FesslerFamily5A

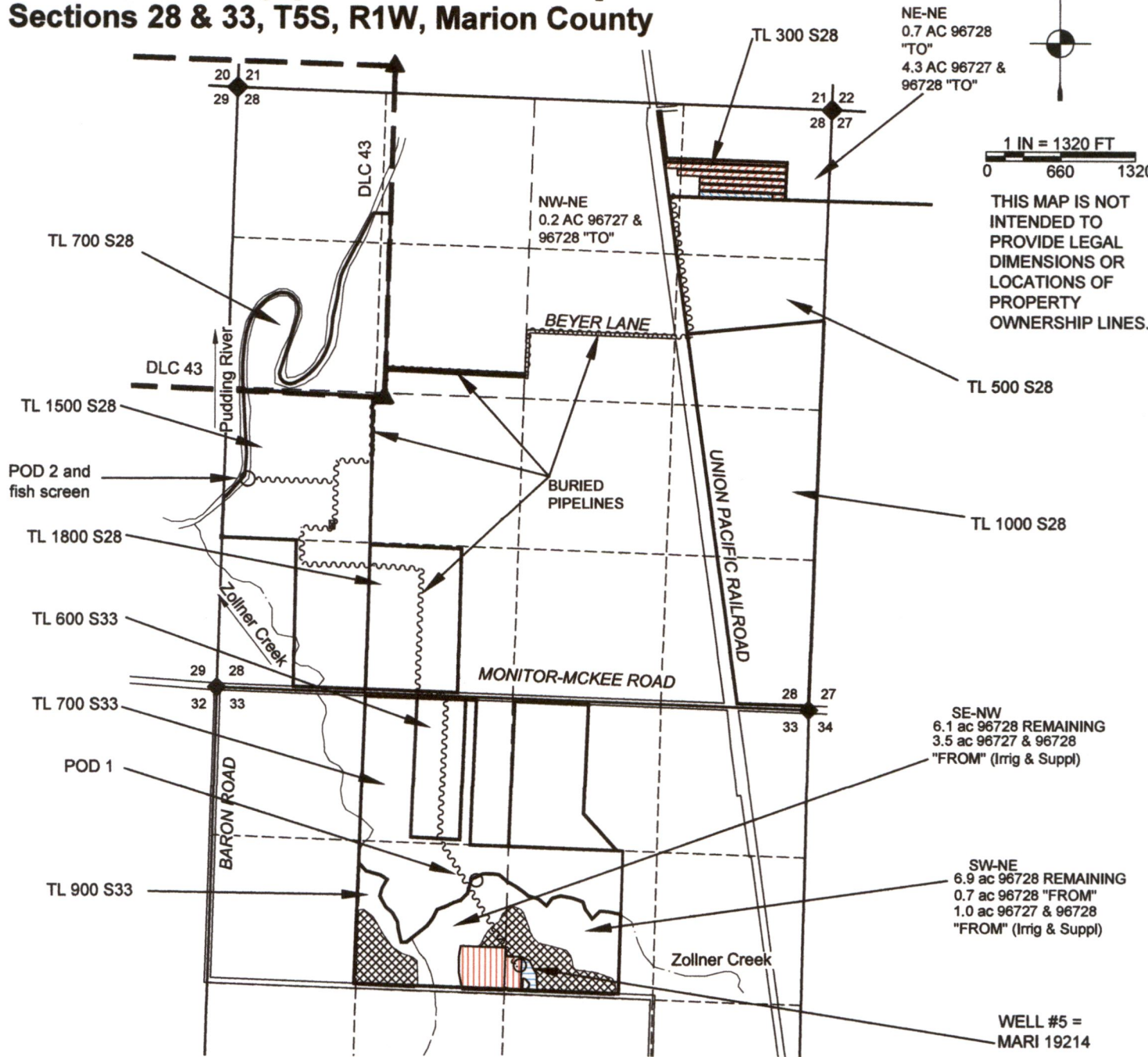
# Transfer Application Map

## Sections 28 & 33, T5S, R1W, Marion County



1 IN = 1320 FT  
0 660 1320

THIS MAP IS NOT INTENDED TO PROVIDE LEGAL DIMENSIONS OR LOCATIONS OF PROPERTY OWNERSHIP LINES.



NE-NE  
0.7 AC 96728  
"TO"  
4.3 AC 96727 &  
96728 "TO"

NW-NE  
0.2 AC 96727 &  
96728 "TO"

SE-NW  
6.1 ac 96728 REMAINING  
3.5 ac 96727 & 96728  
"FROM" (Irrig & Suppl)

SW-NE  
6.9 ac 96728 REMAINING  
0.7 ac 96728 "FROM"  
1.0 ac 96727 & 96728  
"FROM" (Irrig & Suppl)

WELL #5 =  
MARI 19214

**LOCATIONS OF POINTS OF DIVERSION (POD) AND WELL:**  
 POD 1 IS 1695' SOUTH AND 2295' EAST FROM NW S33.  
 POD 2 IS 1830' NORTH AND 260' EAST FROM NW S33.  
 WELL #5 IS 2390' SOUTH & 2800' EAST FROM NW S33\*\*.  
 \*\* PER CERT. 96728

RECEIVED  
JAN 03 2023

OWRD

MAP BY:  
**ASPEN RURAL LAND CONSULTING**  
ERIC URSTADT, PE, PLS  
971-250-1520  
DEC 2022  
FesslerEbner5H



14141

**LEGEND**

- DONATION LAND CLAIM (DLC) CORNER
- SECTION CORNER
- POINT OF DIVERSION OR APPROPRIATION
- STREAM OR SURFACE DRAINAGE
- TAX LOT LINE
- SECTION LINE
- QUARTER-QUARTER LINE
- DLC LINES
- CONVEYANCE PIPELINES.
- "FROM" ACRES 96727 IRRIG & 96728 SUPPL
- "FROM" ACRES 96728 IRRIG
- "TO" ACRES 96727 IRRIG & 96728 SUPPL
- "TO" ACRES 96728 IRRIG
- REMAINING ACRES 96728 IRRIG