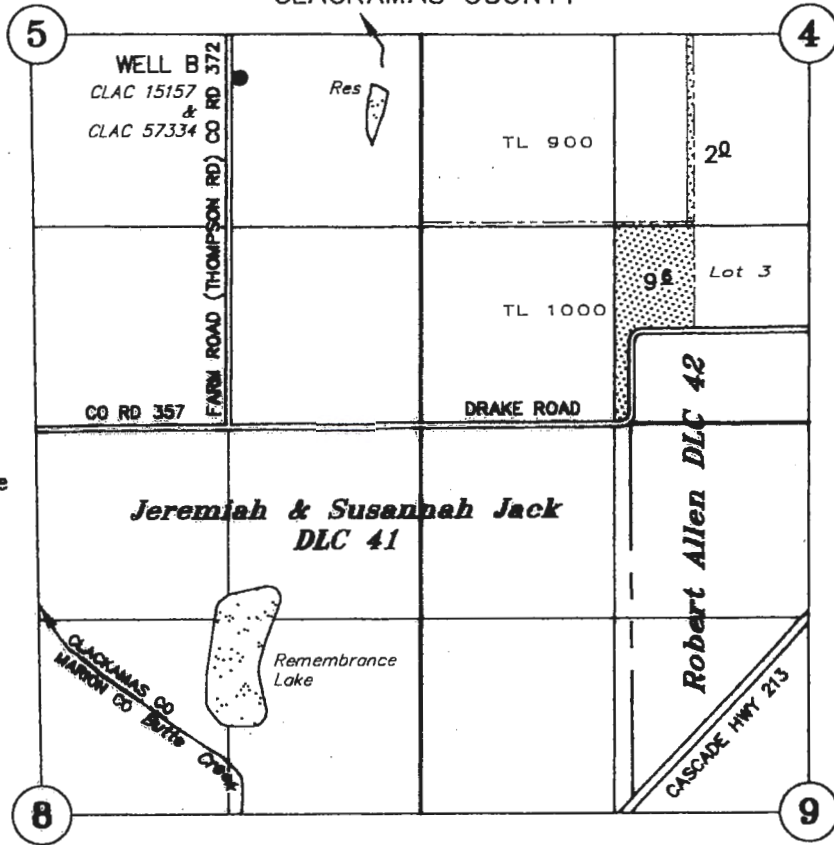


T6S R1E, WM

CLACKAMAS COUNTY



TAX LOT:
6S 1E 4 900
1000

----- Tax Lot Line

WELL B: 320' S & 1300' W OF E 1/4 COR SEC 5

 PERMIT G-3394, PRIORITY DATE 8/8/1966, A WELL (WELL B), PRIMARY

CLAIM OF BENEFICIAL USE

PLACE OF USE ONLY
UNDER

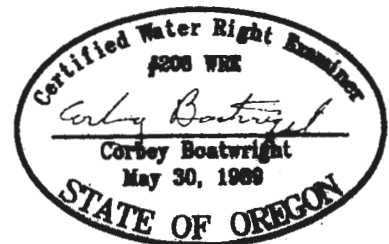
Transfer No. T-10705

IN THE NAME OF

Phyllis Schneider Irrevocable Trust, Victor A. Schneider, Trustee
David A. Schneider Supplemental Needs Trust, Victor A. Schneider, Trustee
Victor A. Schneider Living Trust, Victor A. Schneider, Trustee
Irma F. Schneider Living Trust, Irma F. Schneider, Trustee
Schneider Farms, Inc.

August 23, 2018

SCALE: 1" = 1320'



NOTE: This map is not intended to provide legal dimensions or locations of property ownership lines.

RENEWAL DATE: DECEMBER 31, 2021