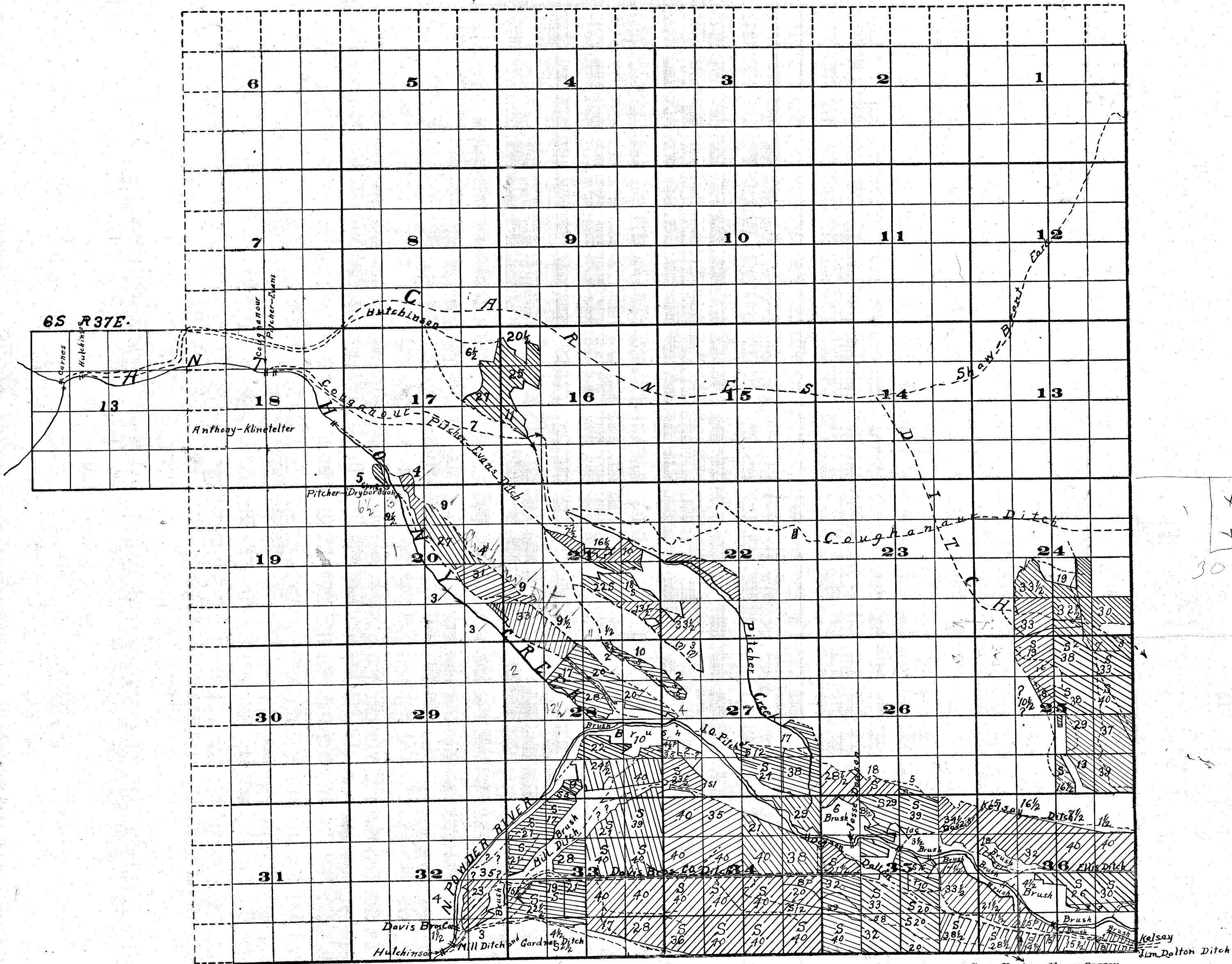


Township 6S, Range 38E



FROM OFFICE OF THE STATE ENGINEER, SALEM, OREGON

Survey By Rhea Luper June-July 1910

Scale of Feet.

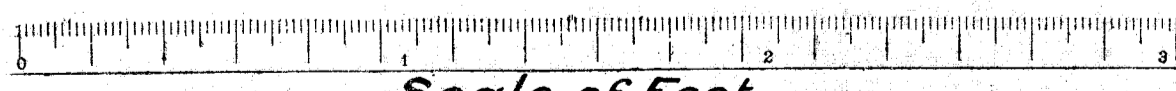
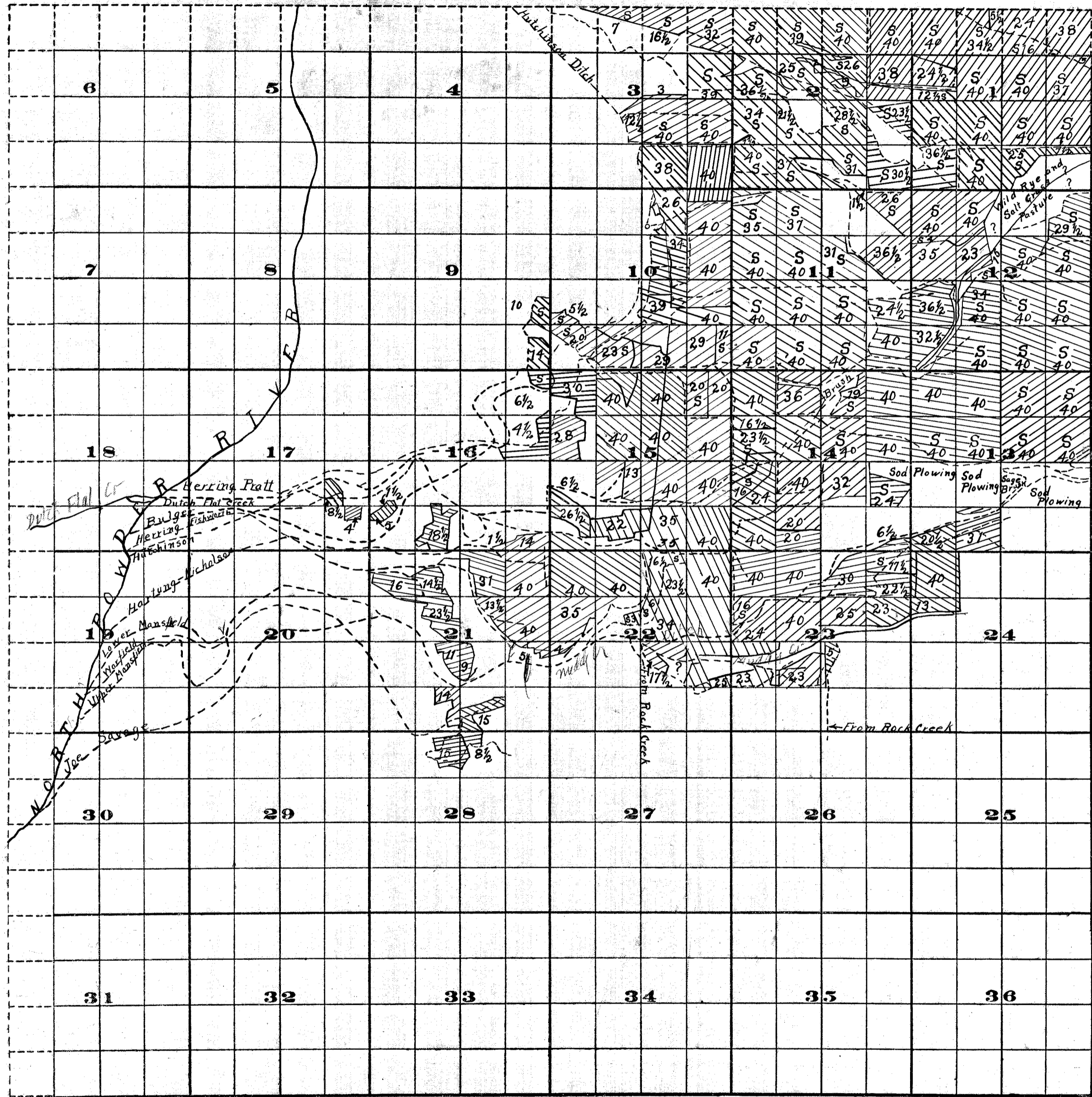
North Powder River Adjudication

John H. Lewis State Engineer

Examined Oct. 3<sup>rd</sup> 1910

3020 ac.  
57 1/2 mi.

Township 7S, Range 38E



FROM OFFICE OF THE STATE ENGINEER, MALEM, OREGON  
 Survey By Rhea Luper July-Aug 1910

John H. Lewis State Engineer

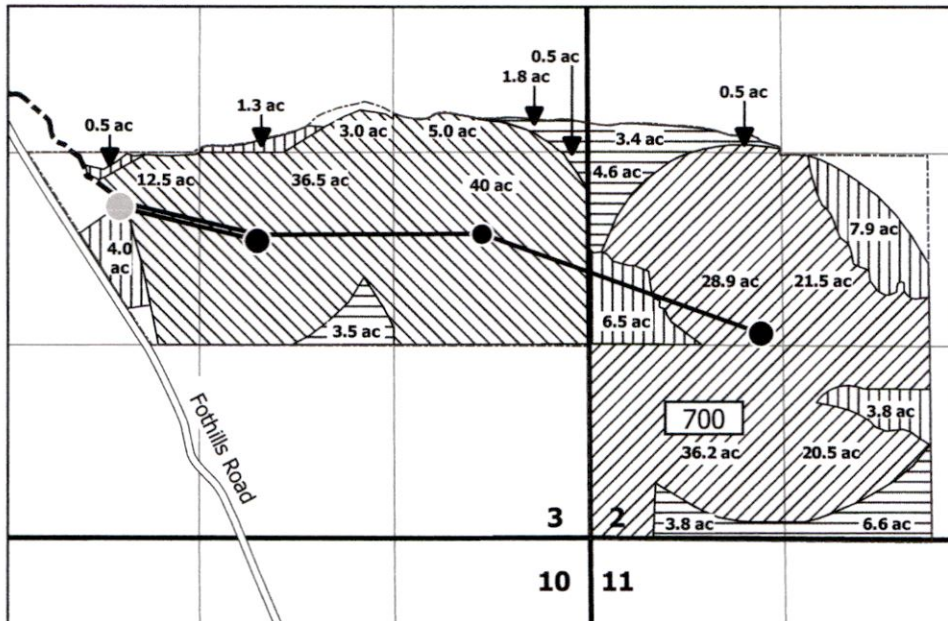
North Powder River Adjudication

Examined Oct 3<sup>rd</sup> 1910

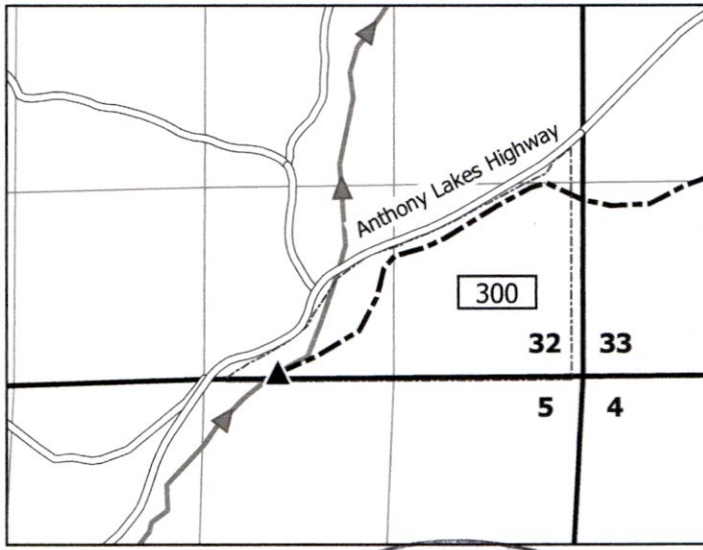
5211a  
 52 1/4 mi

Property: T7S R40E WM

RECEIVED  
 JAN 27 2021  
 OWRD

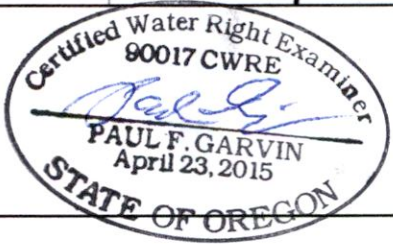


POD: T6S R38E WM



**LEGEND**

- "From" Lands
- "To" Lands
- Certificate 83781
- Certificate 83782
- Baker County Taxlot Boundary 100
- Center Pivot Pad
- Bulge in the System
- Mainline
- Hitchison Hillside Ditch
- Point of Diversion



**Garvin Hydrogeo LLC**

**Permanent Water Right Transfer Application Map - Certificates 83781 and 83782**

Prepared on behalf of Jason Bingham

1 inch = 1,320 feet

N ↑

Drawn by: Paul F. Garvin, R.G. C.W.R.E.  
 Date: 12/31/20

Notes:  
 POD located 2670' S & 2380' W from the E 1/4 corner of Sec 32  
 This map is not intended to provide legal dimensions or locations of property ownership lines.

10604