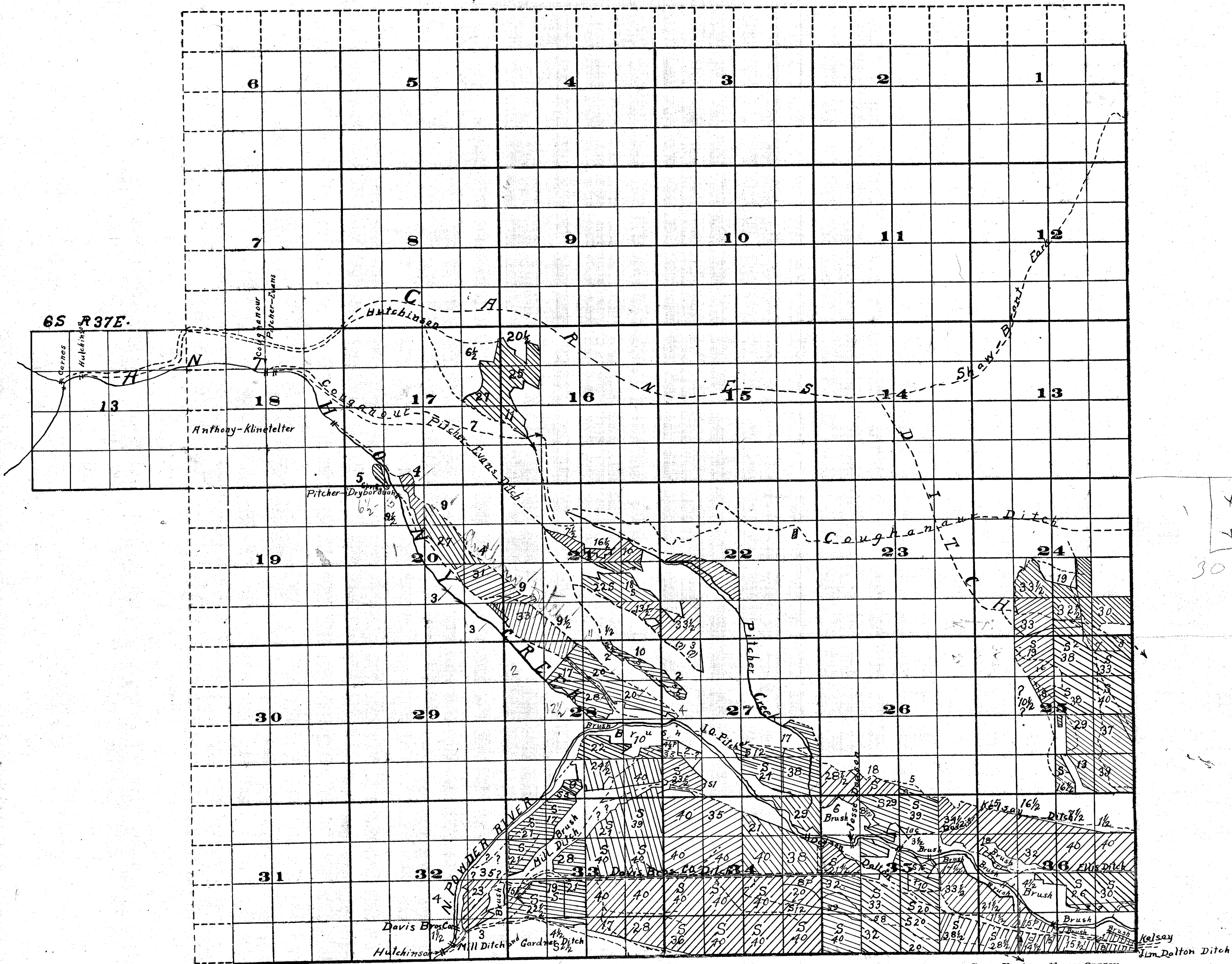


Township 6S, Range 38E



FROM OFFICE OF THE STATE ENGINEER, SALEM, OREGON

Survey By Rhea Luper June-July 1910

Scale of Feet.

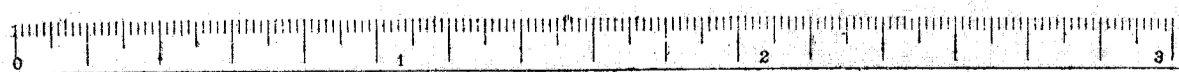
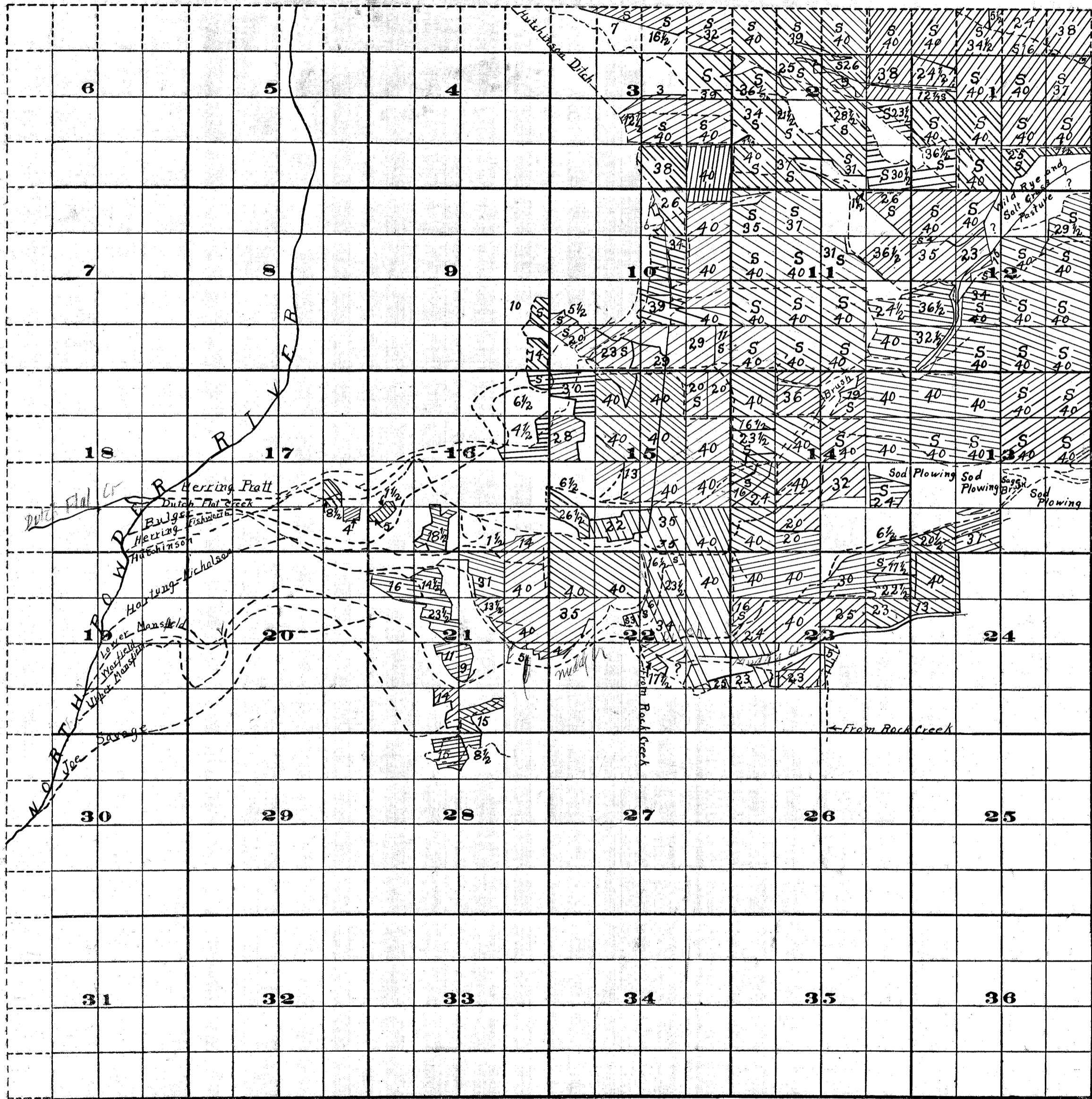
North Powder River Adjudication

John H. Lewis State Engineer

Examined Oct. 3rd 1910

3020 ac.
57 1/2 mi.

Township 7S, Range 38E



FROM OFFICE OF THE STATE ENGINEER, MALEM, OREGON
 Survey By Rhea Luper July-Aug 1910

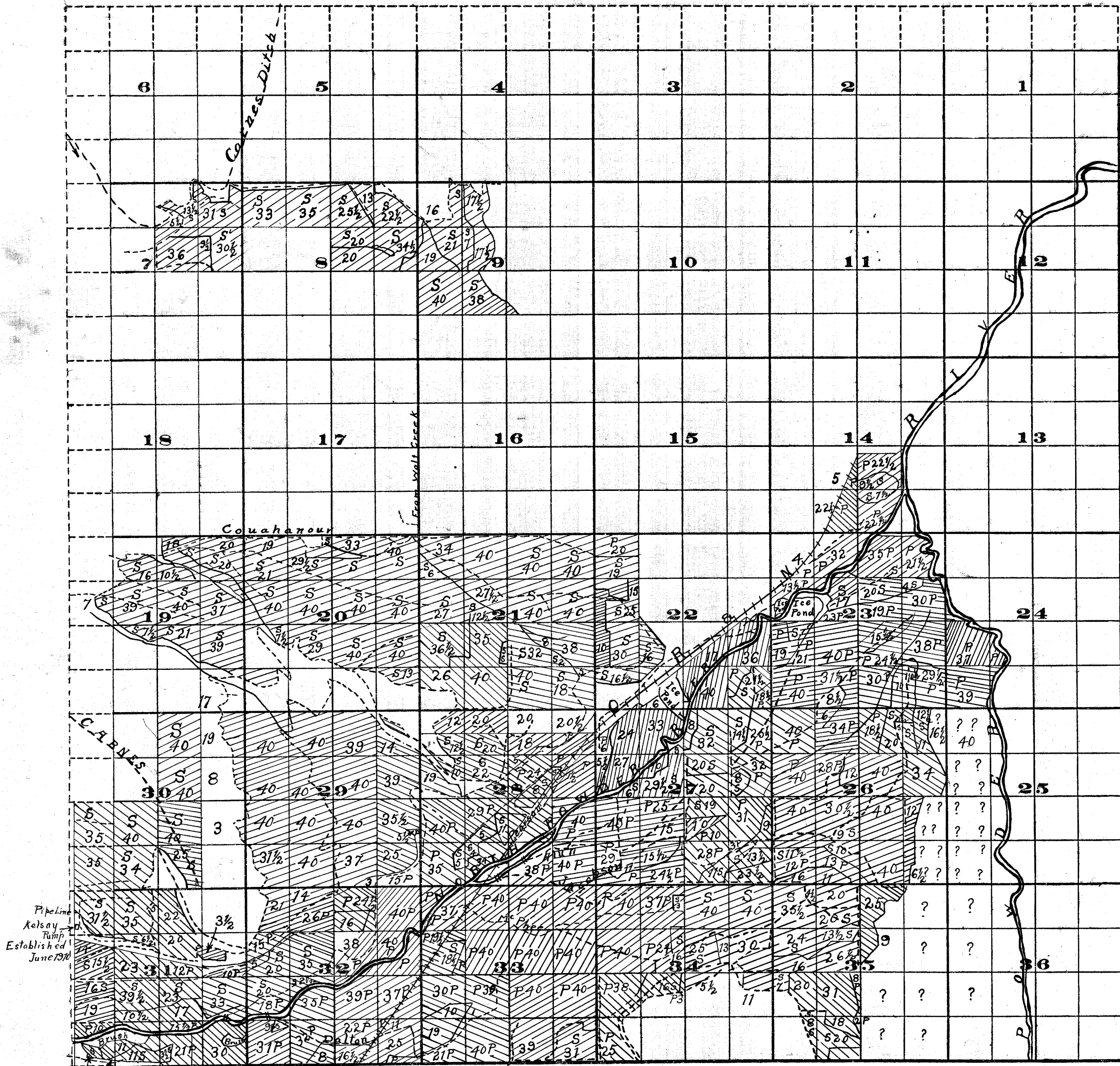
John H. Lewis State Engineer

North Powder River Adjudication

Examined Oct 3rd 1910

5211a
 52 1/4 mi

Township 6S, Range 39E



Pipeline
Kelsay
Pump
Established
June 1910

FROM OFFICE OF THE STATE ENGINEER, SALEM, OREGON

Scale of Feet.

Survey By Rhea Luper June 1910

John H. Lewis State Engineer

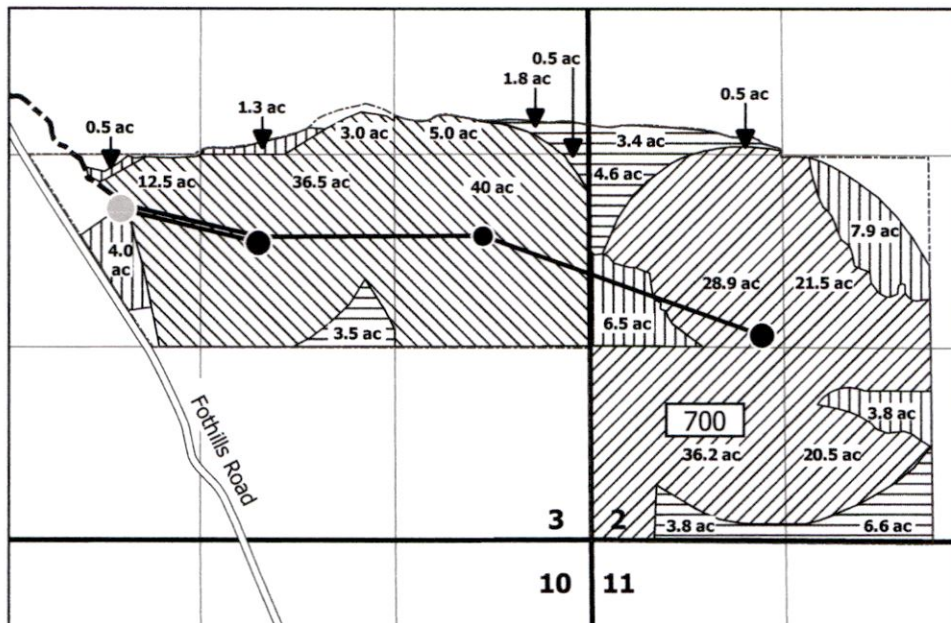
North Powder River Adjudication

Examined Oct. 3rd 1910

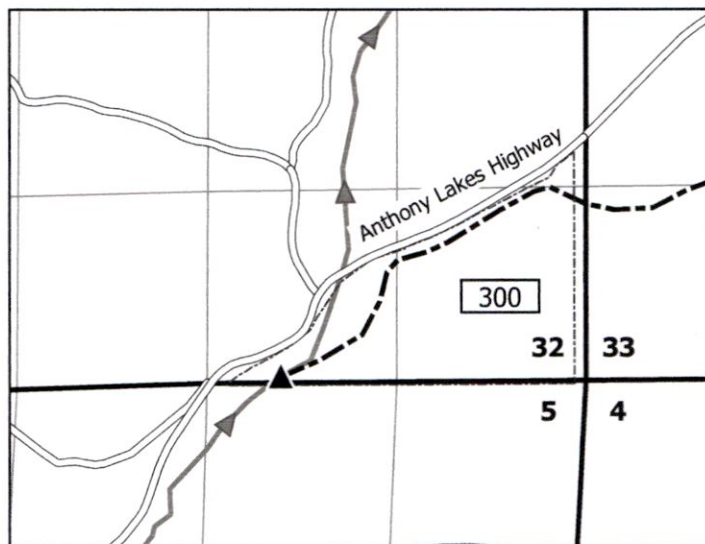
5146.5 ac.
56 mm

Property: T7S R40E WM

RECEIVED
JAN 27 2021
OWRD

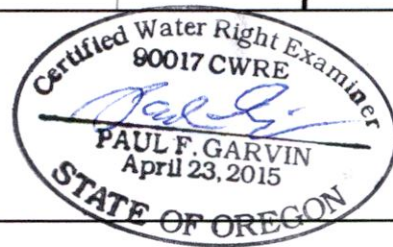


POD: T6S R38E WM



LEGEND

- "From" Lands
- "To" Lands
- Certificate 83781
- Certificate 83782
- Baker County Taxlot Boundary 100
- Center Pivot Pad
- Bulge in the System
- Mainline
- Hitchison Hillside Ditch
- Point of Diversion



Garvin
Hydrogeo
LLC

**Permanent Water Right Transfer
Application Map - Certificates
83781 and 83782**

Prepared on behalf of Jason Bingham

1 inch = 1,320 feet



Notes:

POD located 2670' S & 2380' W from the E 1/4 corner of Sec 32

This map is not intended to provide legal dimensions or locations of property ownership lines.

10604