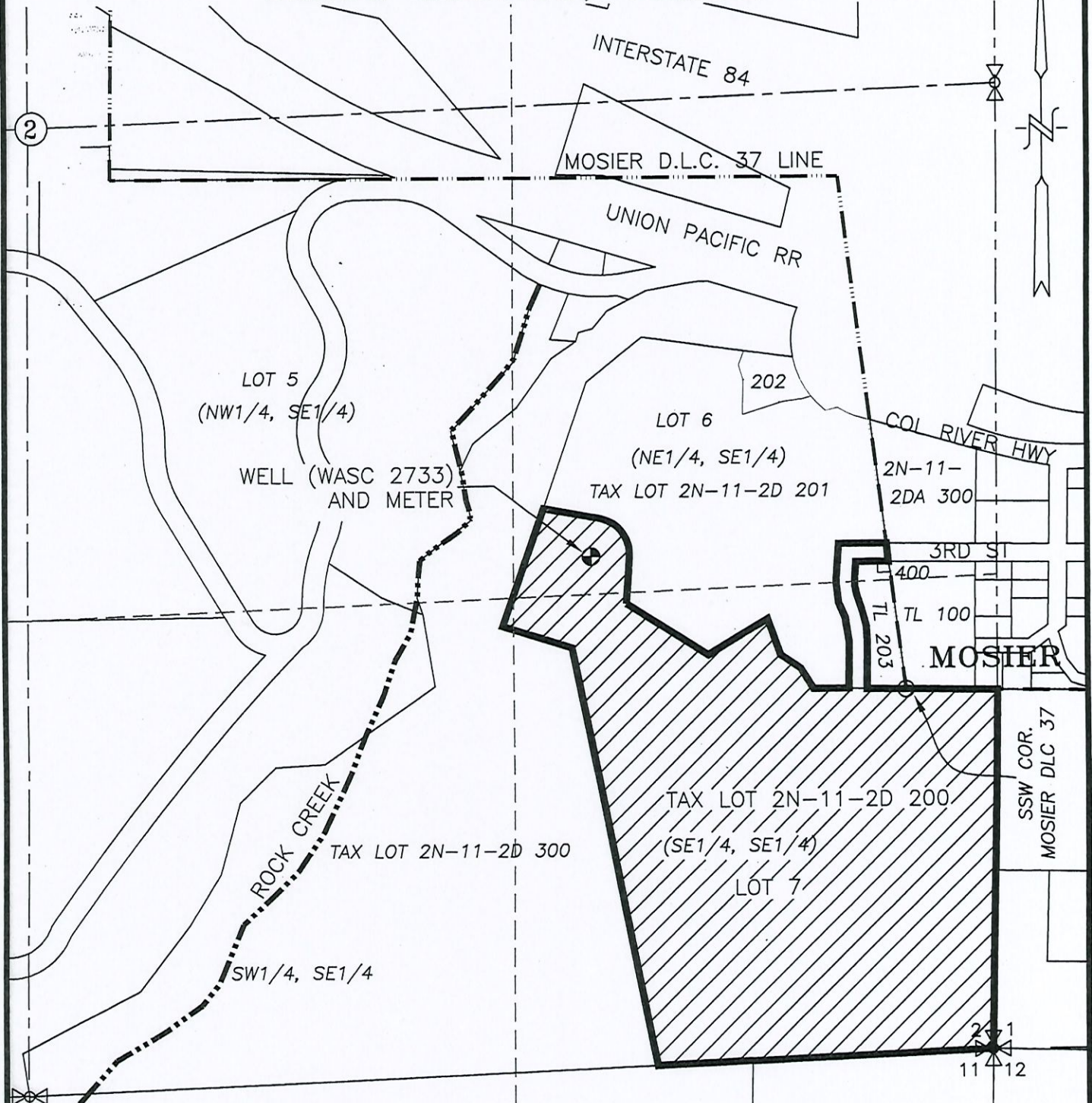



0547

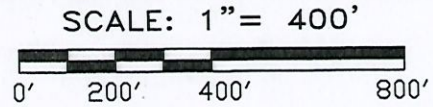
SECTION 2, TWP.2 N. RANGE 11 E. W.M.
WASCO COUNTY, OREGON



LEGEND:

- ⊕ WELL (WASC 2733) 1355' N. & 1095' W. OF SE COR. SECTION 2
-  INDUSTRIAL USE

CLAIM OF BENEFICIAL USE MAP



COBW MAP # 0547 JHLS

APPLICATION No. G-13322

PERMIT No. G-12690

IN THE NAME OF:
HOOD RIVER SAND AND GRAVEL

DATE: OCTOBER 13, 2010



EXPIRES: 06/30/2012

NOTE:
"THIS MAP IS NOT INTENDED TO PROVIDE DIMENSIONS OR LOCATIONS OF PROPERTY OWNERSHIP LINES."

BY: **TENNESON ENGINEERING CORP.**
3313 W. 2ND. STREET, SUITE 100
THE DALLES, OREGON. 97058
PH. 541-296-9177
FAX 541-296-6657



W.O. #13201wr

RECEIVED
OCT 28 2010