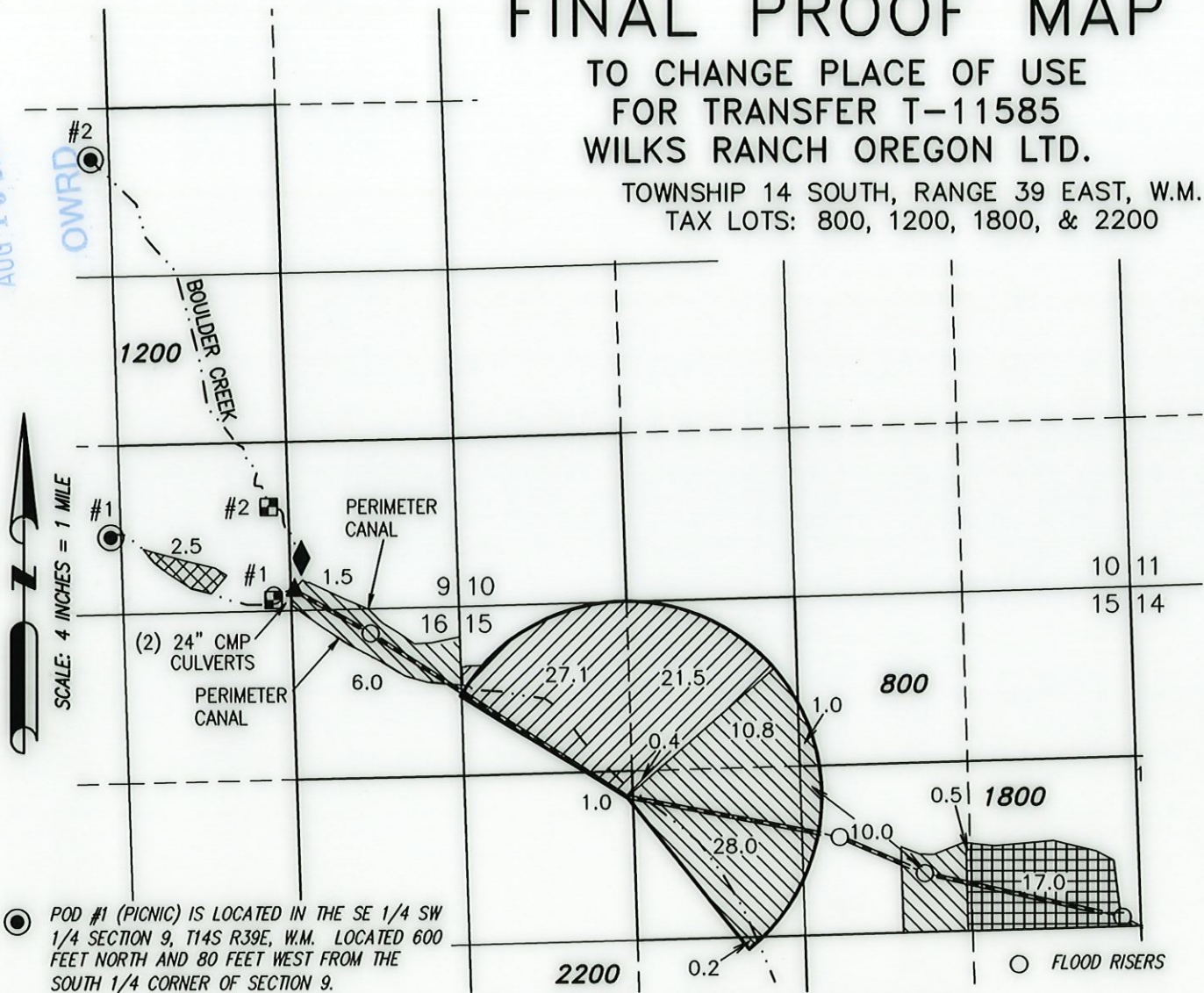


FINAL PROOF MAP

TO CHANGE PLACE OF USE
FOR TRANSFER T-11585
WILKS RANCH OREGON LTD.





TOWNSHIP 14 SOUTH, RANGE 39 EAST, W.M.
TAX LOTS: 800, 1200, 1800, & 2200

RECEIVED
AUG 15 2018



○ POD #1 (PICNIC) IS LOCATED IN THE SE 1/4 SW 1/4 SECTION 9, T14S R39E, W.M. LOCATED 600 FEET NORTH AND 80 FEET WEST FROM THE SOUTH 1/4 CORNER OF SECTION 9.

○ POD #2 (JOHNSON) IS LOCATED IN THE SE 1/4 NW 1/4 SECTION 9, T14S R39E, W.M. LOCATED 3545 FEET NORTH AND 145 FEET WEST FROM THE SOUTH 1/4 CORNER OF SECTION 9.

-  50.0 ACRES PRIMARY RIGHTS FROM CERTIFICATE #1550 (1881), AS SHOWN.
-  57.5 ACRES PRIMARY RIGHTS FROM CERTIFICATE #1550 (1890), AS SHOWN.
-  2.5 ACRES PRIMARY RIGHTS FROM CERTIFICATE #1550 (1905), AS SHOWN.
-  17.5 ACRES PRIMARY RIGHTS FROM CERTIFICATE #1550 (1907), AS SHOWN.

■ FLOW METERS - WEIR BOXES W/ 1.25' X 2' OPENINGS
#1 LOCATED 85' NORTH & 1170' EAST FROM S 1/4 COR
#2 LOCATED 810' NORTH & 1155' EAST FROM S 1/4 COR

◆ SYSTEM BULGE
LOCATED IN THE SE 1/4 SE 1/4 SECTION 9, T14S, R39E, W.M.
0.85 AF 7 FT DEEP PARTIALLY DUGOUT POND
24" CMP INLET NW END
(2) 12" CMP OUTLET TO N & S CANALS

▲ MOBILE PUMP FROM POND/CANAL TO PIVOT

— — — — —
STREAM OR CANAL
— — — — —
BURIED PRESSURIZED PIPE

THIS MAP IS FOR THE PURPOSE OF LOCATING A WATER RIGHT ONLY AND HAS NO INTENT TO PROVIDE LEGAL DIMENSIONS OR THE LOCATION OF PROPERTY LINES.



RENEWAL DATE: 12/31/2018

PREPARED FOR:

WILKS RANCH OREGON LTD.
4945 WILLOW CREEK ROAD
IRONSIDE, OR 97908

PREPARED BY:

ALL POINTS ENGINEERING AND SURVEYING, INC.
P.O. BOX 767
(541) 548-5833
TERREBONNE, OR 97760
www.APEandS.com