

FINAL PROOF MAP

TO CHANGE POINT OF DIVERSION & PLACE OF USE
FOR TRANSFER T-11585
WILKS RANCH OREGON LTD.

TOWNSHIP 14 SOUTH, RANGE 39 EAST, W.M.
TAX LOT: 300 & 2000

RECEIVED
AUG 15 2018
OWRD

--- STREAM
--- BURIED IRRIGATION PIPE

◆ SYSTEM BULGE (POND A)
LOCATED IN THE SE 1/4 NW 1/4 SECTION 14, T14S, R39E, W.M.
0.85 AF 7 FT DEEP DUGOUT POND
24" CMP INLET NW END
24" CMP OVERFLOW TO E'LY POND
24" CMP OUTLET TO E'LY POND

◆ SYSTEM BULGE (POND B)
LOCATED IN THE SE 1/4 SE 1/4 SECTION 9, T14S, R39E, W.M.
0.85 AF 7 FT DEEP PARTIALLY DUGOUT POND
24" CMP INLET NW END
(2) 12" CMP OUTLET TO N & S CANALS

80.0 ACRES PRIMARY RIGHTS FROM
CERTIFICATE #44016 (1874) AS SHOWN.

75.0 ACRES PRIMARY RIGHTS FROM
CERTIFICATE #44016 (1877) AS SHOWN.

153.0 ACRES PRIMARY RIGHTS FROM
CERTIFICATE #44016 (1879) AS SHOWN.

○ FLOOD RISERS

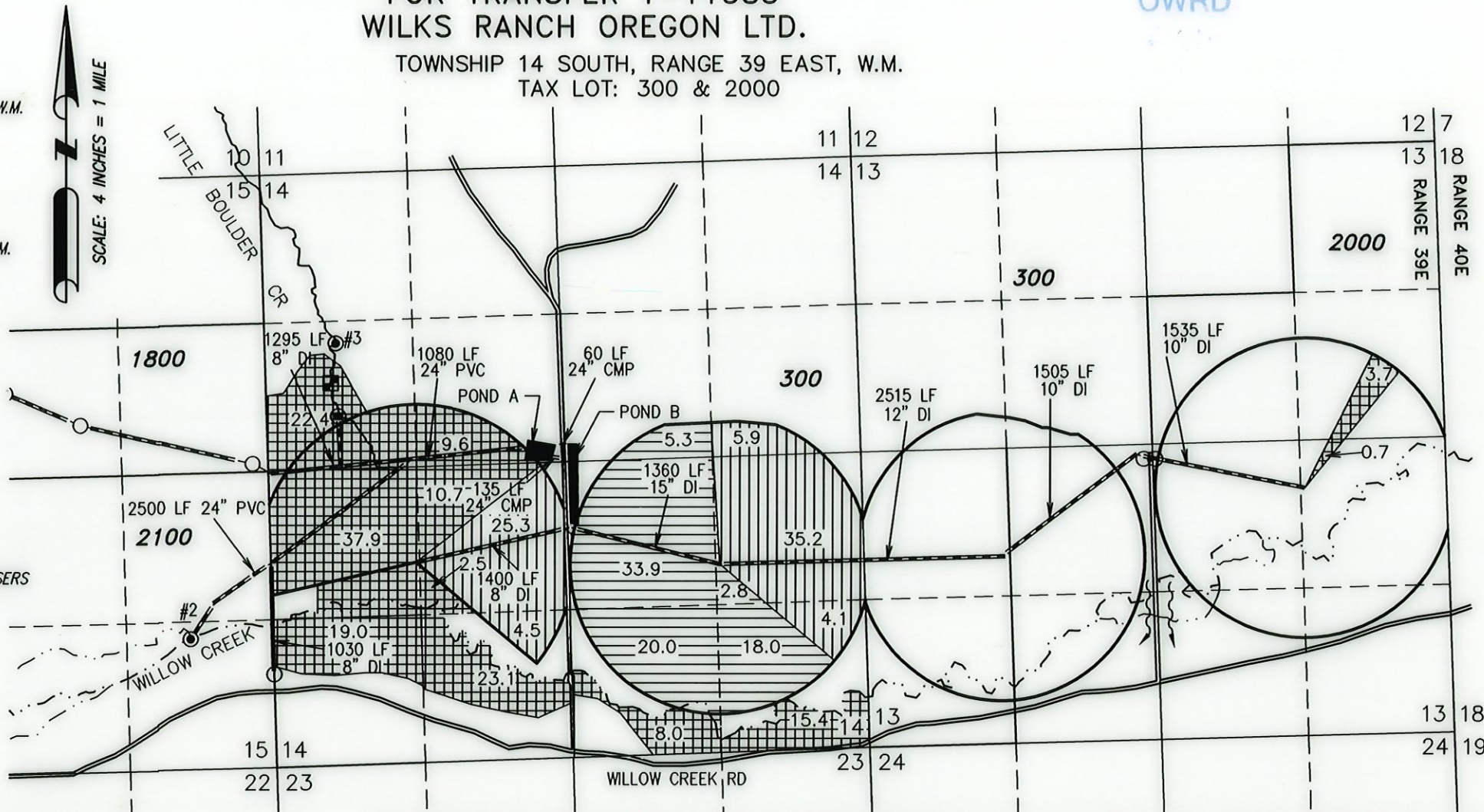
● #3 POD ;MILL' IS LOCATED IN THE SW 1/4 NW
1/4 SECTION 14, T14S R39E, W.M. LOCATED 1500
FEET SOUTH AND 600 FEET EAST FROM THE
NORTHWEST CORNER OF SECTION 14.

■ FLOW METER - WEIR BOX W/ 1.25' X 2' OPENING
LOCATED 350' SOUTH FROM POD #3



RENEWAL DATE: 12/31/2018

THIS MAP IS FOR THE PURPOSE OF LOCATING A WATER
RIGHT ONLY AND HAS NO INTENT TO PROVIDE LEGAL
DIMENSIONS OR THE LOCATION OF PROPERTY LINES.



● #2 POD IS LOCATED IN THE SE 1/4 SE 1/4
SECTION 15, T14S R39E, W.M. LOCATED 1210
FEET NORTH AND 680 FEET WEST FROM THE
SOUTHEAST CORNER OF SECTION 15.

FLOW METER - SQUARE-NOTCHED WEIR W/ 0.5' X 2'
OPENING LOCATED 2' SOUTH FROM POD #2

PREPARED FOR:

WILKS RANCH OREGON LTD.
4945 WILLOW CREEK ROAD
IRONSIDE, OR 97908

PREPARED BY:



ALL POINTS ENGINEERING AND SURVEYING, INC.
P.O. BOX 767
(541) 548-5833
TERREBONNE, OR 97760
www.APEandS.com