

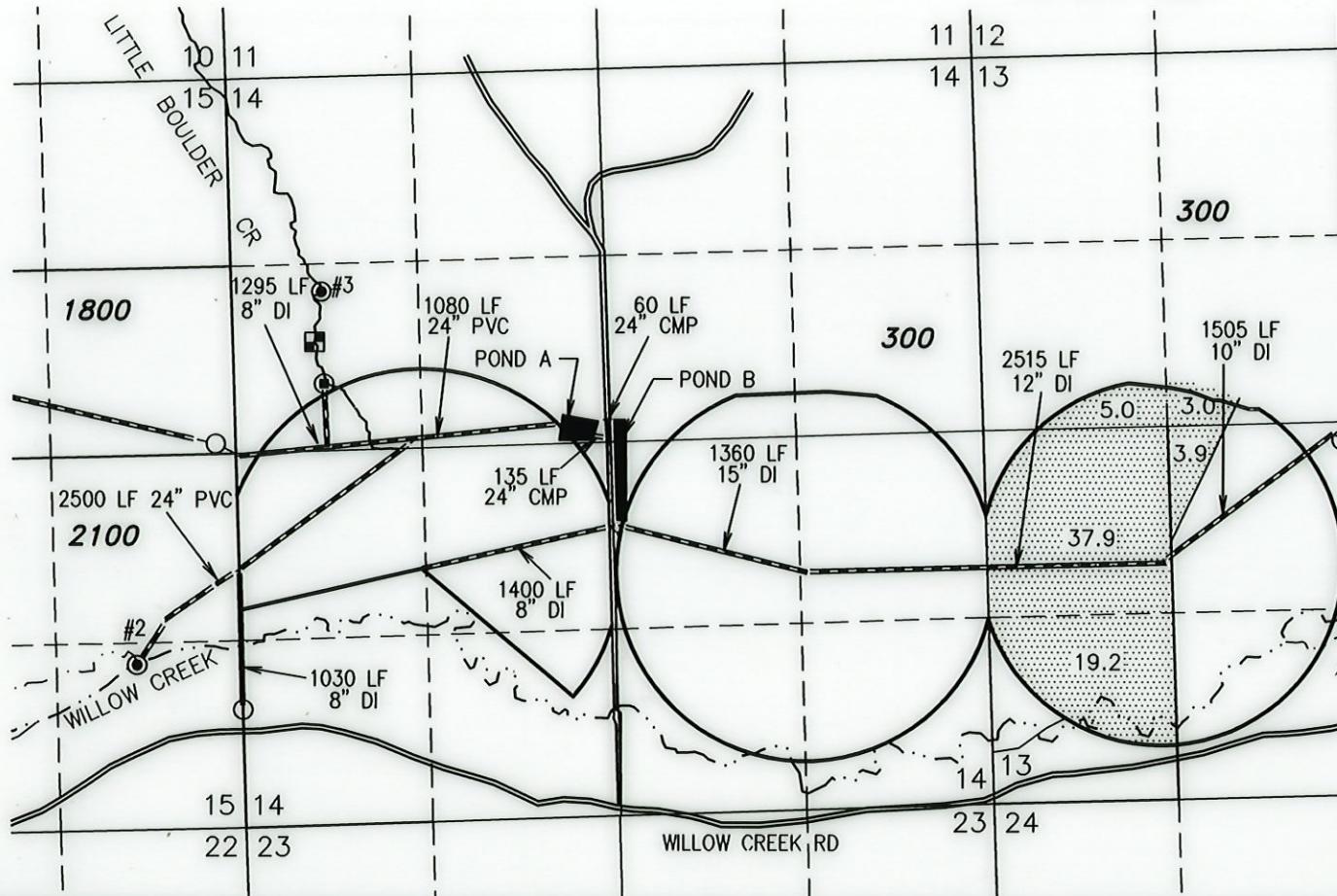
# FINAL PROOF MAP

TO CHANGE POINT OF DIVERSION & PLACE OF USE  
 FOR TRANSFER T-11585  
 WILKS RANCH OREGON LTD.  
 TOWNSHIP 14 SOUTH, RANGE 39 EAST, W.M.  
 TAX LOT: 300

RECEIVED

AUG 15 2018

OWRD



⊙ #2 POD IS LOCATED IN THE SE 1/4 SE 1/4 SECTION 15, T14S R39E, W.M. LOCATED 1210 FEET NORTH AND 680 FEET WEST FROM THE SOUTHEAST CORNER OF SECTION 15. FLOW METER - SQUARE-NOTCHED WEIR W/ 0.5' X 2' OPENING #2 LOCATED 2' SOUTH FROM POD #2

NOT CONNECTED TO CLOSED SYSTEM

⊙ POD #3 'MILL' IS LOCATED IN THE SW 1/4 NW 1/4 SECTION 14, T14S R39E, W.M. LOCATED 1500 FEET SOUTH AND 600 FEET EAST FROM THE NORTHWEST CORNER OF SECTION 14.


⊠ FLOW METER - WEIR BOX W/ 1.25' X 2' OPENING LOCATED 350' SOUTH FROM POD #3

◆ SYSTEM BULGE (POND A)  
 LOCATED IN THE SE 1/4 NW 1/4 SECTION 14, T14S, R39E, W.M.  
 0.85 AF 7 FT DEEP DUGOUT POND  
 24" CMP INLET NW END  
 24" CMP OVERFLOW TO E'LY POND  
 24" CMP OUTLET TO E'LY POND

◆ SYSTEM BULGE (POND B)  
 LOCATED IN THE SE 1/4 SE 1/4 SECTION 9, T14S, R39E, W.M.  
 0.85 AF 7 FT DEEP PARTIALLY DUGOUT POND  
 24" CMP INLET NW END  
 (2) 12" CMP OUTLET TO N & S CANALS

▨ 69.0 ACRES PRIMARY RIGHTS FROM CERTIFICATE #44017 (1885) AS SHOWN.

--- STREAM  
 - - - - - BURIED IRRIGATION PIPE

|   |  |
|---|--|
| <p>PREPARED FOR:</p> <p>WILKS RANCH OREGON LTD.<br/>                 4945 WILLOW CREEK ROAD<br/>                 IRONSIDE, OR 97908</p> | <p>PREPARED BY:</p>  <p>ALL POINTS ENGINEERING AND SURVEYING, INC.<br/>                 P.O. BOX 767 TERREBONNE, OR 97760<br/>                 (541) 548-5833 www.APEandS.com</p> |
|---|--|



RENEWAL DATE: 12/31/2018

THIS MAP IS FOR THE PURPOSE OF LOCATING A WATER RIGHT ONLY AND HAS NO INTENT TO PROVIDE LEGAL DIMENSIONS OR THE LOCATION OF PROPERTY LINES.