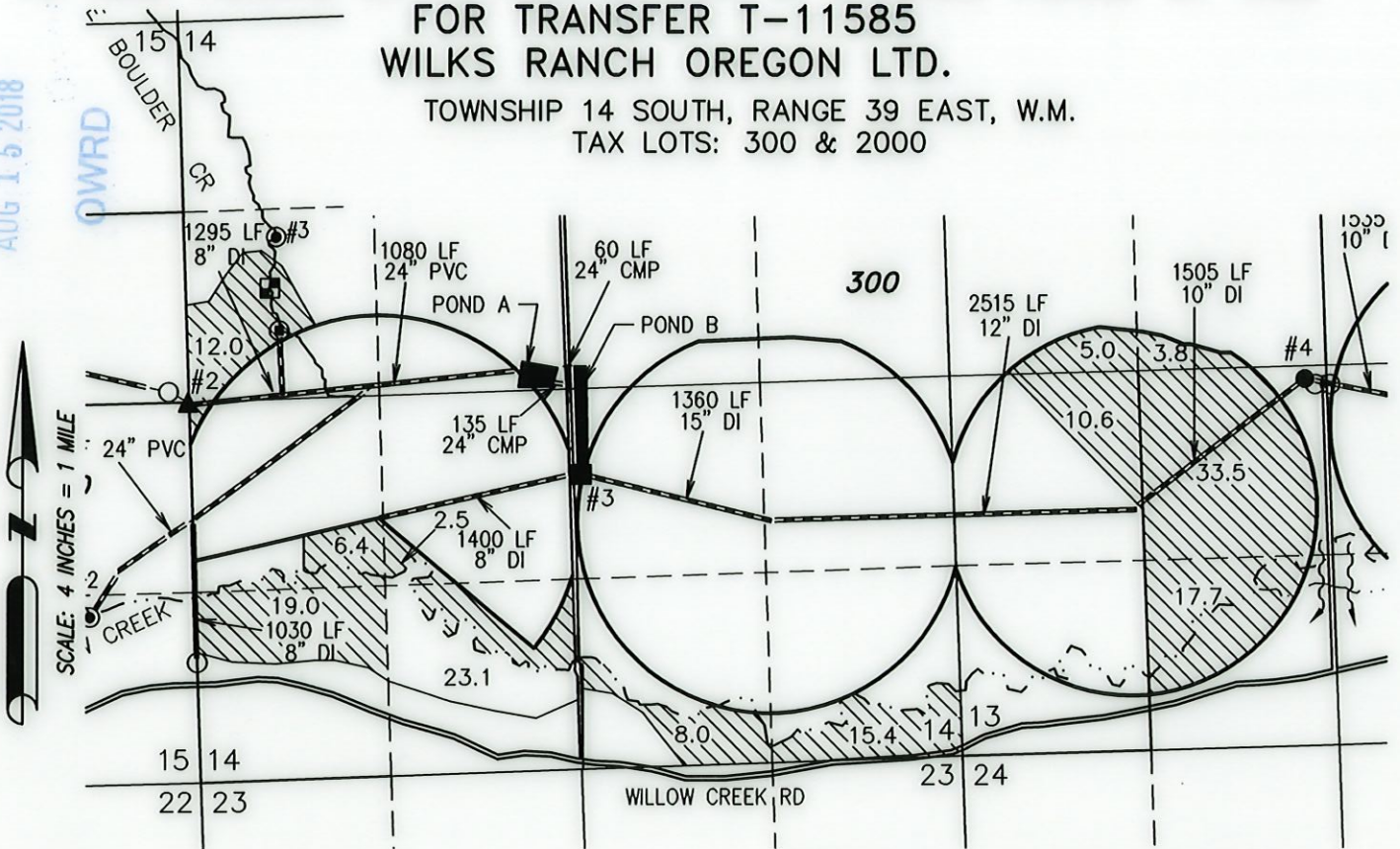


# FINAL PROOF MAP

TO ADD POINTS OF APPROPRIATION & CHANGE PLACE OF USE  
FOR TRANSFER T-11585  
WILKS RANCH OREGON LTD.

TOWNSHIP 14 SOUTH, RANGE 39 EAST, W.M.  
TAX LOTS: 300 & 2000

RECEIVED  
AUG 15 2018



○ FLOOD RISERS      ● HEADGATE

- ▲ POA 2 MALH 2932 "GINNY" IS LOCATED IN THE NW 1/4 SW 1/4 SECTION 14, T14S R39E, W.M. LOCATED 2620 FEET NORTH AND 0 FEET EAST FROM THE SOUTHWEST CORNER OF SECTION 14.
- POA 4 MALH 15 & 2510 "HOWARD" IS LOCATED IN THE NE 1/4 SW 1/4 SECTION 13, T14S R39E, W.M. LOCATED 2540 FEET NORTH AND 2460 FEET EAST FROM THE SOUTHWEST CORNER OF SECTION 13.
- POA 3 "LANE" IS LOCATED IN THE NW 1/4 SE 1/4 SECTION 14, T14S R39E, W.M. LOCATED 2040 FEET NORTH AND 2580 FEET WEST FROM THE SOUTHWEST CORNER OF SECTION 14.

157.0 ACRES SUPPLEMENTAL RIGHTS FROM CERTIFICATE #76983 (G-11713 1991), AS SHOWN.

----- STREAM

----- BURIED IRRIGATION PIPE

- ◆ SYSTEM BULGE (POND A)  
LOCATED IN THE SE 1/4 NW 1/4 SECTION 14, T14S, R39E, W.M.  
0.85 AF 7 FT DEEP DUGOUT POND  
24" CMP INLET NW END  
24" CMP OVERFLOW TO E'LY POND  
24" CMP OUTLET TO E'LY POND

- ◆ SYSTEM BULGE (POND B)  
LOCATED IN THE SE 1/4 SE 1/4 SECTION 9, T14S, R39E, W.M.  
0.85 AF 7 FT DEEP PARTIALLY DUGOUT POND  
24" CMP INLET NW END  
(2) 12" CMP OUTLET TO N & S CANALS



RENEWAL DATE: 12/31/2018

THIS MAP IS FOR THE PURPOSE OF LOCATING A WATER RIGHT ONLY AND HAS NO INTENT TO PROVIDE LEGAL DIMENSIONS OR THE LOCATION OF PROPERTY LINES.

PREPARED FOR:

WILKS RANCH OREGON LTD.  
4945 WILLOW CREEK ROAD  
IRONSIDE, OR 97908

PREPARED BY:



ALL POINTS ENGINEERING AND SURVEYING, INC.  
P.O. BOX 767      TERREBONNE, OR 97760  
(541) 548-5833      www.APEandS.com