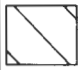
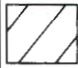



**LEGEND**

T.14S., R.21E., W.M.

T-7360

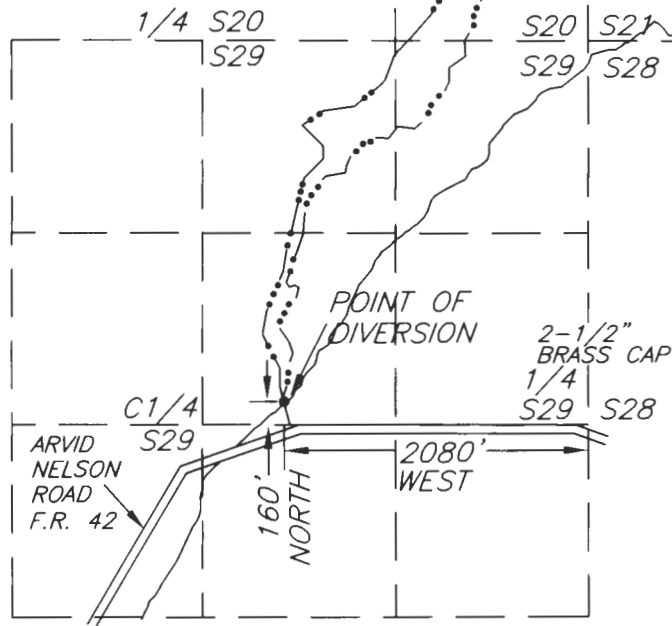
- ··· - DITCH
- POINT OF DIVERSION—IN THE SW1/4 NE1/4 SEC. 29, T.14S., R.21E., W.M., - 160' NORTH & 2080' WEST FROM E1/4 COR. SEC. 29

-  WATER ON—NORTH FORK CROOKED RIVER
-  NO CHANGE—NORTH FORK CROOKED RIVER
-  TRACK ROAD

**RECEIVED**

OCT 18 2000

WATER RESOURCES DEPT.  
SALEM, OREGON



SECTION 21	S28	ACREAGE	S28	S27
NW1/4	NW1/4	11.4		
SW1/4	NW1/4	14.6		
SE1/4	NW1/4	17.2		
NE1/4	NW1/4	16.5		
NW1/4	NE1/4	15.6		
SW1/4	NE1/4	32.9		
SE1/4	NE1/4	25.9		
NE1/4	NE1/4	10.9		
TOTAL		145.0 AC.		

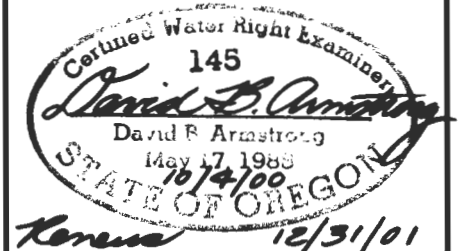
**SURVEY NOTE**

THE PREPARATION OF THIS MAP IS FOR THE PURPOSE OF IDENTIFYING THE LOCATION OF THE WATER RIGHT ONLY AND HAS NO INTENT TO PROVIDE DIMENSIONS OR LOCATIONS OF PROPERTY OWNERSHIP LINES.  
PREPARED FOR

CRAIG AND LUCY WOODWARD  
BIG SUMMIT PRAIRIES, INC.  
P.O. BOX 663  
PRINEVILLE, OR 97754  
(541)447-3841—CRAIG WOODWARD

CLAIM OF BENEFICIAL USE FOR  
CRAIG AND LUCY WOODWARD &  
BIG SUMMIT PRAIRIES, INC.

ARMSTRONG SURVEYING  
& ENGINEERING, INC.  
378 NE SECOND ST.  
PRINEVILLE, OR 97554  
(541) 447-7791 FAX (541)416-1602



SCALE: 1"=1320'

DATE: OCTOBER 4, 2000

W.O. 00-1276