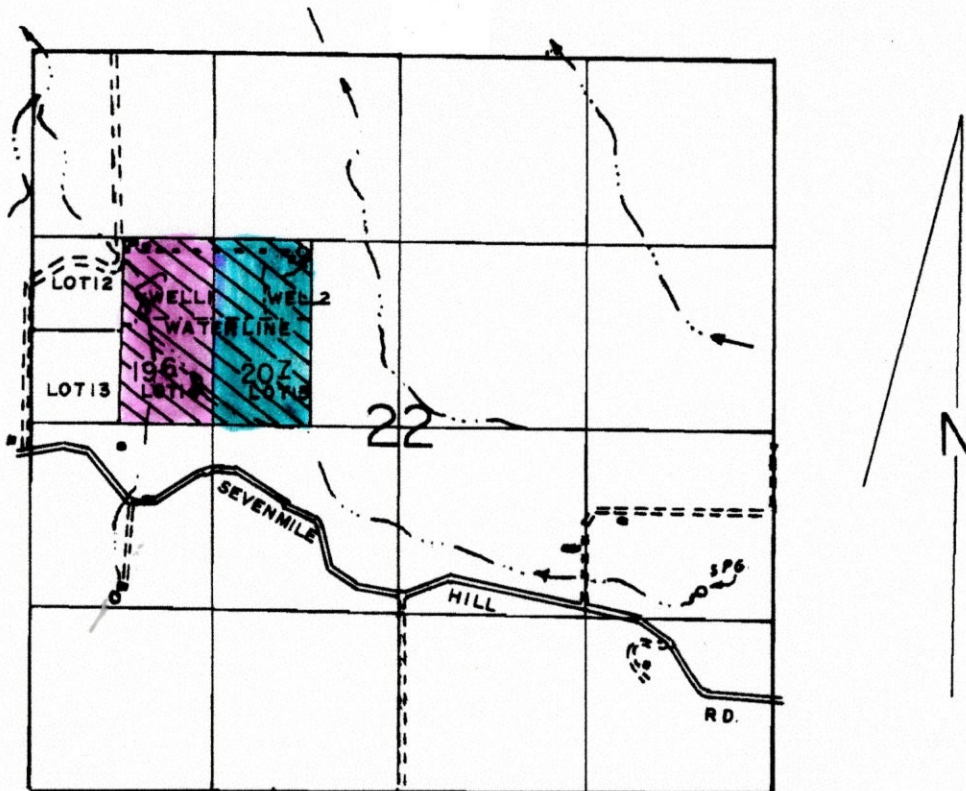


T2N, R12E, WM.

HIGHLIGHTED IN PINK REPRESENTS PARTIAL CANCELLATION FOR CERTIFICATE 82222
HIGHLIGHTED IN BLUE REPRESENTS THE 20.7 ACRES AS NOT CANCELLED.



WELL 1 LOC: 800' E & 800' N FROM W 1/4 COR. OF SEC 22.
WELL 2 LOC: 1900' E & 1125' N FROM W 1/4 COR. OF SEC 22.

SCALE: 1" = 1320'

FINAL PROOF SURVEY UNDER

Application No. G-10483 Permit No. G-9776...
IN NAME OF

RICHARD J. MURRAY

Surveyed MAY 2, 1995, by R.M. SUTTERFIELD