

E-RECEIVED
12/12/202
OWRD



FINAL PROOF MAP OF TRANSFER T-8419 CHESTER PRIOR T2N & T3N RANGE 28E WM

RECEIVED
DEC 20 2002
WATER RESOURCES DEPT
SALEM, OREGON

TRANSFER T-14186 12-12-23
DIMINUTION MAP
FOR A PORTION OF
CERT 79672

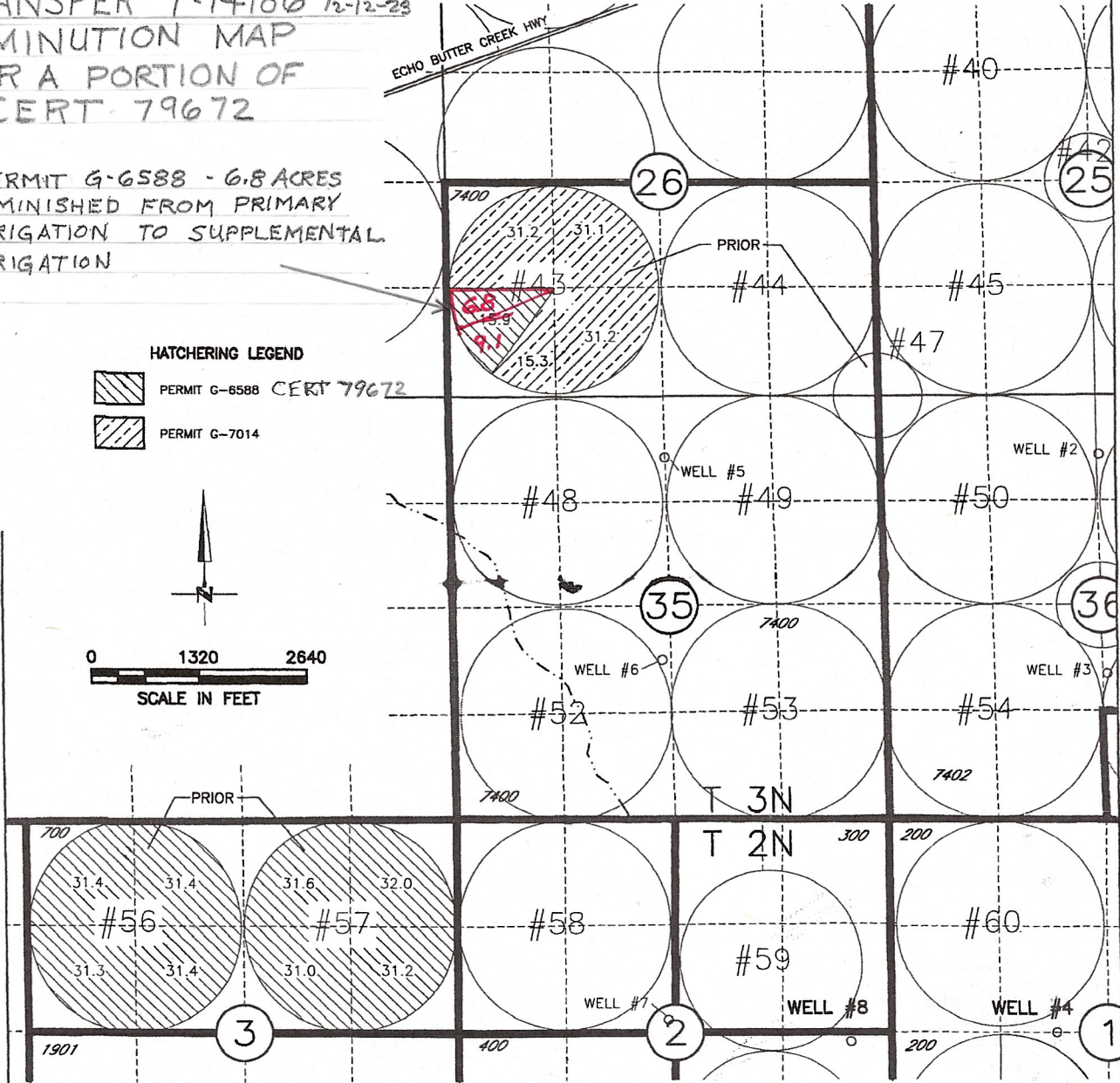
PERMIT G-6588 - 6.8 ACRES
DIMINISHED FROM PRIMARY
IRRIGATION TO SUPPLEMENTAL
IRRIGATION

HATCHERING LEGEND

-  PERMIT G-6588 CERT 79672
-  PERMIT G-7014

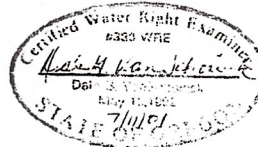


0 1320 2640
SCALE IN FEET



POINTS OF APPROPRIATION FOR PERMIT G-6588 AND G-7014

- WELL 4 - 2640 FEET SOUTH AND 630 FEET WEST FROM N1/4 CORNER SECTION 1
- WELL 8 - 2800 FEET SOUTH AND 500 FEET WEST FROM NE CORNER SECTION 2



NOTE:
THE PURPOSE OF THIS MAP IS TO IDENTIFY THE APPROXIMATE LOCATION
OF THE WATER RIGHT. IT IS NOT INTENDED TO PROVIDE INFORMATION
RELATIVE TO THE LOCATION OF PROPERTY OWNERSHIP BOUNDARY LINES.

 **SCW**
Consultants, Inc.

Architects & Engineers
Kennewick, WA 99336

3522.077
06/15/01
3522FP01.DWG