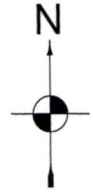
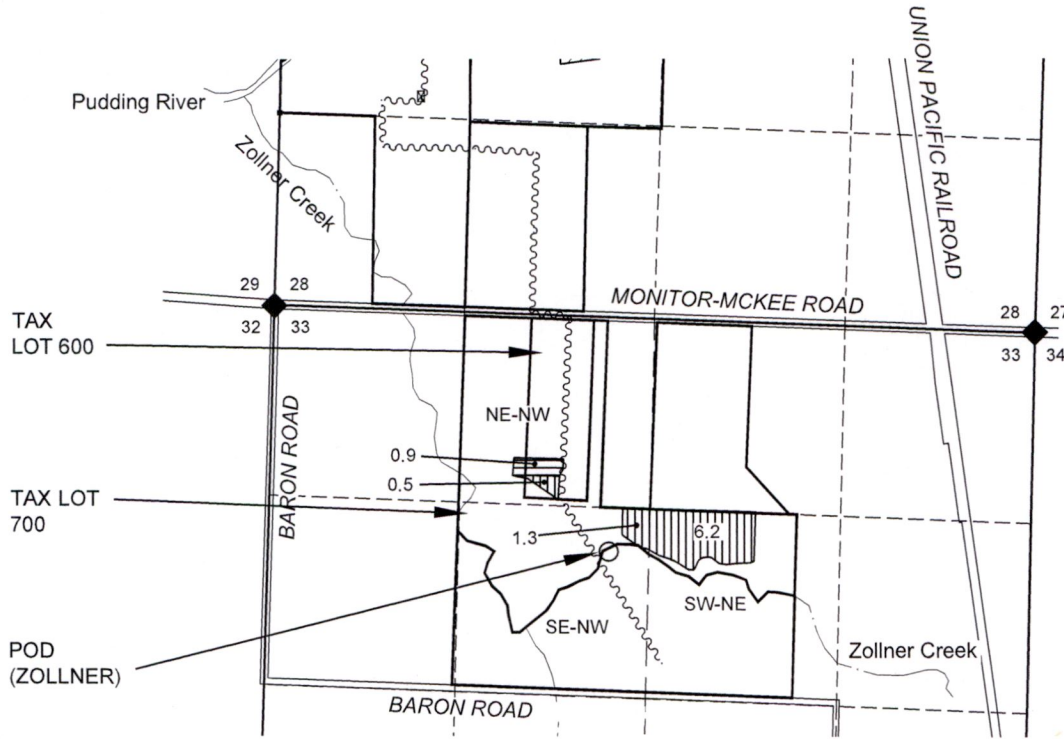


Transfer FROM Map

Section 33, T5S, R1W, Marion County
Certificate 75776



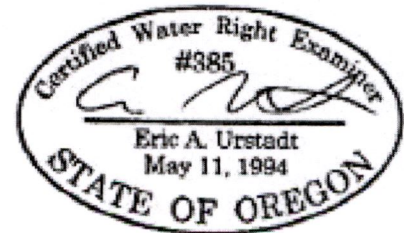
1 IN = 1320 FT
0 660 1320



RECEIVED
JUL 24 2023
OWRD

LOCATION OF POINT OF DIVERSION (POD):
POD (ZOLLNER) IS 1630' SOUTH AND 2340' EAST OF NW S33 (PER CERT. 87974)

- NOTES:
- THIS MAP IS NOT INTENDED TO PROVIDE LEGAL DIMENSIONS OR LOCATIONS OF PROPERTY OWNERSHIP LINES.
 - PROPERTY LINES AND QUARTER-QUARTER LINES ARE BASED ON THE TAX ASSESSOR MAP FOR SECTION 33, T5S, R1W.
 - THE BASIS OF THIS MAP IS A MAP FROM THE FILE OF T-7335 THAT SHOWS WHICH ACRES WERE CANCELLED, MOVED AND REMAINED FROM CERTIFICATE 22402 IN THAT TRANSFER.



- LEGEND
- ◆ DONATION LAND CLAIM (DLC) CORNER
 - ◆ SECTION CORNER
 - POINT OF DIVERSION OR APPROPRIATION
 - - - - - STREAM OR SURFACE DRAINAGE
 - TAX LOT LINE
 - SECTION LINE
 - - - - - QUARTER-QUARTER LINE
 - DLC LINES (NONE)
 - ~ CONVEYANCE PIPELINES.
 - ▨ FROM ACRES 75776
 - ▨ REMAIN ACRES 75776

14288

MAP BY:
ASPEN RURAL LAND CONSULTING
ERIC URSTADT, PE, PLS
971-250-1520
JUN 2023
FesslerJoeBeyer7S