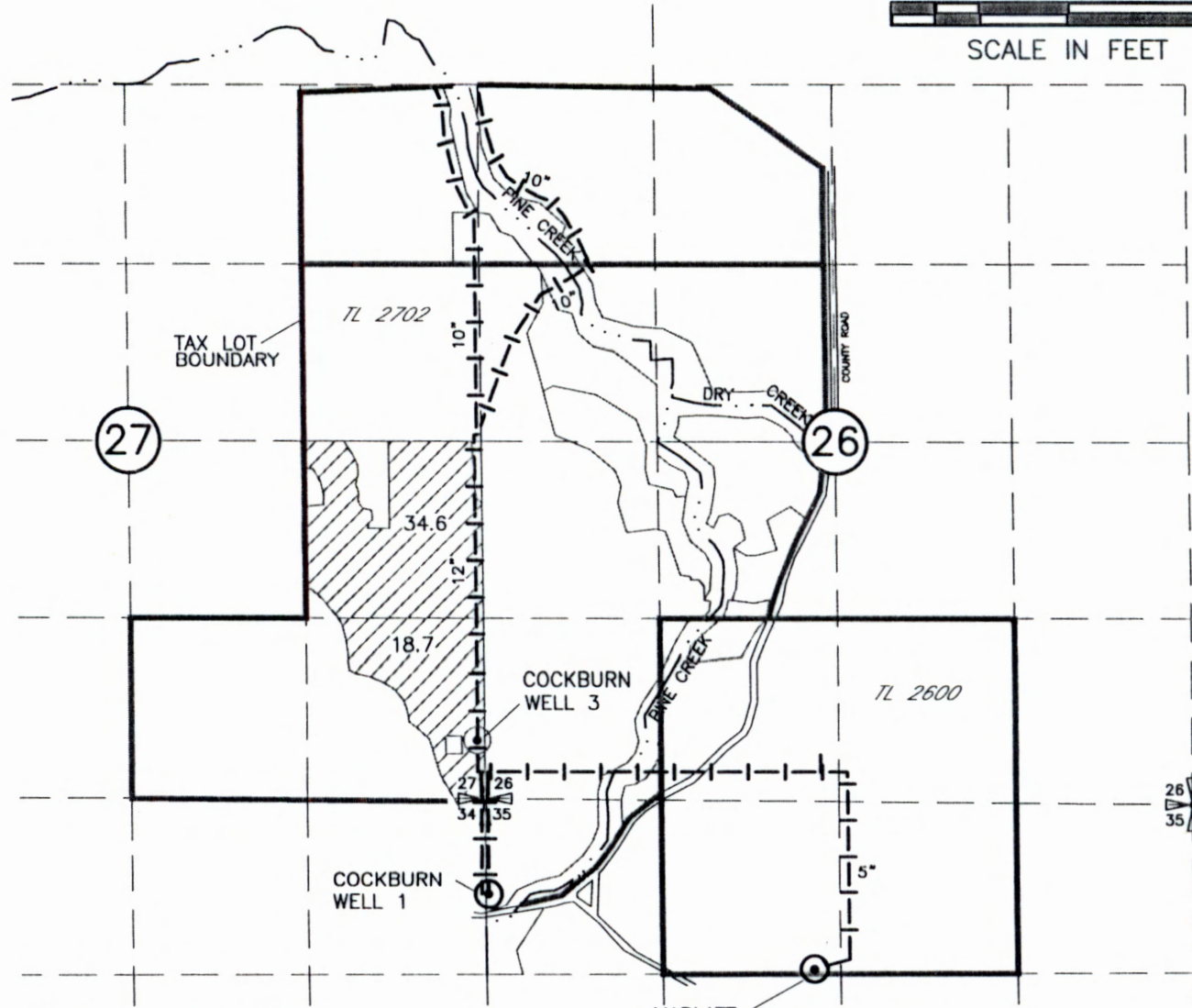
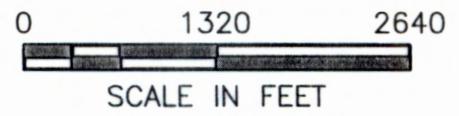
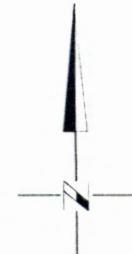


FINAL PROOF  
 TRANSFER MAP FOR G-12728  
 THOMAS O. WILLIAMS  
 and ASSOC, INC.  
 T6N, R34E WM,  
 UMATILLA COUNTY

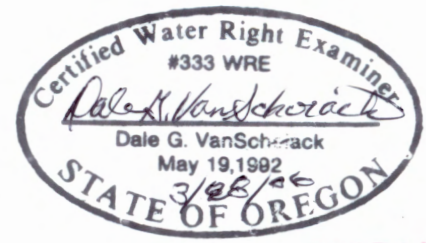


POINTS OF APPROPRIATION

COCKBURN WELL #1  
 LOCATED 730' S AND 20' E FROM THE NW CORNER OF SEC 35  
 METER IS LOCATED AT WELL SITE

COCKBURN WELL #3  
 LOCATED 440' N AND 30' W FROM THE SE CORNER OF SEC 27  
 METER IS LOCATED AT WELL SITE

MARLATT WELL #4  
 LOCATED 1300' S AND 2460' E FROM THE NW CORNER OF SEC 35  
 METER IS LOCATED AT WELL SITE



RECEIVED

RECEIVED  
 OVER THE COUNTER

NOTE:  
 THE PURPOSE OF THIS MAP IS TO IDENTIFY THE APPROXIMATE LOCATION  
 OF THE WATER RIGHT. IT IS NOT INTENDED TO PROVIDE INFORMATION  
 RELATIVE TO THE LOCATION OF PROPERTY OWNERSHIP BOUNDARY LINES.

MAY 24 2006

DRAWING: H:\CAD\AG\3522\317\3522317FPW.dwg  
 PRINTED BY: Roger Willard on 03/24/06 10:11 AM



Architects & Engineers  
 Kennewick, WA 99336