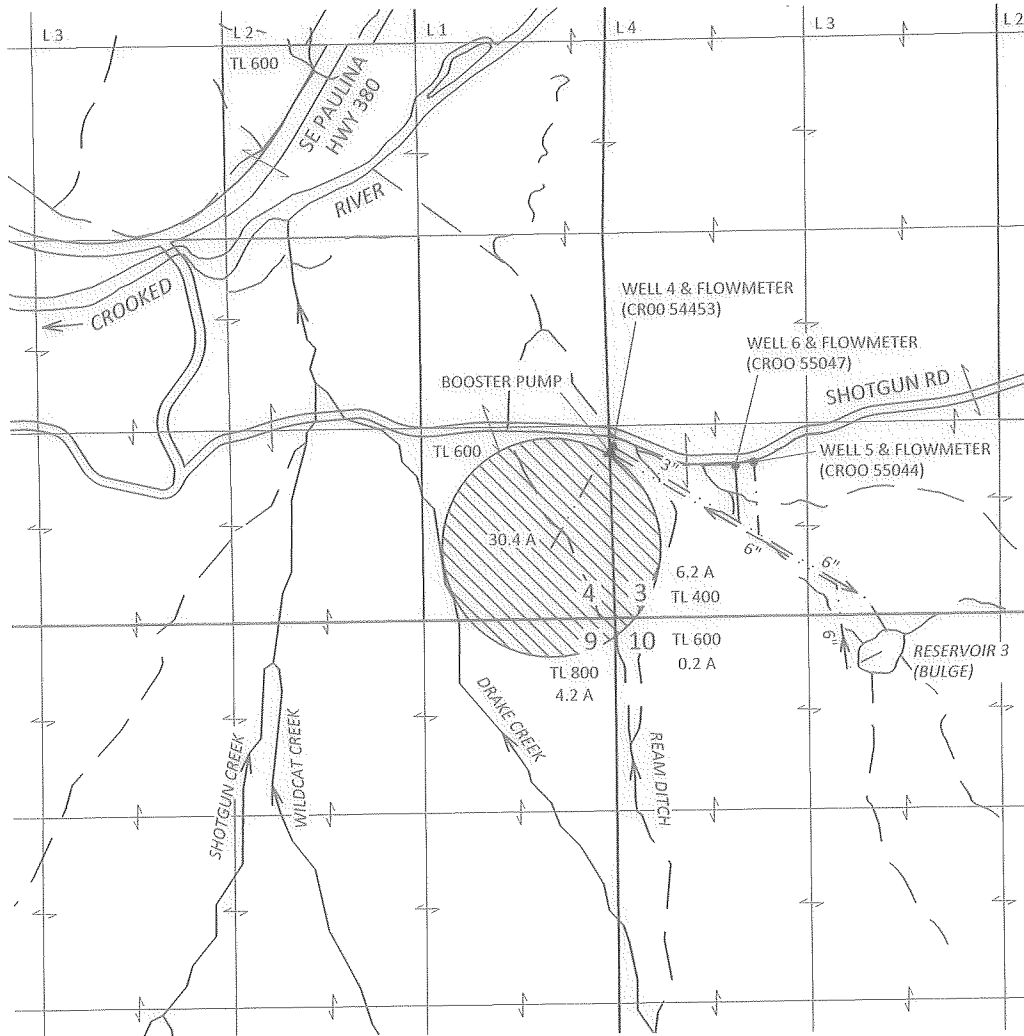


Sections 3, 4, 9 & 10, T17S, R20E, W.M., Crook County, Oregon

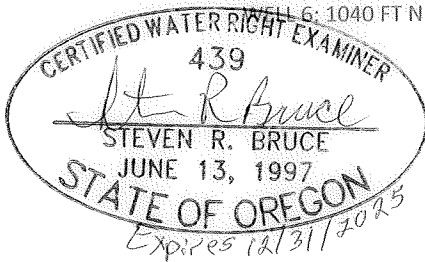
REVISED CLAIM OF BENEFICIAL USE MAP
 Application G-18112, Amendment T-13465, Permit G-18479
 Shotgun Ranch LLC



WELL 4: 1180 FT N AND 5 FT WEST FROM THE SW CORNER SECTION 3, T17S, R20E, W.M.
 WELL 5: 1070 FT N AND 960 FT EAST FROM THE SW CORNER SECTION 3, T17S, R20E, W.M.
 WELL 6: 1040 FT N AND 840 FT EAST FROM THE SW CORNER SECTION 3, T17S, R20E, W.M.

RECEIVED
 JAN 12 2024

OWRD



Site Inspection Conducted
 6/23/2022

EXPLANATION

- PLACE OF USE SUPPLEMENTAL IRRIGATION
41.0 ACRES
PRIORITY: 6/29/2015
- WELL
- BOOSTER PUMP
- PIPE



January 9, 2024

This map is not intended to provide legal dimensions or locations of property ownership lines

Figure 1

KPFF 1700014.36

SKOOKUM
 WATER ASSOCIATES INC

1626 VICTORIAN WAY
 EUGENE, OR 97401
 (503) 319-8926