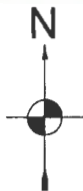


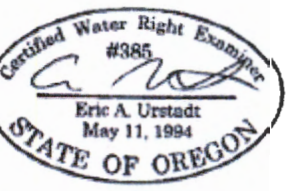
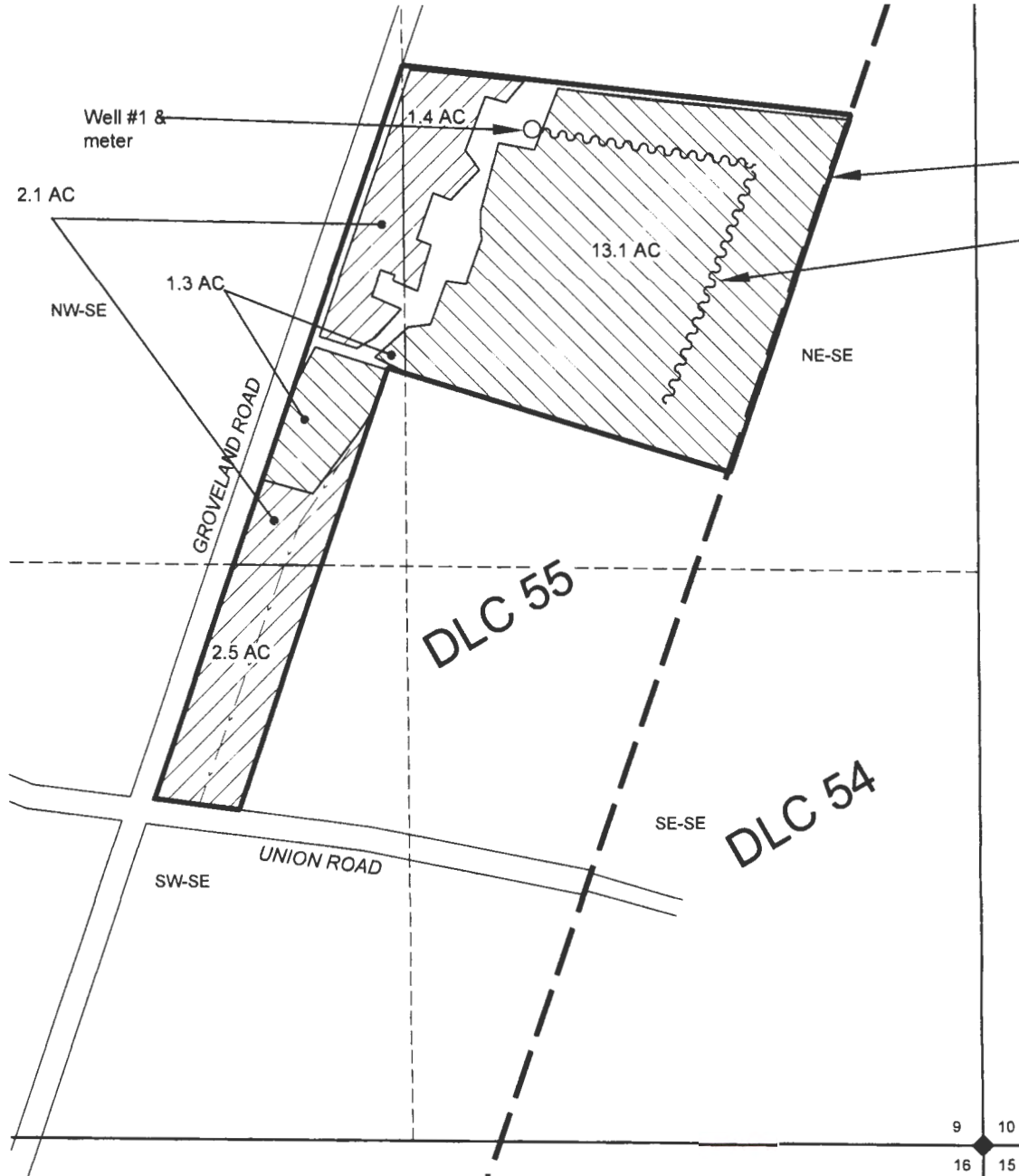
MAP FOR

Claim of Beneficial Use

S 9, T1N, R2W, WASHINGTON COUNTY
Appl G-14555, Permit G-13382



1 IN = 400 FT
0 200 400



Exp. 30 JUN 2024

MAP BY:
ASPEN RURAL LAND CONSULTING
ERIC URSTADT, PE, PLS
971-250-1520
Aug 2023
SEMINGSON11

LOCATION OF POA (WELL #1) IS 2335' N & 1030' W OF SE CORNER S9 .

LEGEND

- DONATION LAND CLAIM (DLC) CORNER
- SECTION CORNER
- POINT OF APPROPRIATION (POA)
- STREAM OR SURFACE DRAINAGE
- TAX LOT LINE
- SECTION LINE
- QUARTER-QUARTER LINE
- DLC LINES
- CONVEYANCE MAINLINE
- IRRIGATION
- NURSERY

RECEIVED
SEP 1 1 2023
OWRD

NOTES:

- THIS MAP IS NOT INTENDED TO PROVIDE LEGAL DIMENSIONS OR LOCATIONS OF PROPERTY OWNERSHIP LINES.
- PROPERTY, DLC AND QUARTER-QUARTER LINES ARE BASED ON THE TAX ASSESSOR MAP FOR SECTION 9, T1N, R2W.
- WATER CONVEYANCE LINES ARE ALL WITHIN THE PROPERTY AND THEREFORE ARE NOT SHOWN.
- IRRIGATION AREAS WERE DETERMINED FROM AERIALS PRIOR TO 2018 AS 1 OCT 2018 WAS THE COMPLETION DEADLINE.