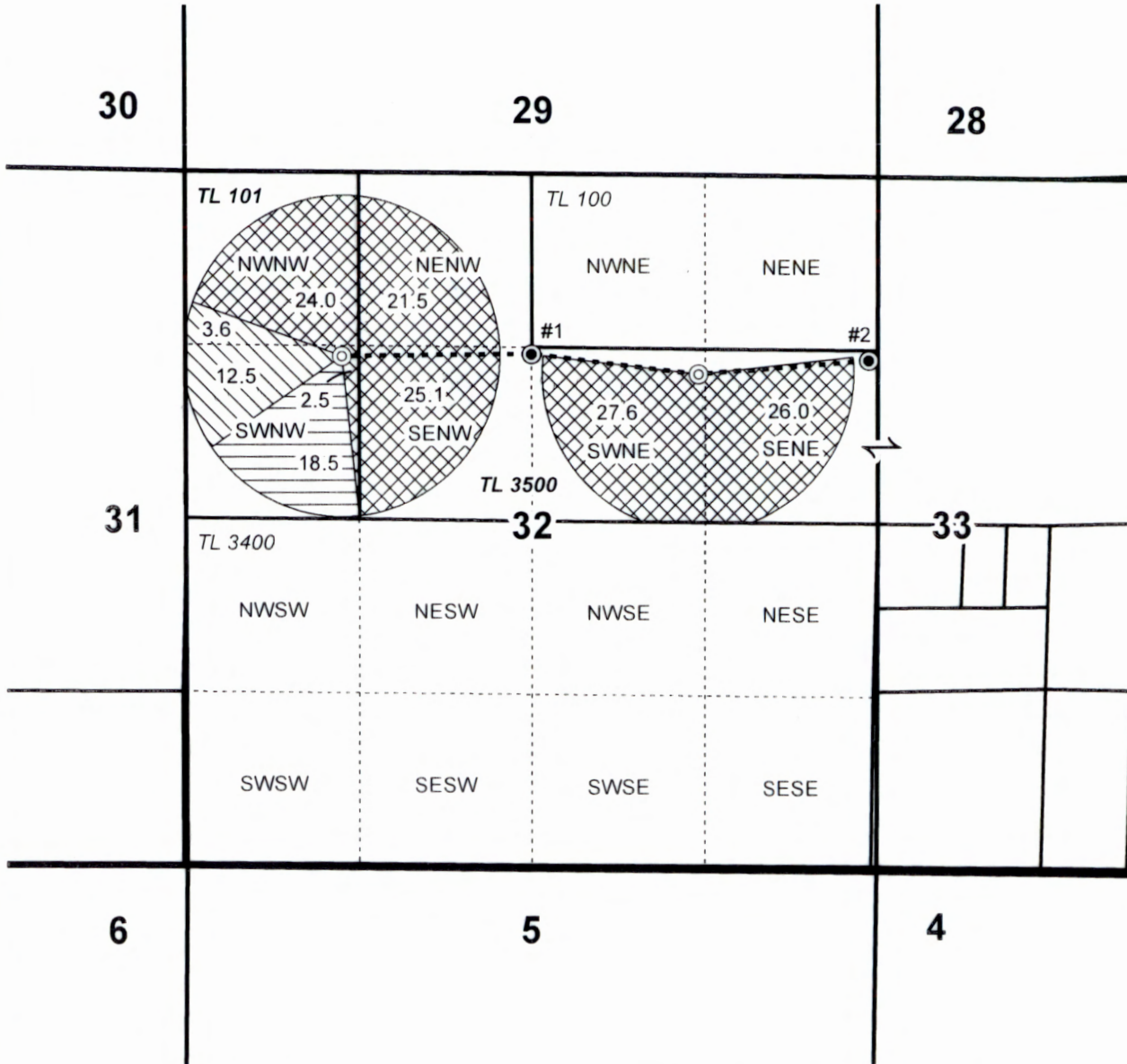
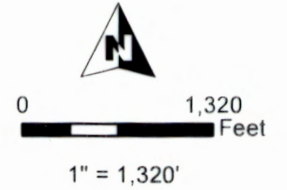


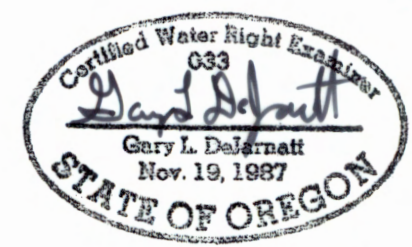
Well Locations:  
 #1 (LAKE 615 & 50176 / L-03522): 1300' N, 2640' W of E 1/4 Cor Sec 32  
 #2 (LAKE 51028 & 50947 / L-31121): 1242' N, 63' W of E 1/4 Cor Sec 32

**T26S R17E, WM,  
 LAKE COUNTY, OR**



- Well & Power Meter
- ⊙ In-Line FLOW Meter
- Pipeline
- ▬ POU IR 7-10-1973 (from C-77737)
- ▩ POU IR 7-2-1980 (from C-53350)
- ▨ POU IR 7-2-1980 (from C-53349)
- ▭ Township
- ▭ Section
- Quarter Quarter
- ▭ Tax Lot

RECEIVED  
 MAY 6 1 2020



RENEWAL DATE 12/31/2021



**CLAIM OF BENEFICIAL USE MAP  
 David Roth**

This map is not intended  
 to provide legal dimensions  
 or locations of property  
 ownership lines.

**WATER RIGHT SERVICES, LLC**  
 PO BOX 1830, BEND, OR 97709  
 WWW.OREGONWATER.US CCB # 197121  
 johnshort@usa.com 541-389-2837