

REVISION	BY
2/28/24	RC

ANDERSON ENGINEERING AND SURVEYING, INC.
P.O. BOX 28
LAKEVIEW, OREGON 97630
(541) 947-4407/FAX: 947-2321
WWW.ANDERSONENGINEERING.COM

FOR:
DWIGHT ROTH
P.O. BOX 107
CHRISTMAS VALLEY, OR
97641

CLAIM OF BENEFICIAL MAP
TRANSFER T-9420
SEC. 3, 7 & 18, T25S, R18E W.M.

DATE:	6/13/2023
SCALE:	1" = 1320'
DWG. BY:	R.C.
JOB:	2023-005
FILE:	2023-005
SHEET:	1 OF 1

CLAIM OF BENEFICIAL USE MAP

FOR
GAYLN ROTH

SECTIONS 1, 2, 11 & 12, T25S R17E W.M.
LAKE COUNTY, OREGON

LEGEND

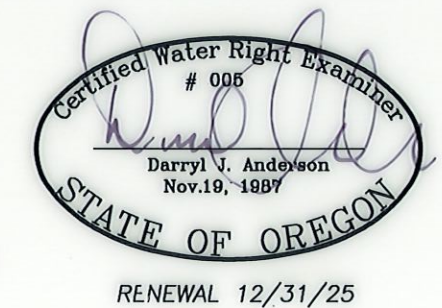
- SECTION LINE
- 1/4 SECTION LINE
- 1/16 SECTION LINE
- MAINLINE

TRANSFER NO. T-9461

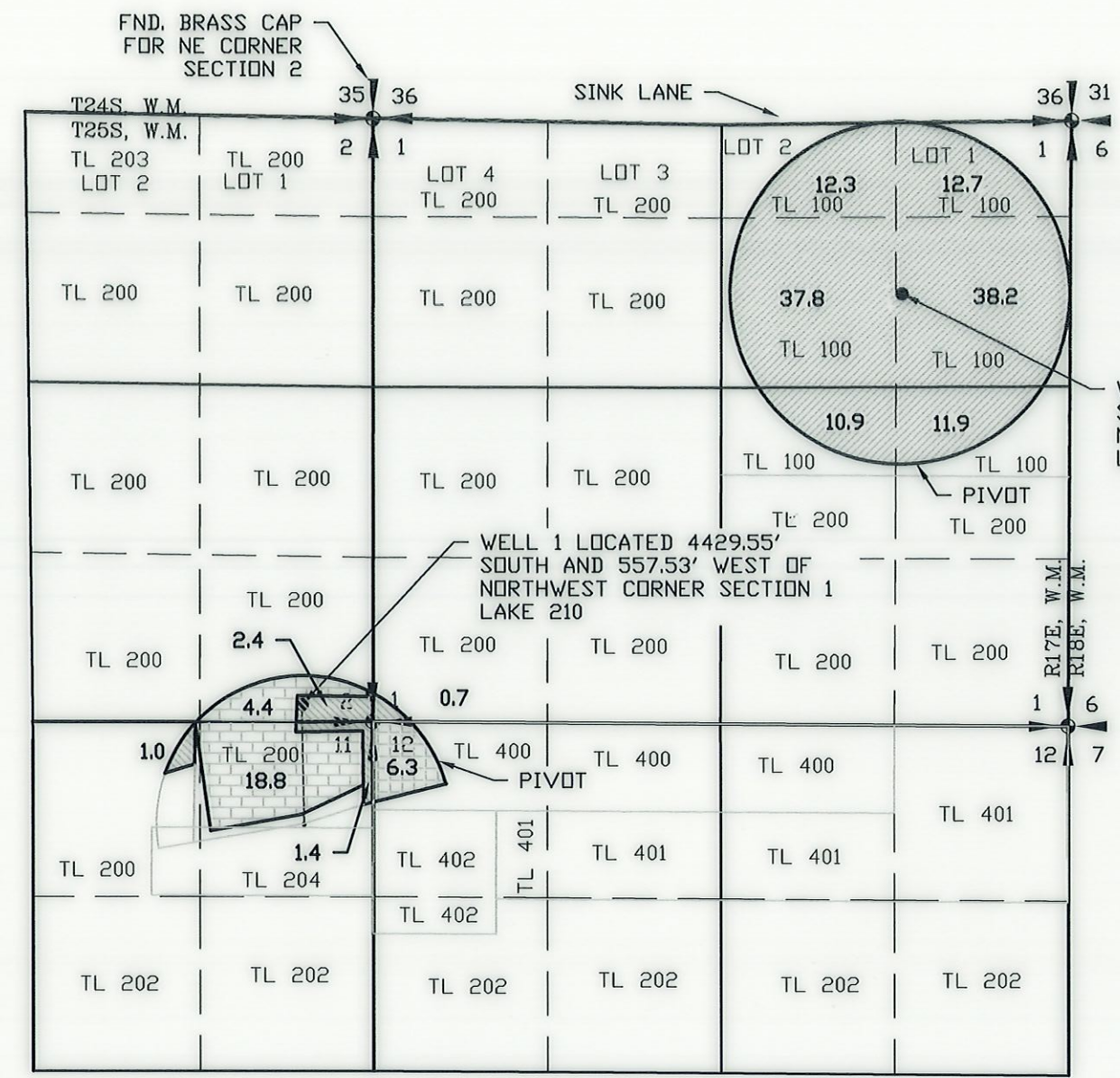
RECEIVED
MAR 04 2024
OWRD



SCALE: 1"=1320'



NOTE:
PREPARATION OF THIS MAP IS FOR IDENTIFYING WATER RIGHTS ONLY. IT HAS NO INTENT TO PROVIDE LOCATIONS OR DIMENSIONS OF PROPERTY BOUNDARIES.



WELL 6 LOCATED 1320.08' SOUTH AND 4019.37' EAST OF NORTHWEST CORNER SECTION 1 LAKE 51364

WELL 1 LOCATED 4429.55' SOUTH AND 557.53' WEST OF NORTHWEST CORNER SECTION 1 LAKE 210

- CHANGE IN POA, NO CHANGE OF POU, CERTIFICATE 57916 - 123.8 ACRES
- CHANGE IN POU, NO CHANGE OF POA, CERTIFICATE 75630 - 6.3 ACRES
- CHANGE IN POA, NO CHANGE OF POU, CERTIFICATE 43774 - 23.2 ACRES
- CHANGE IN POU, ADDITIONAL POU, CERTIFICATE 43774 - 5.5 ACRES