

PINE CREEK DECREE

↑ N

1" = 1320'

AUTH
* POD - McMULLEN SL.
T. 75 R. 46 E
SECT 31
NWSW

RECEIVED

JUL 21 2023

OWRD
SALEM, OREGON

RECEIVED

JUN 20 2023

OWRD

14285



PINE CREEK DECREE
T. 8S R. 46E

↑ N
1"=1320'

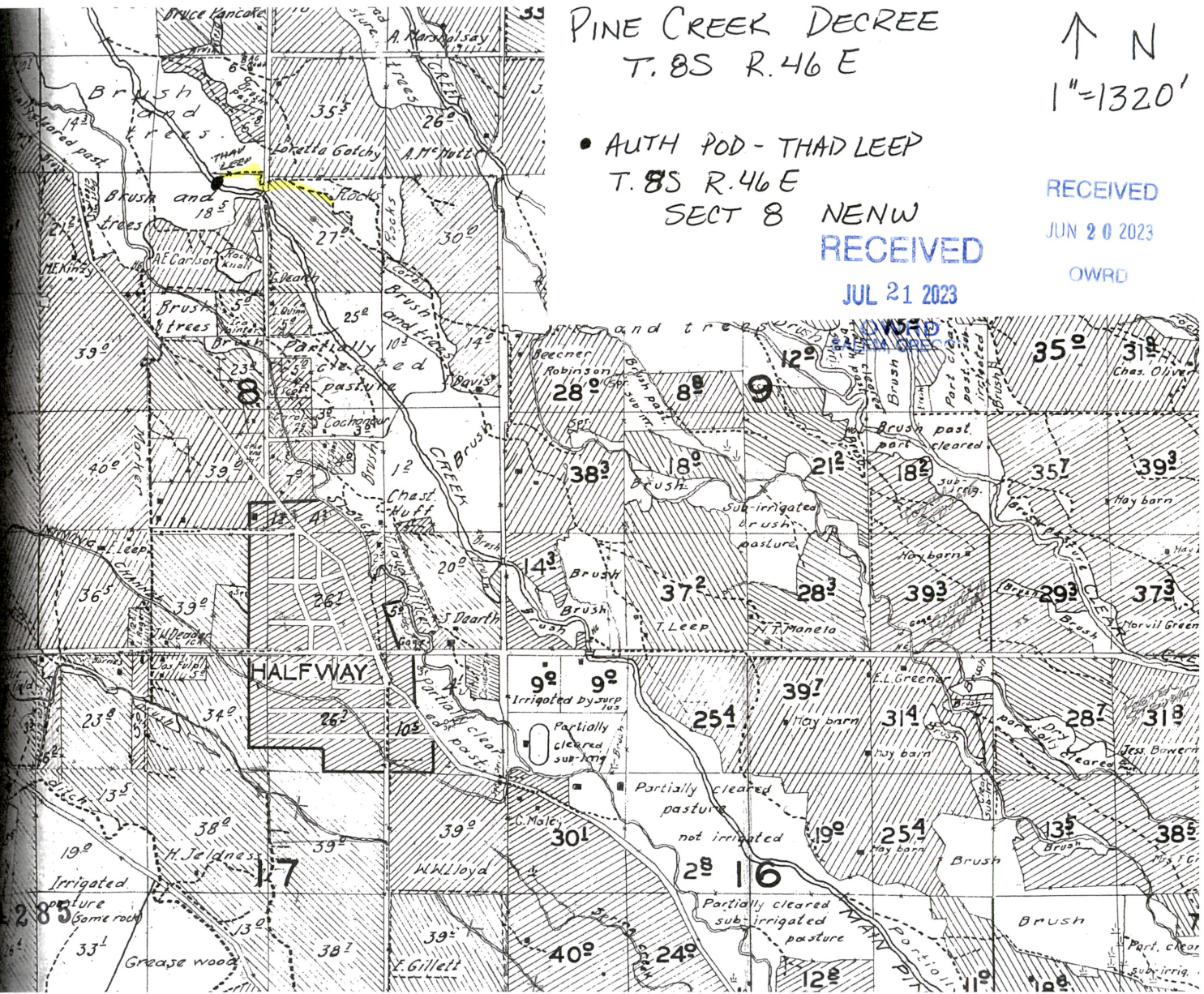
• AUTH POD - THAD LEEP
T. 8S R. 46E
SECT 8 NENW

RECEIVED

RECEIVED
JUN 20 2023

JUL 21 2023

OWRD



THIS MAP WAS PREPARED FOR ASSESSMENT PURPOSE ONLY

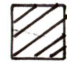



N.E. 1/4 SEC. 8 T. 8S. R. 46E. W.M.
BAKER COUNTY
1" = 200'

08S46E08A

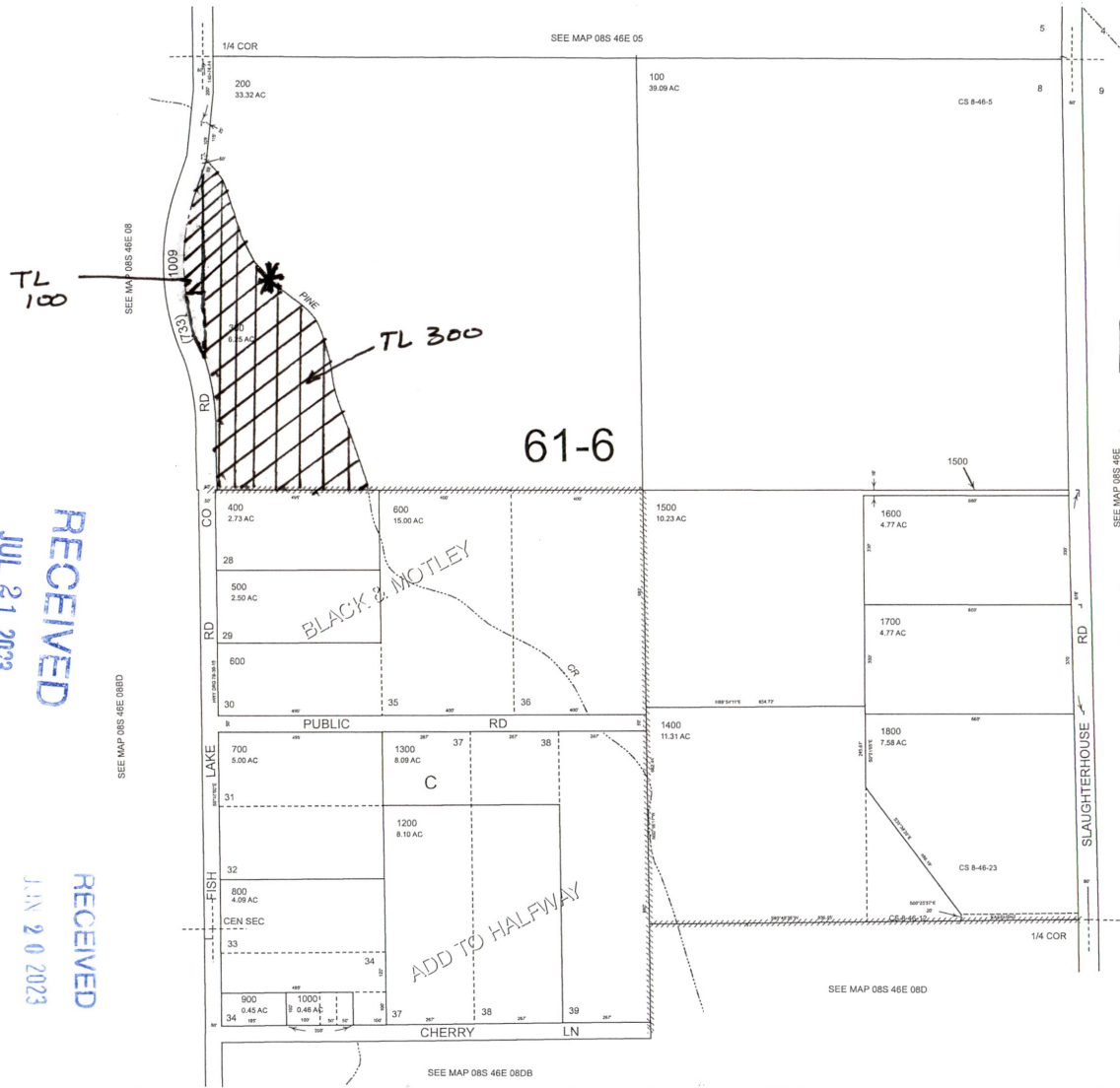
Cancelled
1100



 C-10238
1.0 AC 1895

 C-10266
6.25 AC 1887

* PROPOSED POD
PUMP -
44.88972
-119.11337
730's : 233' E
FR. N 1/4 CORN.
SECT. 8



RECEIVED
JUL 21 2023
OWHD
Salem, Oregon

RECEIVED
JUN 20 2023
OWRD

Revised: DBJ
12/24/2008

08S46E08A