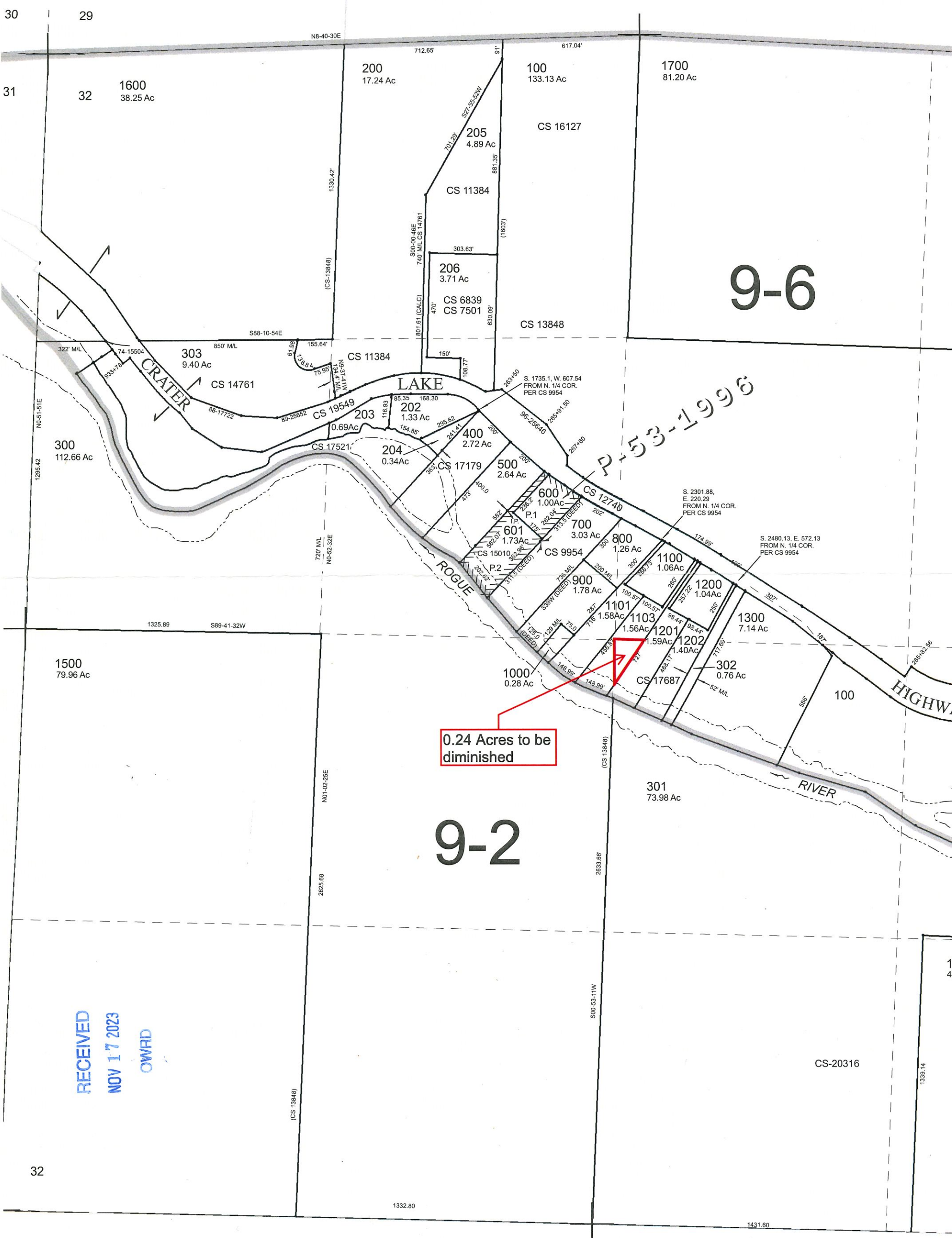


SECTION 32, T.33S., R.1E., W.M.
JACKSON COUNTY
1" = 400'

SEE MAP 33 1E



9-6

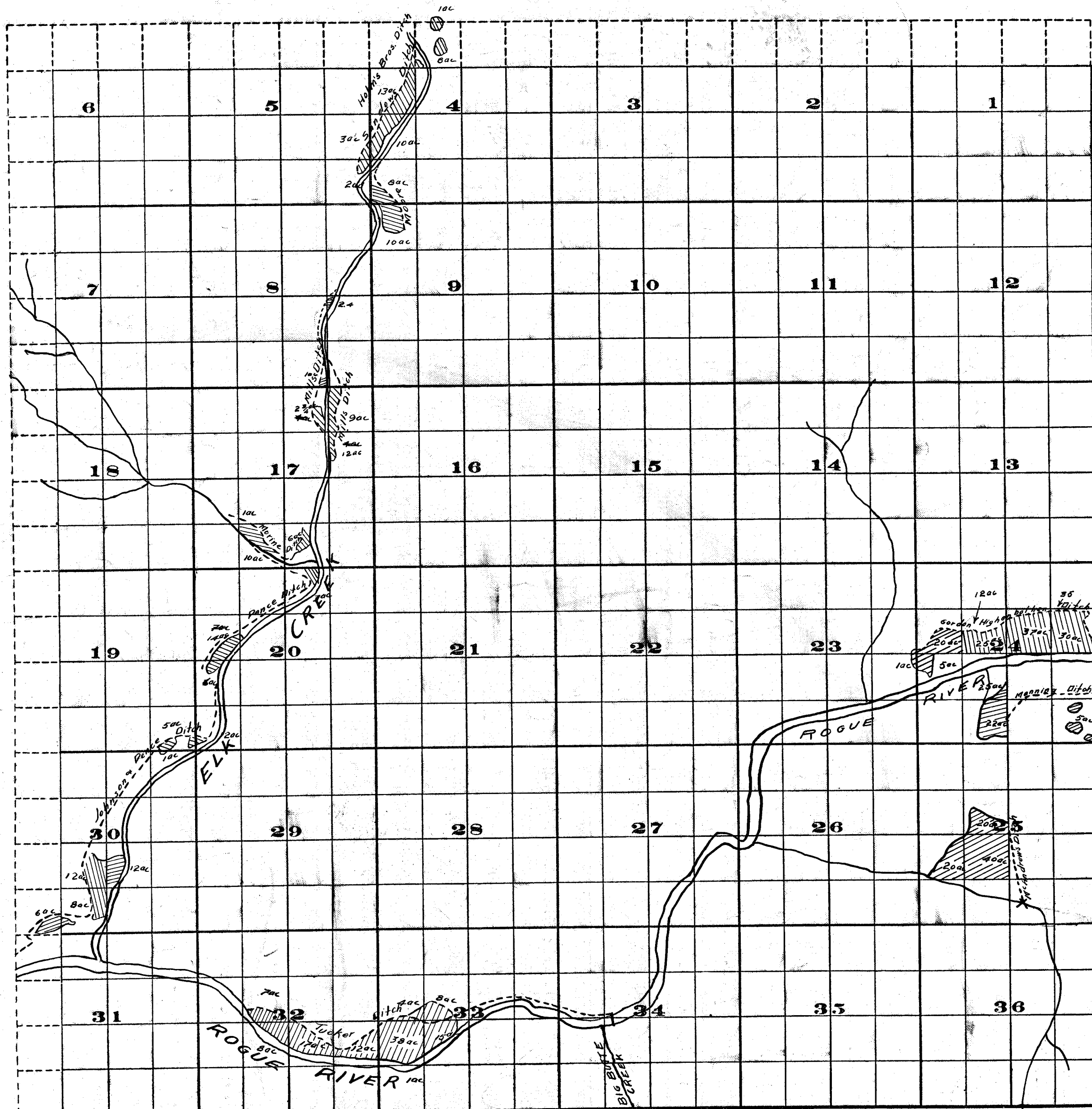
9-2

0.24 Acres to be diminished

RECEIVED
NOV 17 2023
OWRD

SEE MAP 34 1E

Township 33S, Range 1E.



Survey by H.K. Donnelly April 1910

FROM OFFICE OF THE STATE ENGINEER, SALEM, OREGON



M.D.
D.F.M. 417-11

Scale of Feet.

Adjudication

Rogue River and Tributaries

John H Lewis State Engr

Examined Sept 18, 1911

33S. 1E