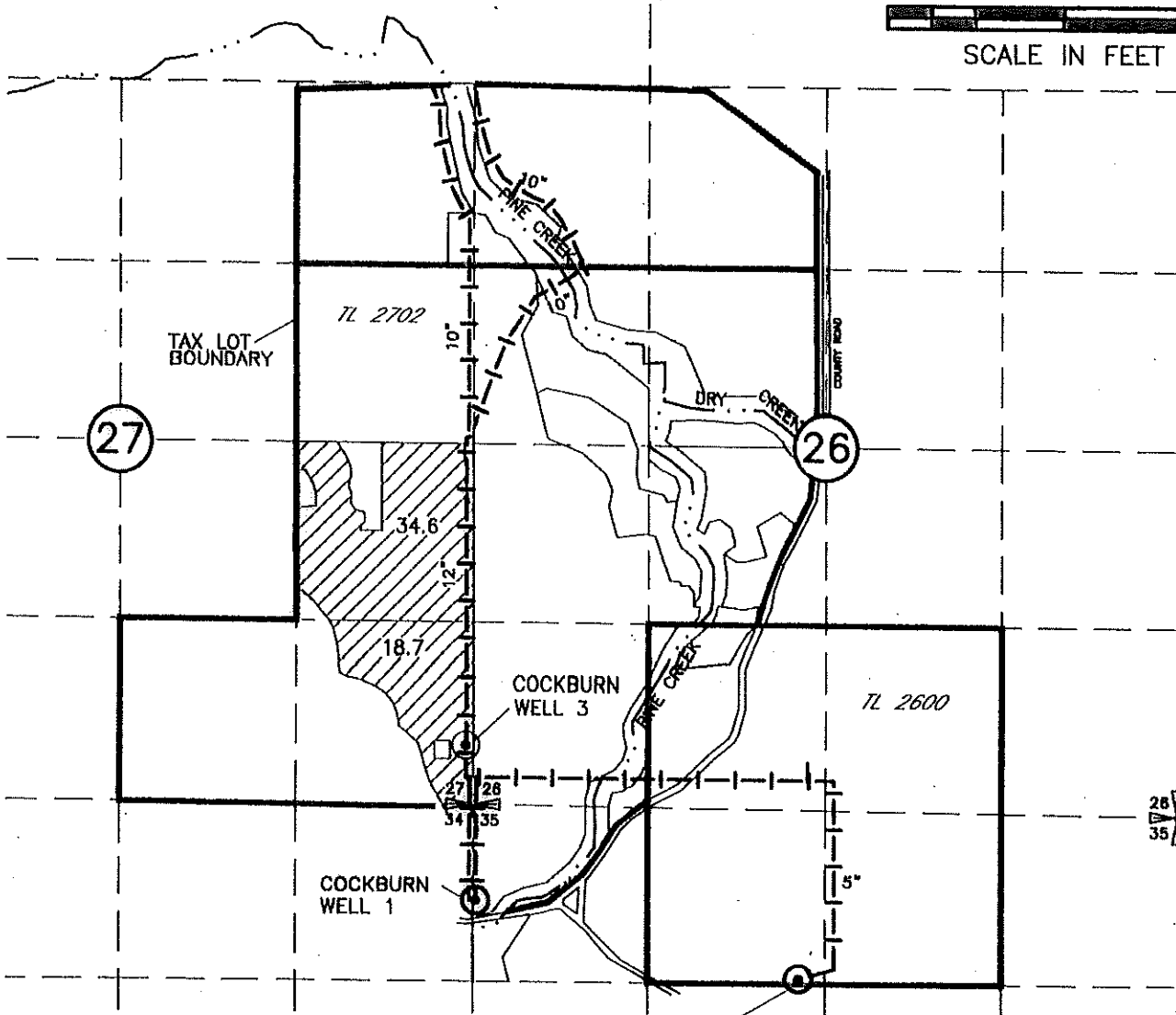
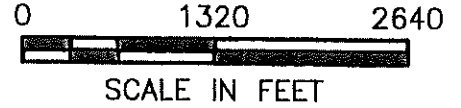
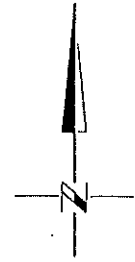


FINAL PROOF
 TRANSFER MAP FOR G-12728
 THOMAS O. WILLIAMS
 and ASSOC, INC.
 T6N, R34E WM,
 UMATILLA COUNTY

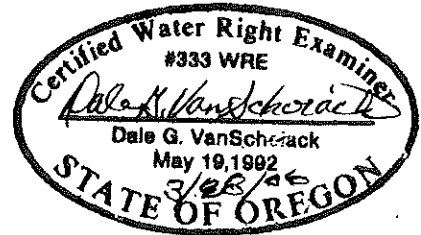


POINTS OF APPROPRIATION

COCKBURN WELL #1
 LOCATED 730' S AND 20' E FROM THE NW CORNER OF SEC 35
 METER IS LOCATED AT WELL SITE

COCKBURN WELL #3
 LOCATED 440' N AND 30' W FROM THE SE CORNER OF SEC 27
 METER IS LOCATED AT WELL SITE

MARLATT WELL #4
 LOCATED 1300' S AND 2460' E FROM THE NW CORNER OF SEC 35
 METER IS LOCATED AT WELL SITE



RECEIVED

RECEIVED
 OVER THE COUNTER

NOTE:
 THE PURPOSE OF THIS MAP IS TO IDENTIFY THE APPROXIMATE LOCATION
 OF THE WATER RIGHT. IT IS NOT INTENDED TO PROVIDE INFORMATION
 RELATIVE TO THE LOCATION OF PROPERTY OWNERSHIP BOUNDARY LINES.

MAY 21 1992

DRAWING: H:\CAD\AG\3522\317\3522317FPW.dwg
 PRINTED BY: Roger Willard on 03/24/06 10:11 AM

SCM
 CONSULTANTS, INC.

Architects & Engineers
 Kennewick, WA 99336