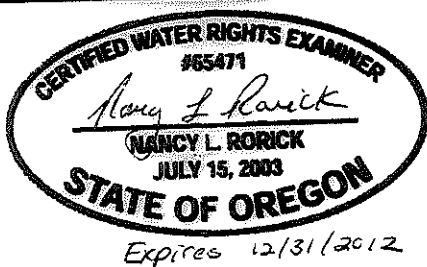
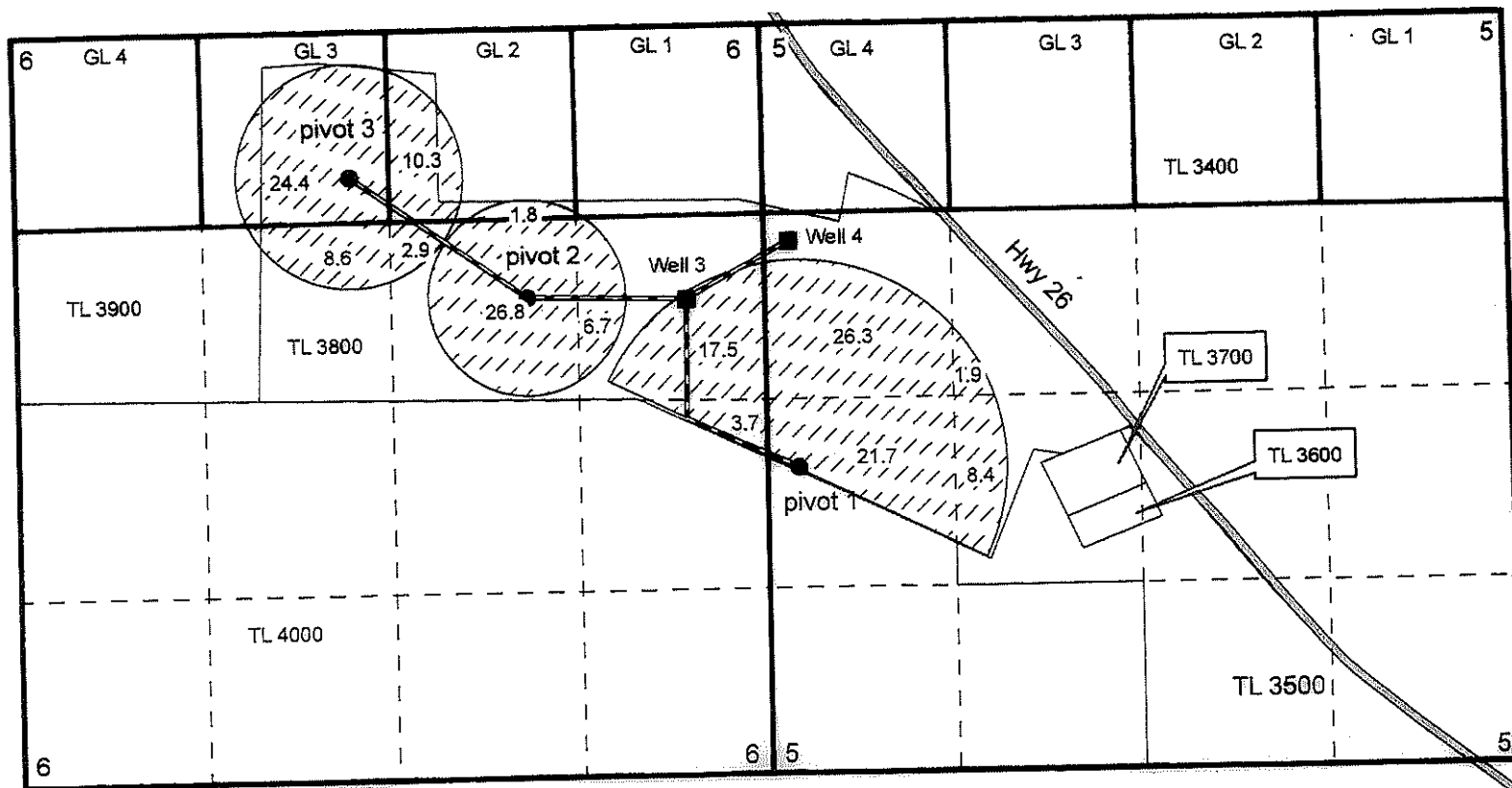


T16S R43E Sections 5 and 6, W.M.



- Pivot
- Well
- 10-inch pipeline
- 8-inch pipeline
- ▨ Irrigation and supplemental irrigation
- - Quarter Quarter Section Lines
- Government lots
- Section Lines
- Tax lot lines
- Highway

Well 3 (Malh 223) is located 1,635 feet south and 555 feet west of the NE corner of section 6.

Well 4 (Malh 216) is located 1,525 feet south and 170 feet east of the NW corner of section 5.

This map is not intended to provide legal dimensions or locations of property ownership lines



0 660 1,320
Feet

1 inch = 1,320 feet

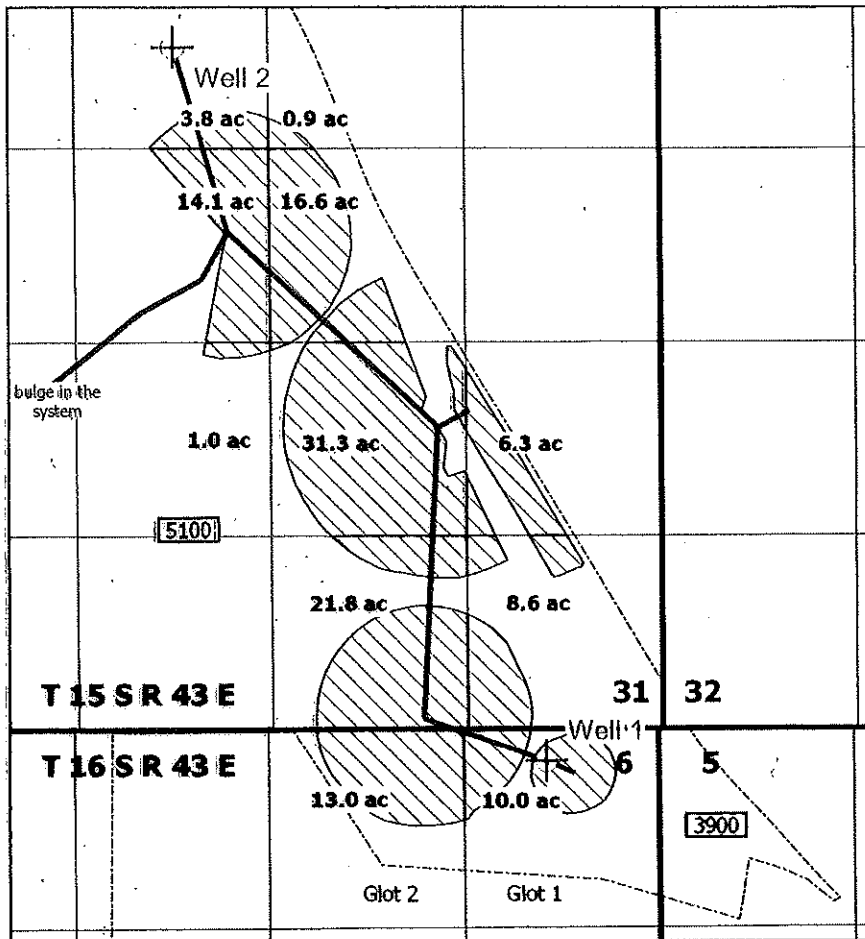
Claim of Beneficial Use

T.L. 3800 and 3900

Chris Ray

Transfer T-8876

Nancy Rorick Consulting



RECEIVED
 AUG 16 2015
 DWR

LEGEND

- Transfer T-8876 Place of Use (127.4 ac total)
- Malheur County Taxlot Boundary 05100
- Buried Mainline



T-8876 Claim of Beneficial Use Map Malheur County Tax lots 3900 and 5100

Prepared on behalf of Eddie Heid

1 inch = 1,320 feet



Notes:

This map is not intended to provide legal dimensions or locations of property ownership lines.

Well 1: 250' S and 760' W from the NE Corner of Section 6

Well 2: 4,440' N and 3,150' W from from the NE Corner of Section 6