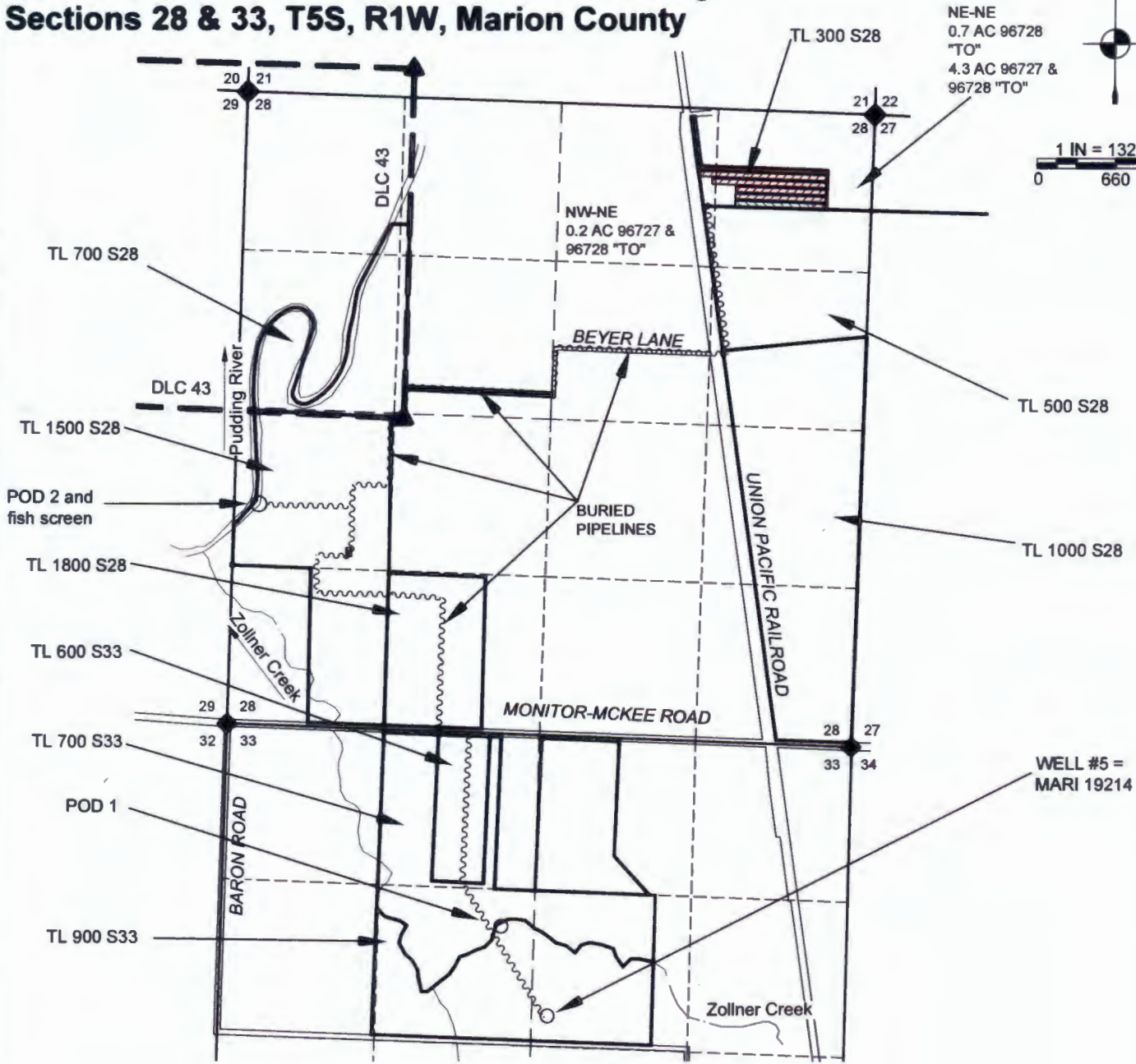


Claim of Beneficial Use Map

Sections 28 & 33, T5S, R1W, Marion County



1 IN = 1320 FT
0 660 1320



LOCATIONS OF POINTS OF DIVERSION (POD) AND WELL:
 POD 1 IS 1695' SOUTH AND 2295' EAST FROM NW S33.
 POD 2 IS 1830' NORTH AND 260' EAST FROM NW S33.
 WELL #5 IS 2390' SOUTH & 2800' EAST FROM NW S33**.
 ** PER CERT. 96728

THIS MAP IS NOT INTENDED TO PROVIDE LEGAL DIMENSIONS OR LOCATIONS OF PROPERTY OWNERSHIP LINES.

- LEGEND**
- DONATION LAND CLAIM (DLC) CORNER
 - SECTION CORNER
 - POINT OF DIVERSION OR APPROPRIATION
 - STREAM OR SURFACE DRAINAGE
 - TAX LOT LINE
 - SECTION LINE
 - QUARTER-QUARTER LINE
 - DLC LINES
 - CONVEYANCE PIPELINES
 - "TO" ACRES 96727 IRRIG & 96728 SUPPL
 - "TO" ACRES 96728 IRRIG



RECEIVED
MAR 18 2024

OWRD

MAP BY:
ASPEN RURAL LAND CONSULTING
 ERIC URSTADT, PE, PLS
 971-250-1520
 FEB 2024
 FesslerEbner5J