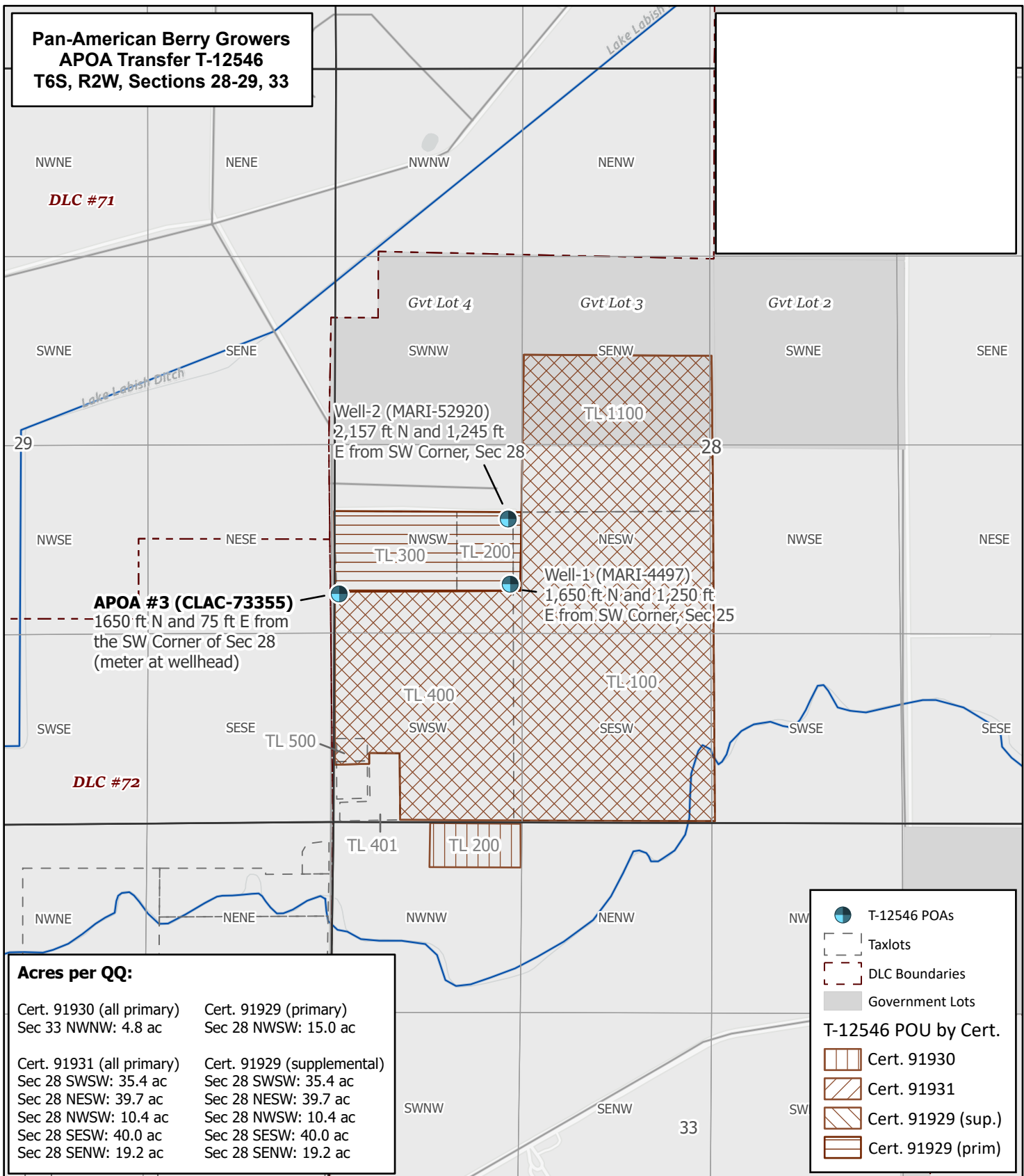


**Pan-American Berry Growers  
APOA Transfer T-12546  
T6S, R2W, Sections 28-29, 33**



**Acres per QQ:**

Cert. 91930 (all primary) Sec 33 NWNW: 4.8 ac	Cert. 91929 (primary) Sec 28 NWSW: 15.0 ac
Cert. 91931 (all primary) Sec 28 SWSW: 35.4 ac Sec 28 NESW: 39.7 ac Sec 28 NWSW: 10.4 ac Sec 28 SESW: 40.0 ac Sec 28 SENW: 19.2 ac	Cert. 91929 (supplemental) Sec 28 SWSW: 35.4 ac Sec 28 NESW: 39.7 ac Sec 28 NWSW: 10.4 ac Sec 28 SESW: 40.0 ac Sec 28 SENW: 19.2 ac

● T-12546 POAs

□ Taxlots

□ DLC Boundaries

■ Government Lots

**T-12546 POU by Cert.**

▨ Cert. 91930

▨ Cert. 91931

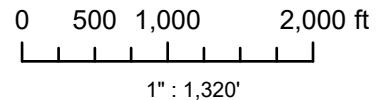
▨ Cert. 91929 (sup.)

▨ Cert. 91929 (prim)



311 B Avenue, Suite P  
Lake Oswego, OR 97034  
(503) 954-1326

This map is not intended to provide legal dimensions or locations of property ownership lines.



1	DATE	AUTH	DRAFT
No.	Date	By	Revisions

**Proj#: 2311001**  
**Pan-America**  
Pan-American Berry Growers  
6826 55th Avenue NE  
Salem, OR 97035

