

# CLAIM OF BENEFICIAL USE MAP

COBU MAP # 1235 (A)

RECEIVED

JUN 04 2020

OWRD

TO CHANGE PLACE OF USE

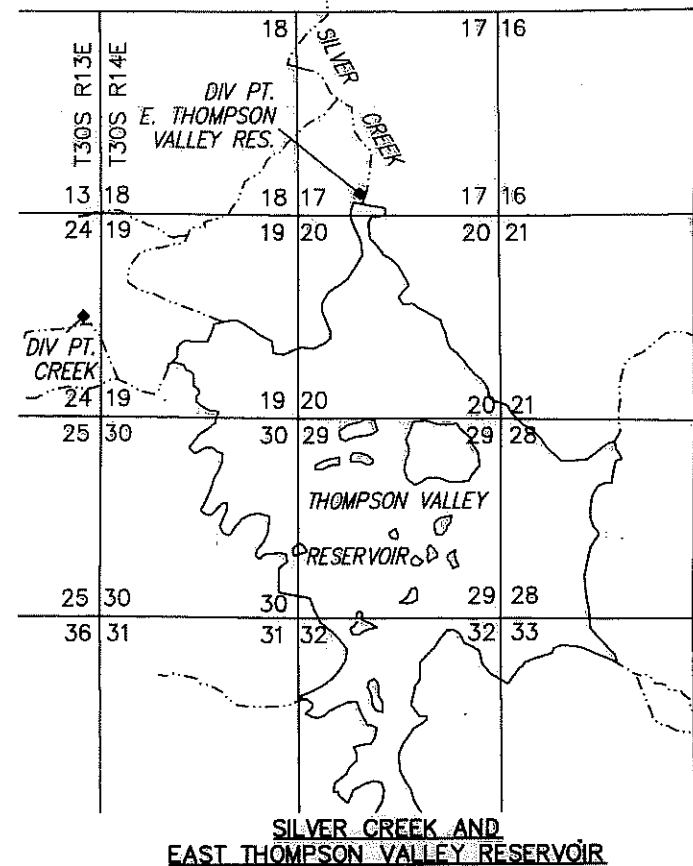
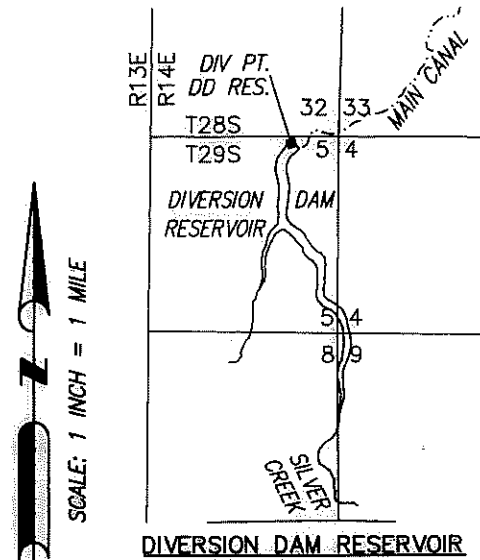
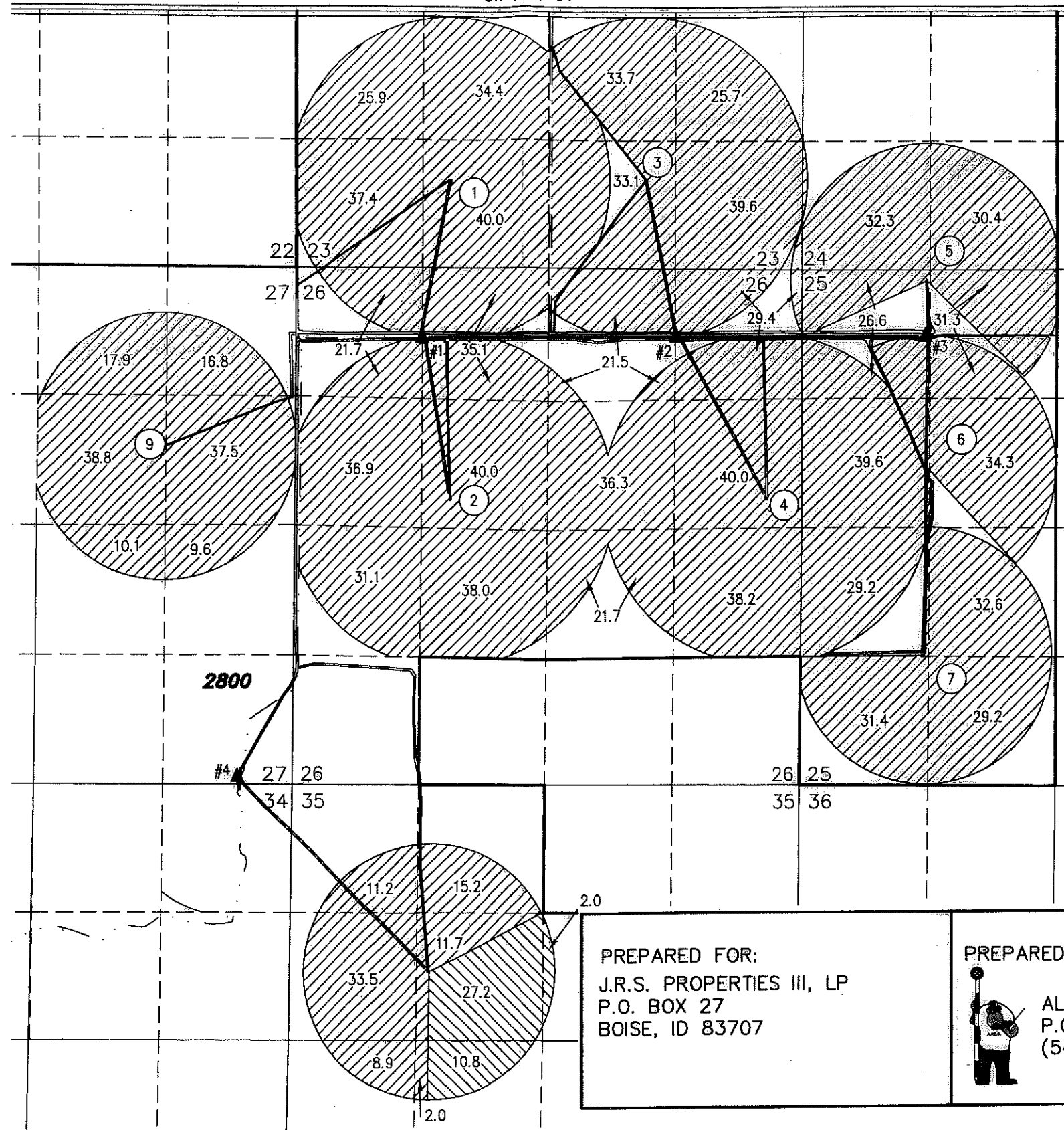
FOR T-11912

SILVER LAKE IRRIGATION DISTRICT

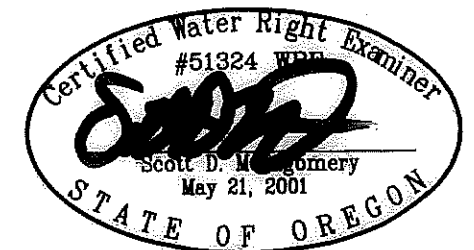
TOWNSHIP 28 SOUTH, RANGE 14 EAST, SECTIONS 23-27 & 35, W.M.

TAX LOT: 2800

OR HWY 31



▲ PUMP STATION



RENEWAL DATE: 12/31/2020

THIS MAP IS FOR THE PURPOSE OF LOCATING A WATER RIGHT ONLY AND HAS NO INTENT TO PROVIDE LEGAL DIMENSIONS OR THE LOCATION OF PROPERTY LINES

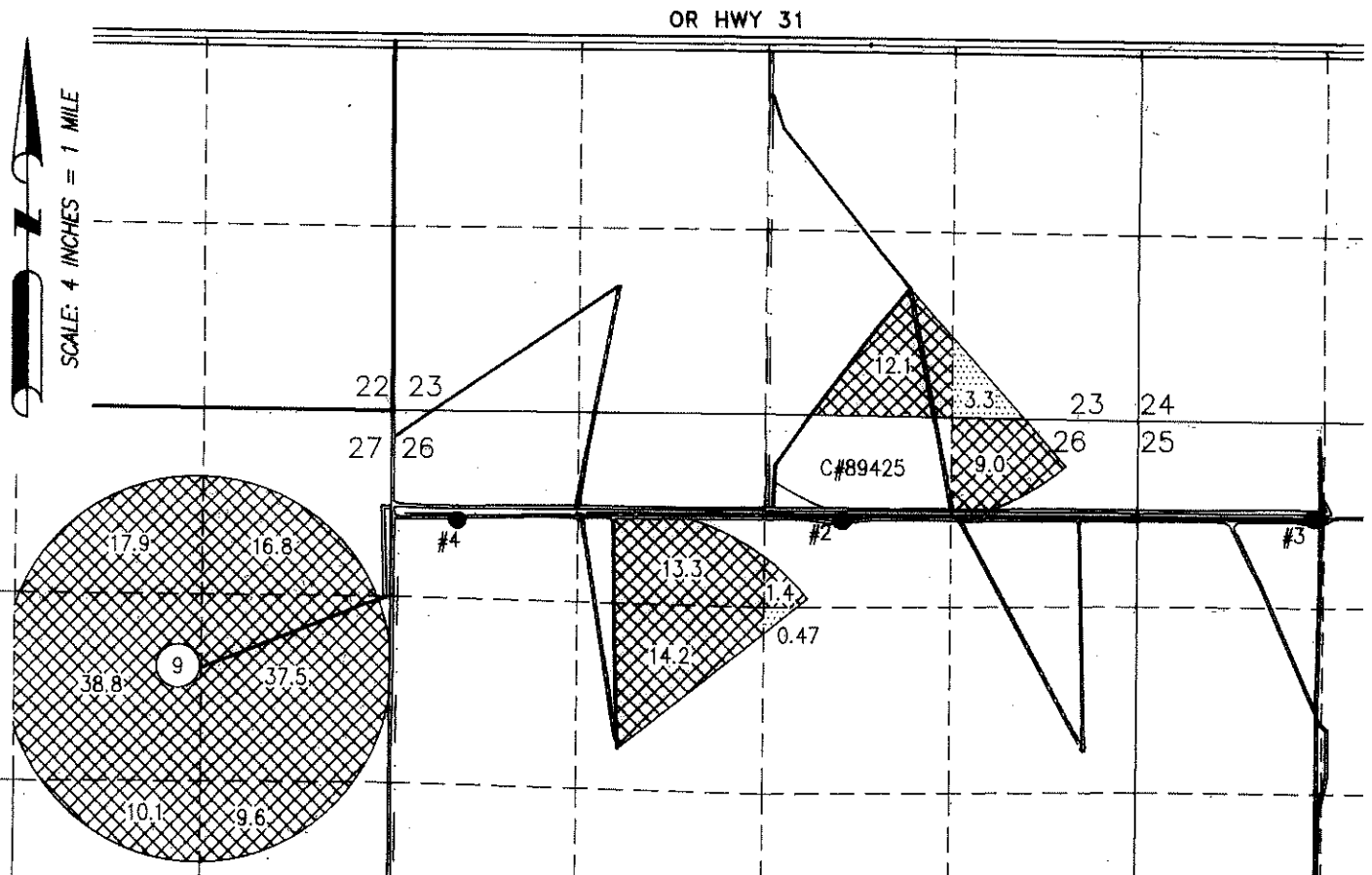
PREPARED FOR:  
J.R.S. PROPERTIES III, LP  
P.O. BOX 27  
BOISE, ID 83707

PREPARED BY:



ALL POINTS ENGINEERING AND SURVEYING, INC.  
P.O. BOX 767  
TERREBONNE, OR 97760  
(541) 548-5833  
www.APEandS.com

CLAIM OF BENEFICIAL USE MAP  
TO ADD A POINT OF APPROPRIATION AND CHANGE PLACE OF USE  
FOR T-11912  
SILVER LAKE IRRIGATION DISTRICT  
TOWNSHIP 28 SOUTH, RANGE 14 EAST, SECTIONS 23-27 & 35, W.M.  
TAX LOT: 2800



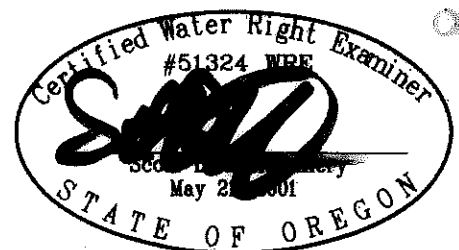
IRRIGATION CANAL

IRRIGATION BURIED PIPING

- WELL #2 (LAKE 4121)  
NW 1/4 NE 1/4 SECTION 26, T28S  
R14E, W.M.; 728 FEET SOUTH AND  
3144 FEET EAST FROM THE NW  
CORNER OF SECTION 26.
- WELL #3 (LAKE 1322/1323/1324)  
NW 1/4 NW 1/4 SECTION 25, T28S  
R14E, W.M.; 688 FEET SOUTH AND  
1166 FEET EAST FROM THE NW  
CORNER OF SECTION 25.
- WELL #4 (LAKE 52995)  
NW 1/4 NW 1/4 SECTION 26, T28S  
R14E, W.M.; 760 FEET SOUTH AND  
470 FEET EAST FROM THE NW  
CORNER OF SECTION 26. FLOW METER  
LOCATED 8 FEET NORTH OF POA.

180.7 ACRES SUPPLEMENTAL  
IRRIGATION FROM G-6669 (C#81395)

3.77 ACRES PRIMARY IRRIGATION FROM  
G-6669 (C#81395) CHANGE TO  
SUPPLEMENTAL



RENEWAL DATE: 12/31/2024

THIS MAP IS FOR THE PURPOSE OF LOCATING  
A WATER RIGHT ONLY AND HAS NO INTENT  
TO PROVIDE LEGAL DIMENSIONS OR THE  
LOCATION OF PROPERTY LINES

PREPARED FOR:  
J.R.S. PROPERTIES III, LP  
P.O. BOX 27  
BOISE, ID 83707

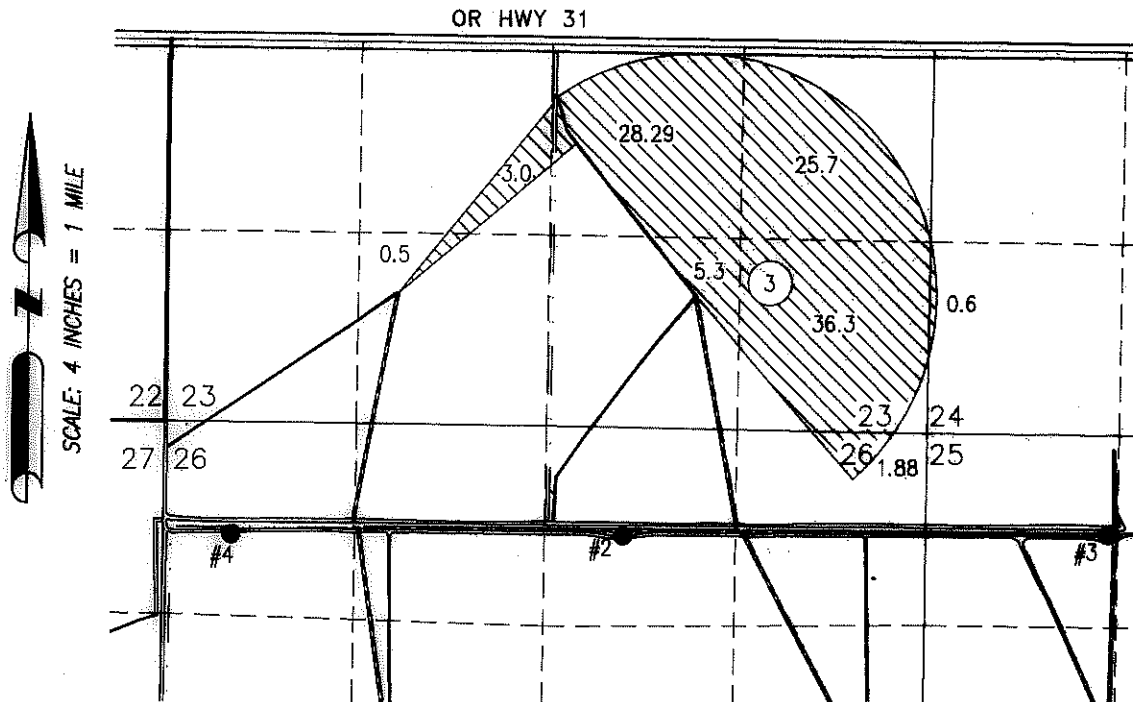
PREPARED BY:



ALL POINTS ENGINEERING AND SURVEYING, INC.  
P.O. BOX 767  
(541) 548-5833  
TERREBONNE, OR 97760  
www.APEandS.com

# CLAIM OF BENEFICIAL USE MAP

TO ADD A POINT OF APPROPRIATION AND CHANGE PLACE OF USE  
FOR T-11912  
SILVER LAKE IRRIGATION DISTRICT  
TOWNSHIP 28 SOUTH, RANGE 14 EAST, SECTIONS 23-27 & 35, W.M.  
TAX LOT: 2800

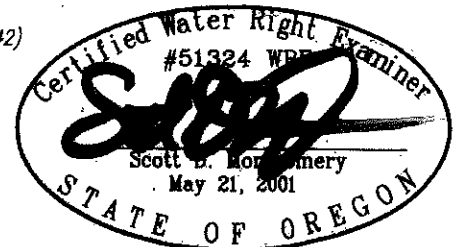


Received  
JUL 29 2024  
QWRD

- WELL #2 (LAKE 4121)  
NW 1/4 NE 1/4 SECTION 26, T28S  
R14E, W.M.; 728 FEET SOUTH AND  
3144 FEET EAST FROM THE NW  
CORNER OF SECTION 26.



101.57 ACRES SUPPLEMENTAL  
IRRIGATION FROM G-6051 (C#76042)



- WELL #3 (LAKE 1322/1323/1324)  
NW 1/4 NW 1/4 SECTION 25, T28S  
R14E, W.M.; 688 FEET SOUTH AND  
1166 FEET EAST FROM THE NW  
CORNER OF SECTION 25.

IRRIGATION CANAL

RENEWAL DATE: 12/31/2024

- WELL #4 (LAKE 52995)  
NW 1/4 NW 1/4 SECTION 26, T28S R14E,  
W.M.; 760 FEET SOUTH AND 470 FEET  
EAST FROM THE NW CORNER OF SECTION  
26. FLOW METER LOCATED 8 FEET  
NORTH OF POA.

IRRIGATION BURIED PIPING

THIS MAP IS FOR THE PURPOSE OF LOCATING  
A WATER RIGHT ONLY AND HAS NO INTENT  
TO PROVIDE LEGAL DIMENSIONS OR THE  
LOCATION OF PROPERTY LINES

PREPARED FOR:  
J.R.S. PROPERTIES III, LP  
P.O. BOX 27  
BOISE, ID 83707

PREPARED BY:



ALL POINTS ENGINEERING AND SURVEYING, INC.  
P.O. BOX 767  
(541) 548-5833  
TERREBONNE, OR 97760  
www.APEandS.com

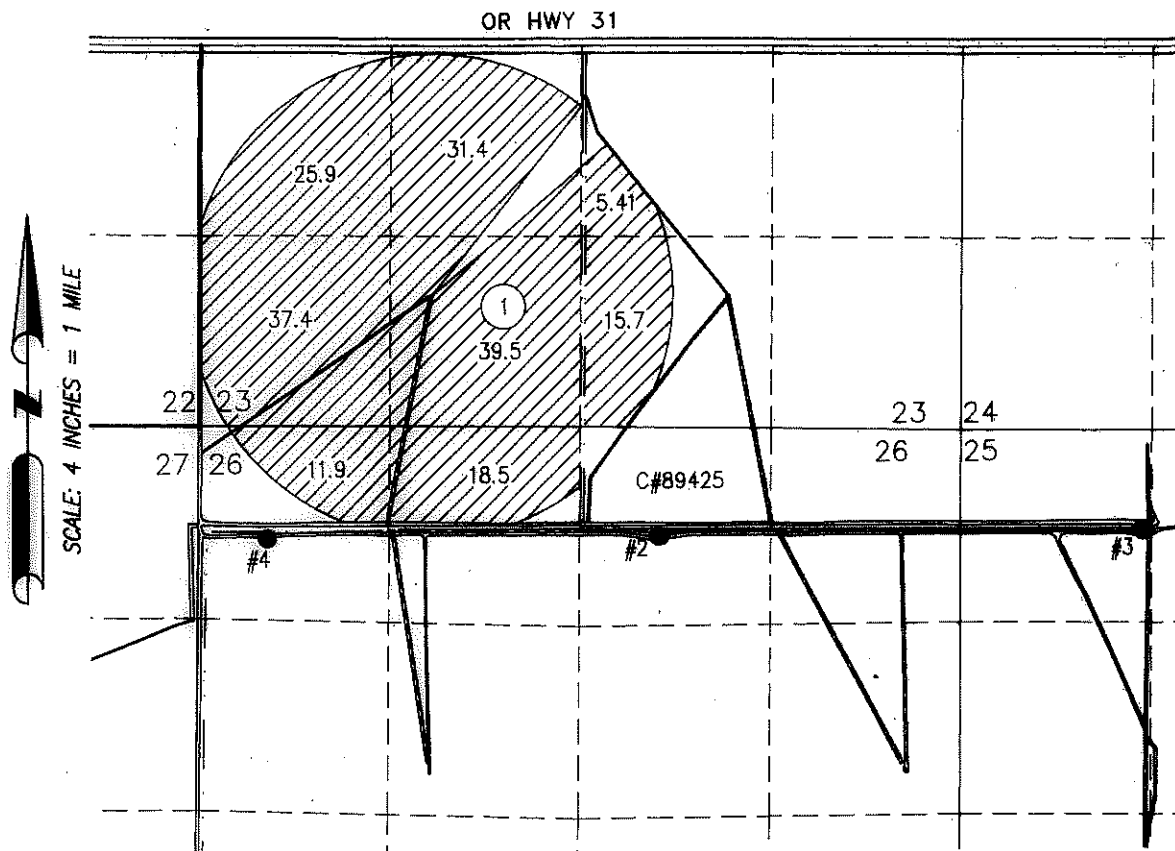
# CLAIM OF BENEFICIAL USE MAP

## TO ADD A POINT OF APPROPRIATION AND CHANGE PLACE OF USE

### FOR T-11912

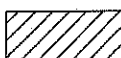
### SILVER LAKE IRRIGATION DISTRICT

TOWNSHIP 28 SOUTH, RANGE 14 EAST, SECTIONS 23-27 & 35, W.M.  
TAX LOT: 2800



Received  
JUL 29 2024

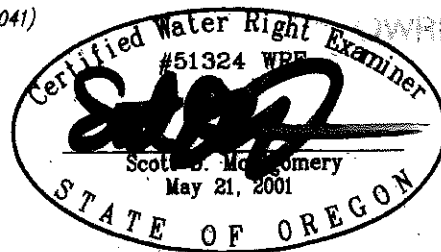
- WELL #2 (LAKE 4121)  
NW 1/4 NE 1/4 SECTION 26, T28S  
R14E, W.M.; 728 FEET SOUTH AND  
3144 FEET EAST FROM THE NW  
CORNER OF SECTION 26.



185.71 ACRES SUPPLEMENTAL  
IRRIGATION FROM G-8121 (C#76041)

- WELL #3 (LAKE 1322/1323/1324)  
NW 1/4 NW 1/4 SECTION 25, T28S  
R14E, W.M.; 688 FEET SOUTH AND  
1166 FEET EAST FROM THE NW  
CORNER OF SECTION 25.

IRRIGATION CANAL



RENEWAL DATE: 12/31/2024

- WELL #4 (LAKE 52995)  
NW 1/4 NW 1/4 SECTION 26, T28S  
R14E, W.M.; 760 FEET SOUTH AND 470  
FEET EAST FROM THE NW CORNER OF  
SECTION 26. FLOW METER LOCATED 8  
FEET NORTH OF POA.

IRRIGATION BURIED PIPING

THIS MAP IS FOR THE PURPOSE OF LOCATING  
A WATER RIGHT ONLY AND HAS NO INTENT  
TO PROVIDE LEGAL DIMENSIONS OR THE  
LOCATION OF PROPERTY LINES

PREPARED FOR:

J.R.S. PROPERTIES III, LP  
P.O. BOX 27  
BOISE, ID 83707

PREPARED BY:



ALL POINTS ENGINEERING AND SURVEYING, INC.  
P.O. BOX 767  
(541) 548-5833  
TERREBONNE, OR 97760  
www.APEandS.com