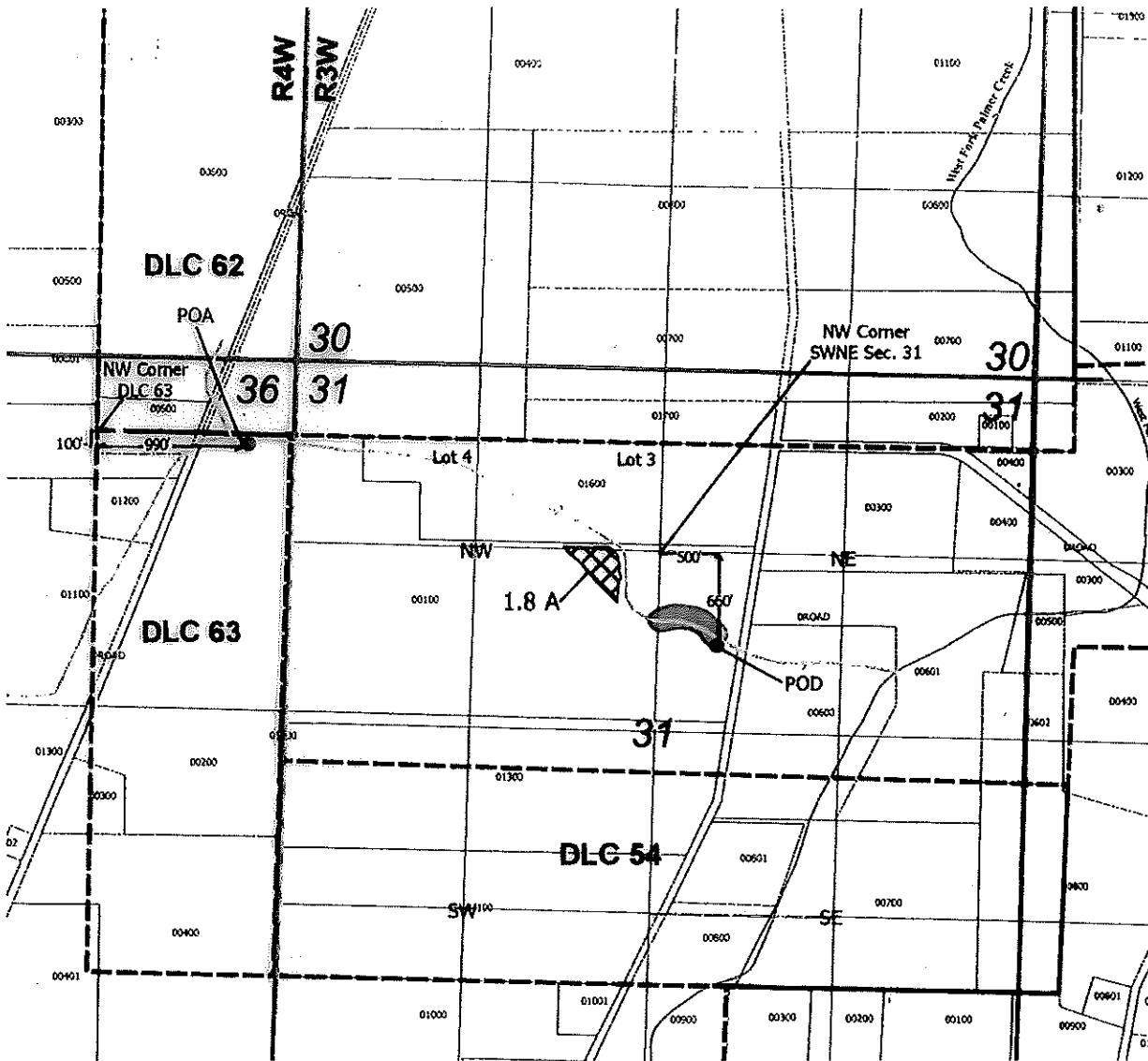


RECEIVED

MAR 02 2020

OWRD

T-12896
T4S, R3W WM, Section 31
Transfer T-12896
Yamhill County, Oregon



Primary POD: 660'S and 500' E from NW corner of SWNE Section 31
Supplemental POA: 100'S and 990' E from the NW corner of DLC 63

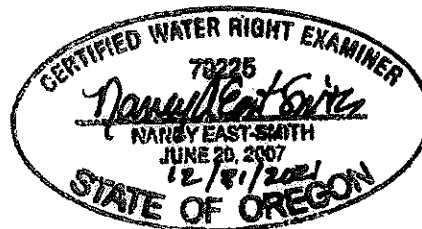
0 330 660 990 1320 ft



1 inch = 1,320 feet

Explanation

- Point of Diversion (POD)
- Point of Appropriation (POA)
- Place of use Primary Irrigation (1.8 acres)
- Place of use Supplemental Irrigation (1.8 acres)
- Streams
- Roads
- Donation Land Claims
- County Tax Lots



HAD 1963 HAAR
Datum of 1963
Prepared November 18th, 2019

Sources: BLM CadNSDI PLSS, roads, county lines & tax lots (Pacific Hydro-Geology), Oregon Spatial Data Library water features, DLC lines, et al.
This map was prepared for the purpose of identifying the location of a water right only and is not intended to provide legal dimensions or locations of a property.