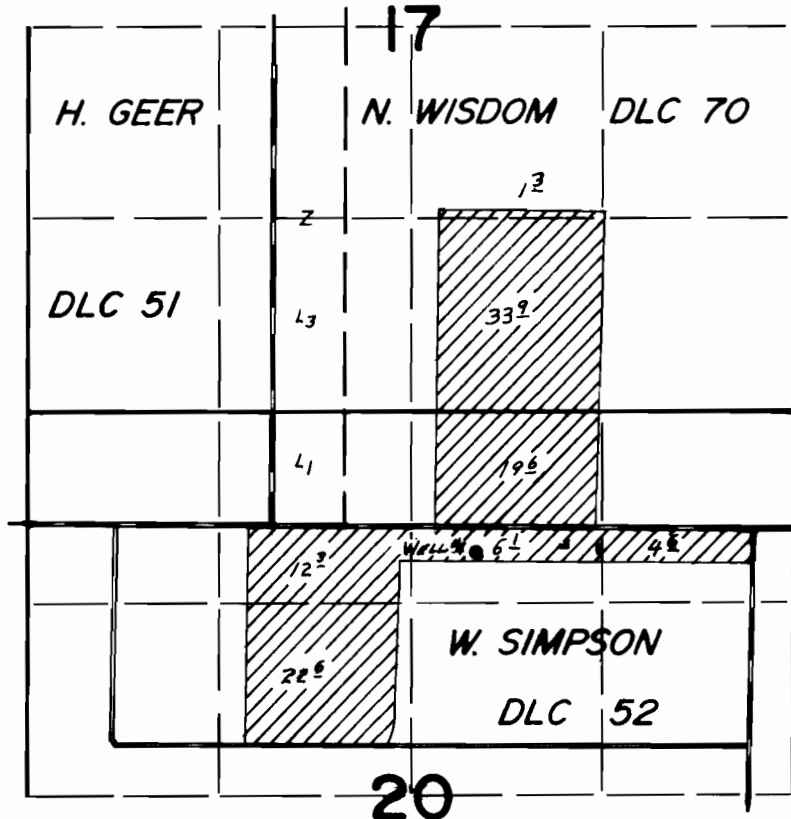


T.8S. R.1W., W.M.



Well # 6 Loc. 180'S. & 1400' E. FROM S.E. COR. DLC 51

FINAL PROOF SURVEY UNDER

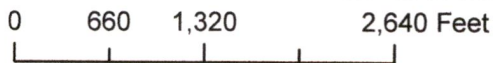
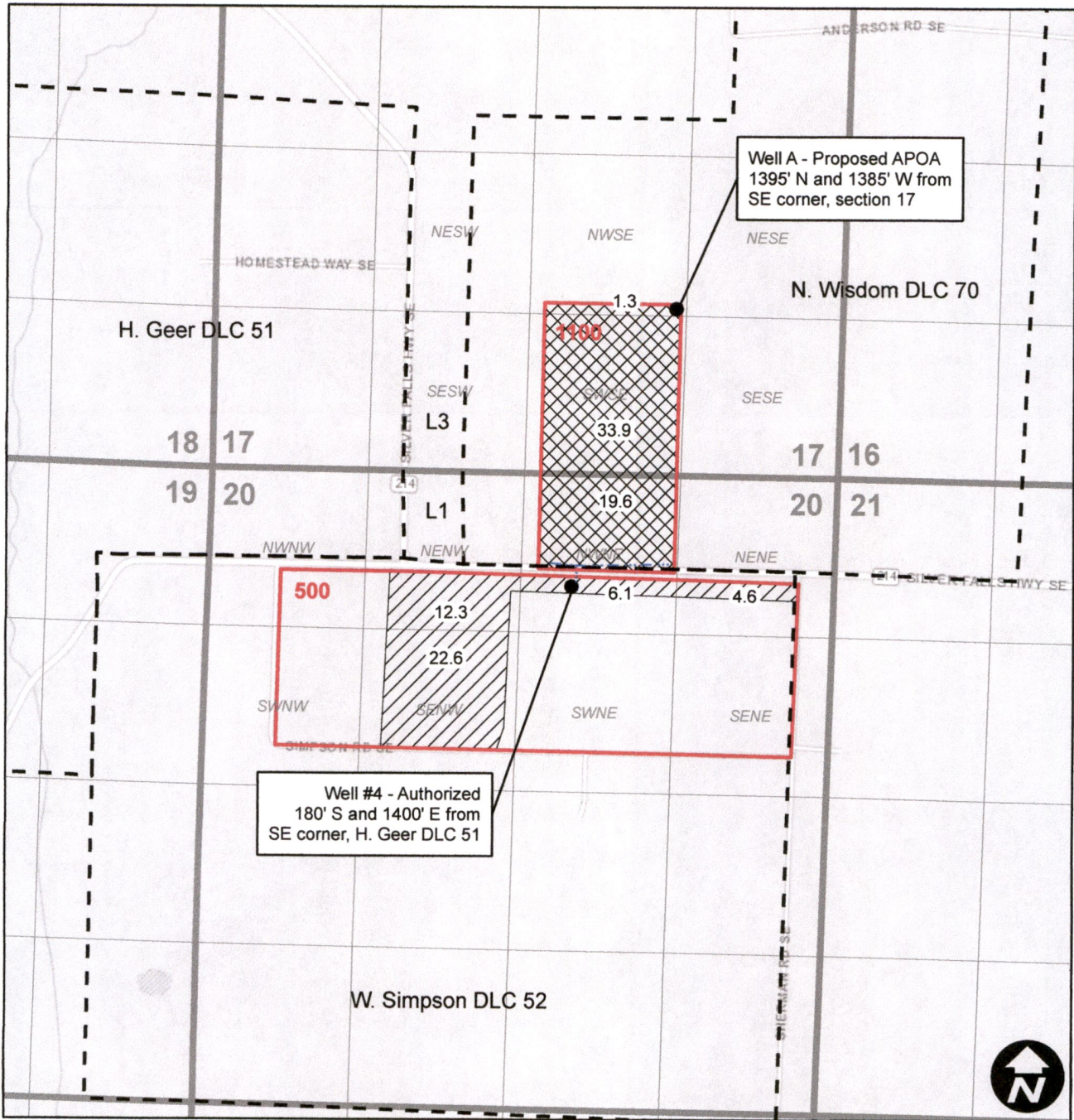
Application No. G-6212.. Permit No. G-5870.....
IN NAME OF

.....*DELS FARMS, INC.*.....

Surveyed MAY 29 1979, by L. H. NUNN.....

Transfer Application - Beggs

Township 8S, Range 1W, W.M.



Legend

- Cert. 56439 No Change
- Cert. 56439 Change POA
- Mainline
- Taxlots
- DLC



EXPIRES: 12-31-2024

Received by OWRD

OCT 01 2024

Salem, OR