

- LEGEND**
- Points of Appropriation (POA)
  - ▨ Place of Use (POU)
  - ⊠ Remote Flow Meter
  - Tax Lots
  - System Mainlines
- Hydrology**
- Perennial
  - - - Intermittent

**POD Location Description**

**Well 1 (CLAC 5615):** Located 525 feet South and 2165 feet East from the NW corner of Section 7 (NENW), Township 2 South, Range 4 East (WM).

**Well 2 (CLAC 5593):** Located 535 feet South and 2335 feet East from the NW corner of Section 7 (NENW), Township 2 South, Range 4 East (WM).

**Well 3 (CLAC 5591):** Located 810 feet South and 2610 feet East from the NW corner of Section 7 (NENW), Township 2 South, Range 4 East (WM).

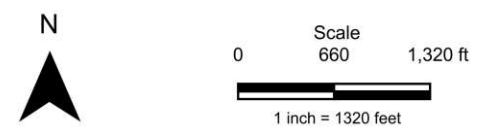
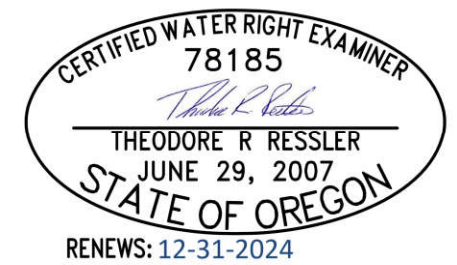
**Well 4 (CLAC 5619):** Located 1050 feet South and 1460 feet East from the NW corner of Section 8 (NENW), Township 2 South, Range 4 East (WM).

**Well 5 (CLAC 5639):** Located 2600 feet South and 2350 feet East from the NW corner of Section 8 (SENE), Township 2 South, Range 4 East (WM).

**Well 7 (CLAC 68983):** Located 60 feet South and 2600 feet East from the NW corner of Section 7 (NENW), Township 2 South, Range 4 East (WM).

**Well 8 (CLAC 5622):** Located 1360 feet South and 2330 feet West from the NE corner of Section 8 (SWNE), Township 2 South, Range 4 East (WM).

**Well 9 (CLAC 78512):** Located 105 feet South and 640 feet West from the NE corner of Section 7 (NENE), Township 2 South, Range 4 East (WM).



Date: 12/16/2024  
 Data Sources: BLM, OWRD, USGS, Clackamas Co.  
 Disclaimer: This map is not intended to provide legal dimensions or property ownership lines.

**Claim of Beneficial Use  
 Transfer T-10744**

A Water Right held by Iseli Nursery  
 Township 2 South, Range 3 & 4 East  
 Clackamas County

