

SW 1/4 - NW 1/4 - SECTION 16
T. 28 S., R. 14 W., W.M.
COOS COUNTY, OREGON



SCALE: 1" = 300'

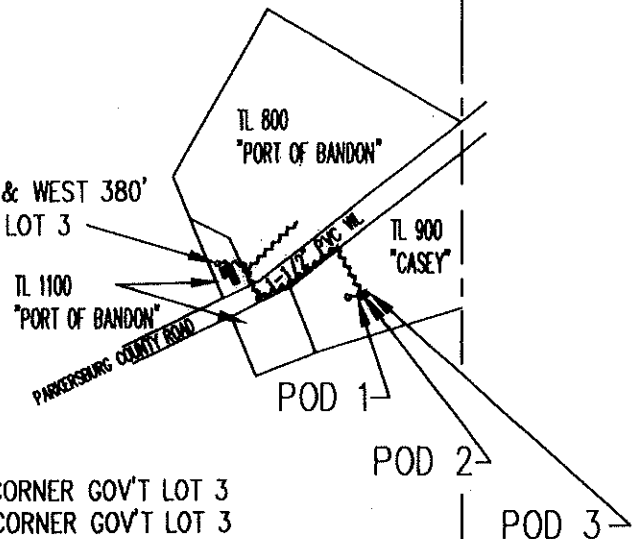
TAX LOTS PER TAX MAP
28 14 16 BC [06-11-2019]

NW 1/4 - NW 1/4

SW 1/4 - NW 1/4

NE CORNER
GOV'T LOT 3

METER LOCATED SOUTH 595' & WEST 380'
FROM THE NE CORNER GOV'T LOT 3



POD 1: LOCATED SOUTH 648' & WEST 157' FROM THE NE CORNER GOV'T LOT 3
POD 2: LOCATED SOUTH 645' & WEST 152' FROM THE NE CORNER GOV'T LOT 3
POD 3: LOCATED SOUTH 641' & WEST 146' FROM THE NE CORNER GOV'T LOT 3

RECEIVED

JUN 26 2019

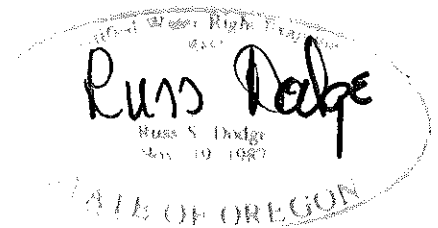
OWRD

FINAL PROOF SURVEY

APPLICATION NO S-85371

PERMIT NO. S-53945

JUNE 11, 2019



LEGEND

NOTE (2): THIS MAP WAS PREPARED FOR THE PURPOSE OF IDENTIFYING THE LOCATION OF A WATER RIGHT ONLY AND IS NOT INTENDED TO PROVIDE LEGAL DIMENSIONS OR LOCATION OF PROPERTY OWNERSHIP LINES.

- COLLECTION GALLERY
- DISTRIBUTION TO RESERVOIRS
- ABOVE THE GROUND PVC RESERVOIR

- LAWN AND GARDEN IRRIGATED AREAS
- COMMERCIAL/INDUSTRIAL USE AREAS
- HOME SITE