

# CLAIM OF BENEFICIAL USE

RECEIVED

TRANSFER T-12924

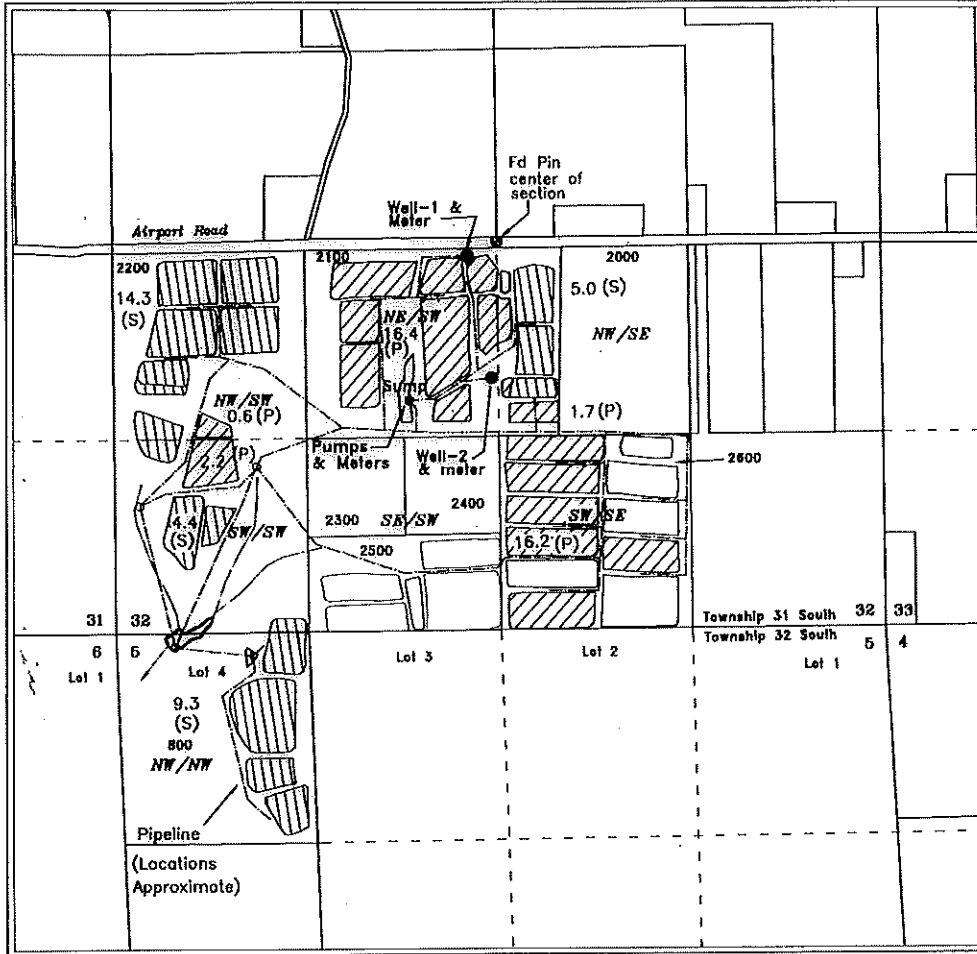
FEB 18 2021

IN THE NAME OF BLANCO BOGS

SECTION 32, TOWNSHIP 31 SOUTH, RANGE 15 WEST, W.M. OWRD  
AND

SECTION 5, TOWNSHIP 32 SOUTH, RANGE 15 WEST, W.M.

CURRY COUNTY OREGON




Scale  
1 inch = 1320 feet


Legend

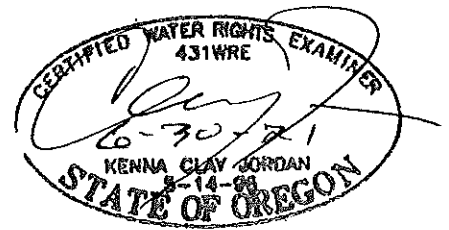
WELL-1 - NE/SW, SECTION 32, 2560 FEET NORTH & 2430 FEET EAST  
SUMP (Pump & Meter) - NE/SW, SECTION 32, 1600 FEET NORTH & 2015 FEET EAST  
BOTH FROM THE SW CORNER OF SECTION 32

**Additional POA**

WELL-2 - NE/SW, SECTION 32, 1735 FEET NORTH & 2570 FEET EAST  
FROM THE SW CORNER OF SECTION 32

 (P) Primary Cranberry Operations - 37.1 Acres

 (S) Supplemental Cranberry Operations - 33.0 Acres



This map is not intended to provide legal dimensions or locations of property ownership lines

Base map from Curry County GIS over 5/1/15  
Google aerial photo and 2005 FSA  
aerial photo for assumed best fit and adjusted to  
closely fit previous COBU and Final Proof Survey maps.  
Orientation adjusted to recorded survey 31-73

JORDAN ENGINEERING  
460 JORDAN LANE  
ROSEBURG, OR 97471  
(541) 673-1931

2/2/2021 - ned