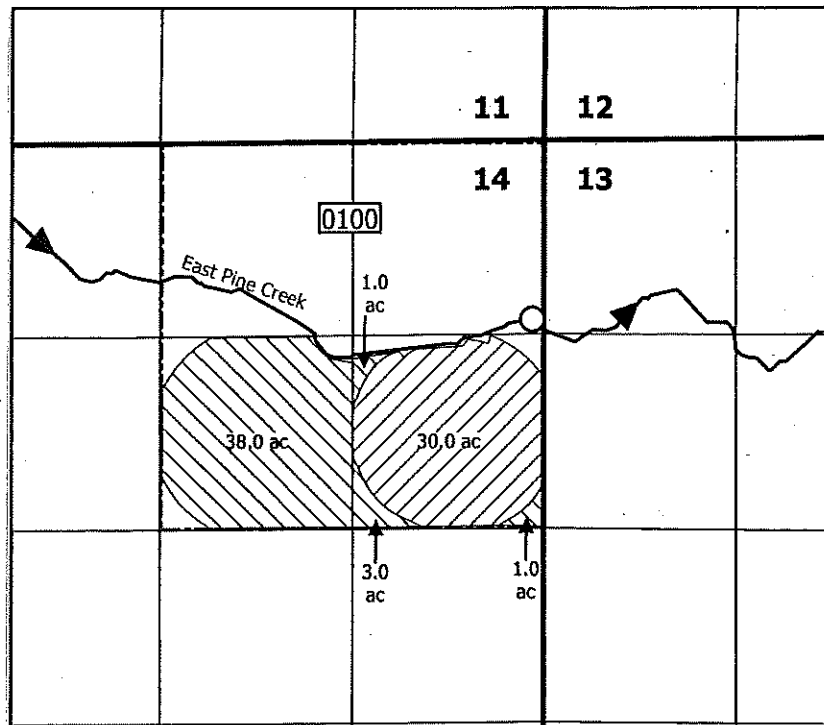


RECEIVED

NOV 21 2022

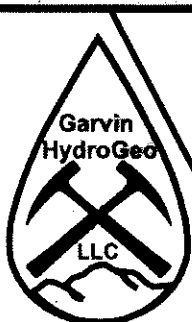
QWRD

**T8S R46E WM**



**LEGEND**

- Additional Point of Diversion (Armacost Pump POD)
- ▨ Place of Use (priority date 12/31/1877)
- ▩ (Place of Use priority date 12/31/1879)
- Baker County Taxlot Boundary 0100



**Claim of Beneficial Use Map  
Additional POD  
Transfer T-12861  
Baker County, OR**

Prepared on behalf of Armacost Investments LLP

1 Inch = 1,320 feet



Date: 10/25/22  
Drawn by: Paul F. Garvin

**Note:**

This map is not intended to provide legal dimensions or locations of property ownership lines.

Armacost Pump POD: 1,240 ft S and 94 ft W from the NE corner of Section 14

Approved fish screening is located at the Armacost Pump POD

Flow measurement device is located within a 20 ft radius of the Armacost Pump POD