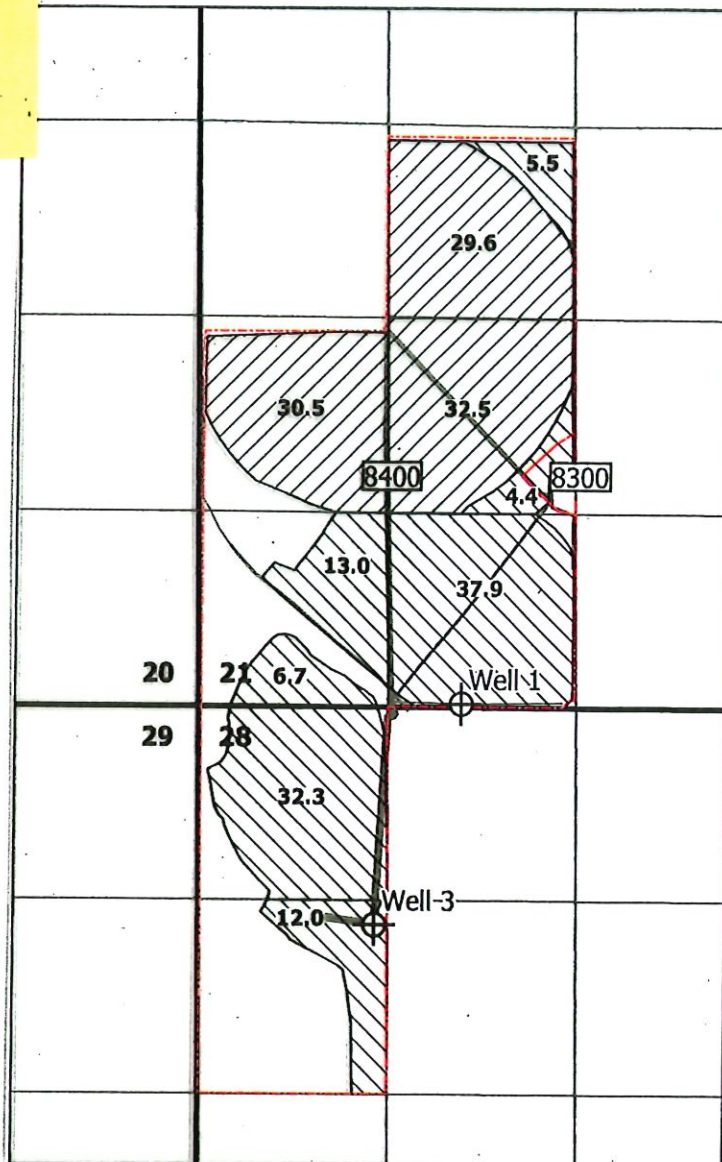


Received
DEC 13 2024
OWRD

T 17S, R 44E, WM



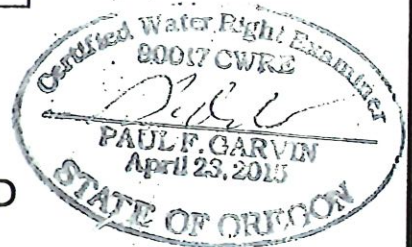
Notes:

This map is not intended to provide legal dimensions or locations of property ownership lines.

Well 1 (MALH 53561) is 1,820' E and 30' N from the the SW corner of Section 21

Well 3 (MALH 54215) is 1,212' E and 1,502' S of the the NW corner of Section 28

Flow measurement devices are located within 10 feet of each point of diversion



LEGEND

Primary

Supplemental

Malheur County Taxlot Boundary [8300]

12" PVC Mainline

10" PVC Mainline

8" PVC Mainline

6" PVC Mainline

4" PVC Mainline

Garvin
HydroGeo
LLC

**Claim of Beneficial Use Map
Application G-17885, Permit G-17556
Malheur County, OR**

Prepared on behalf of Walton Farms

1 inch = 1,320 feet



Drawn by: Paul F. Garvin, RG, CWRE
Date: 3/2/22