

FINAL PROOF SURVEY MAP
IN THE NAME OF SAFARI GAME SEARCH FOUNDATION, INC.

APPLICATION R-69465
S-69491

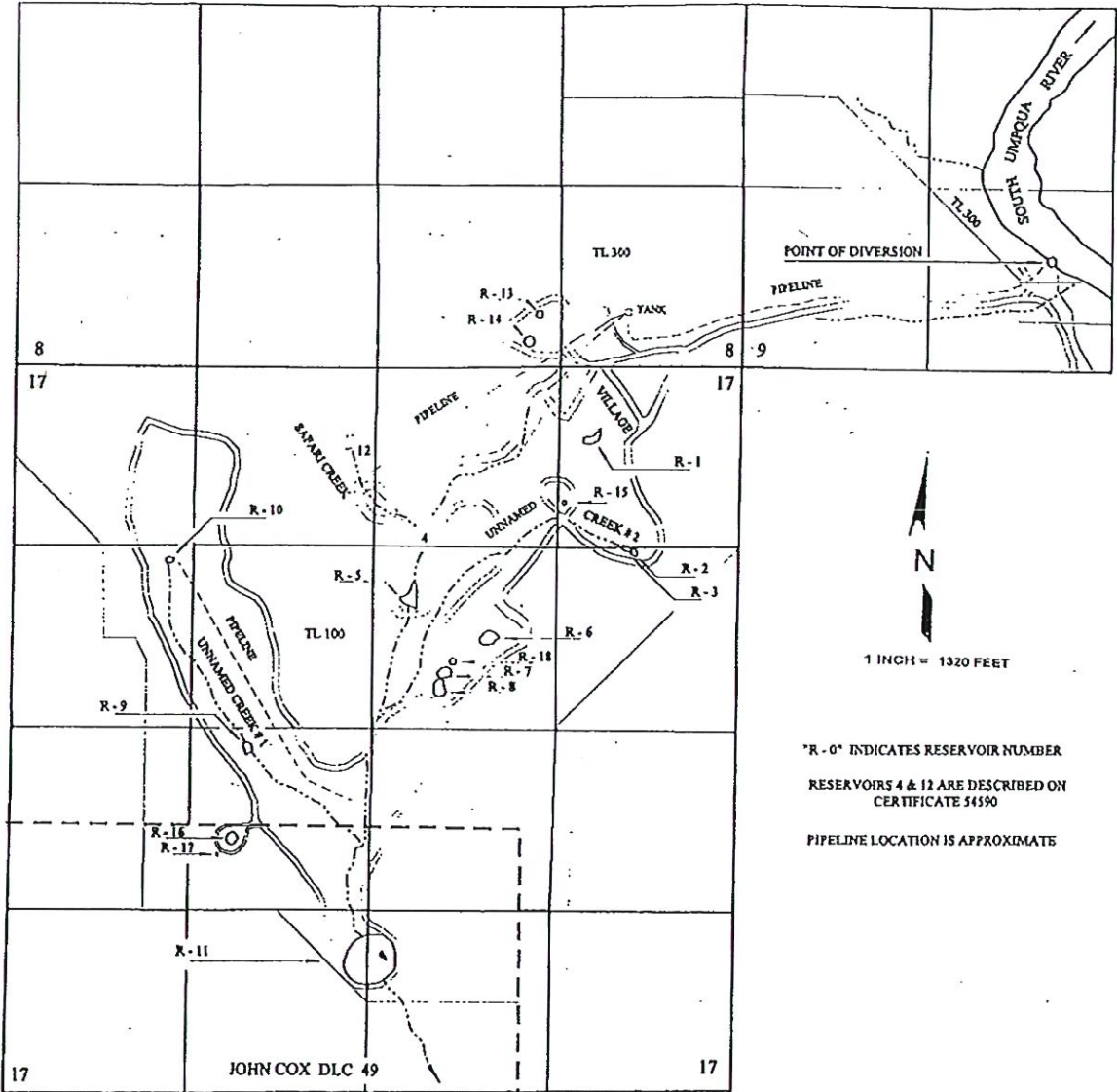
PERMIT R-12038
52925

RECEIVED

SEP 05 2000

WATER RESOURCES DEPT.
SALEM, OREGON

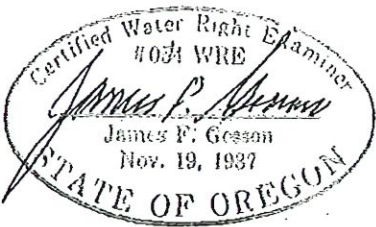
SECTIONS 8, 9 & 17, TOWNSHIP 28 SOUTH, RANGE 6 WEST, W.M.



R - 0 INDICATES RESERVOIR NUMBER
RESERVOIRS 4 & 12 ARE DESCRIBED ON
CERTIFICATE 54590
PIPELINE LOCATION IS APPROXIMATE

Reservoir	Source	North or South	East or West	¼ ¼ Section	Section
R - 1	South Umpqua River	550 S	1060 W	NE¼NE¼	17
R - 2	South Umpqua River	1360 S	780 W	SE¼NE¼	17
R - 3	South Umpqua River	1310 S	840 W	NE¼NE¼	17
R - 5	Safari Creek	1750 S	2380 W	SW¼NE¼	17
R - 6	South Umpqua River	1190 S	1800 W	SW¼NE¼	17
R - 7	South Umpqua River	2250 S	2100 W	SW¼NE¼	17
R - 8	South Umpqua River	2350 S	2150 W	SW¼NE¼	17
R - 9	Unnamed Creek # 1	2830 S	3510 W	NE¼SW¼	17
R - 10	Unnamed Creek # 1	1450 S	4120 W	SW¼NW¼	17
R - 11	Safari Creek	4470 S	2530 W	SW¼SE¼	17
R - 13	South Umpqua River	360 N	1460 W	SW¼SE¼	8
R - 14	South Umpqua River	165 N	1540 W	SW¼SE¼	8
R - 15	South Umpqua River	990 S	1270 W	NE¼NE¼	17
R - 16	South Umpqua River	3440 S	3640 W	NE¼SW¼	17
R - 17	South Umpqua River	3560 S	3750 W	NE¼SW¼	17
R - 18	South Umpqua River	2150 S	2650 W	SW¼NE¼	17

THE SOUTH UMPQUA RIVER POINT OF DIVERSION IS LOCATED 780 FEET NORTH AND 440 FEET WEST FROM THE SOUTH QUARTER CORNER OF SECTION 9, BEING WITHIN THE SE¼ SW¼ OF SECTION 9, TOWNSHIP 28 SOUTH, RANGE 6 WEST, W.M.; DOUGLAS COUNTY.



ALL FROM THE NORTHEAST CORNER OF SECTION 17, TOWNSHIP 28 SOUTH, RANGE 6 WEST, W.M.; DOUGLAS COUNTY.

PURPOSE OF THIS MAP IS TO IDENTIFY THE LOCATION OF THE WATER RIGHT. IT IS NOT INTENDED TO PROVIDE INFORMATION RELATIVE TO THE LOCATION OF PROPERTY OWNERSHIP BOUNDARY LINES.