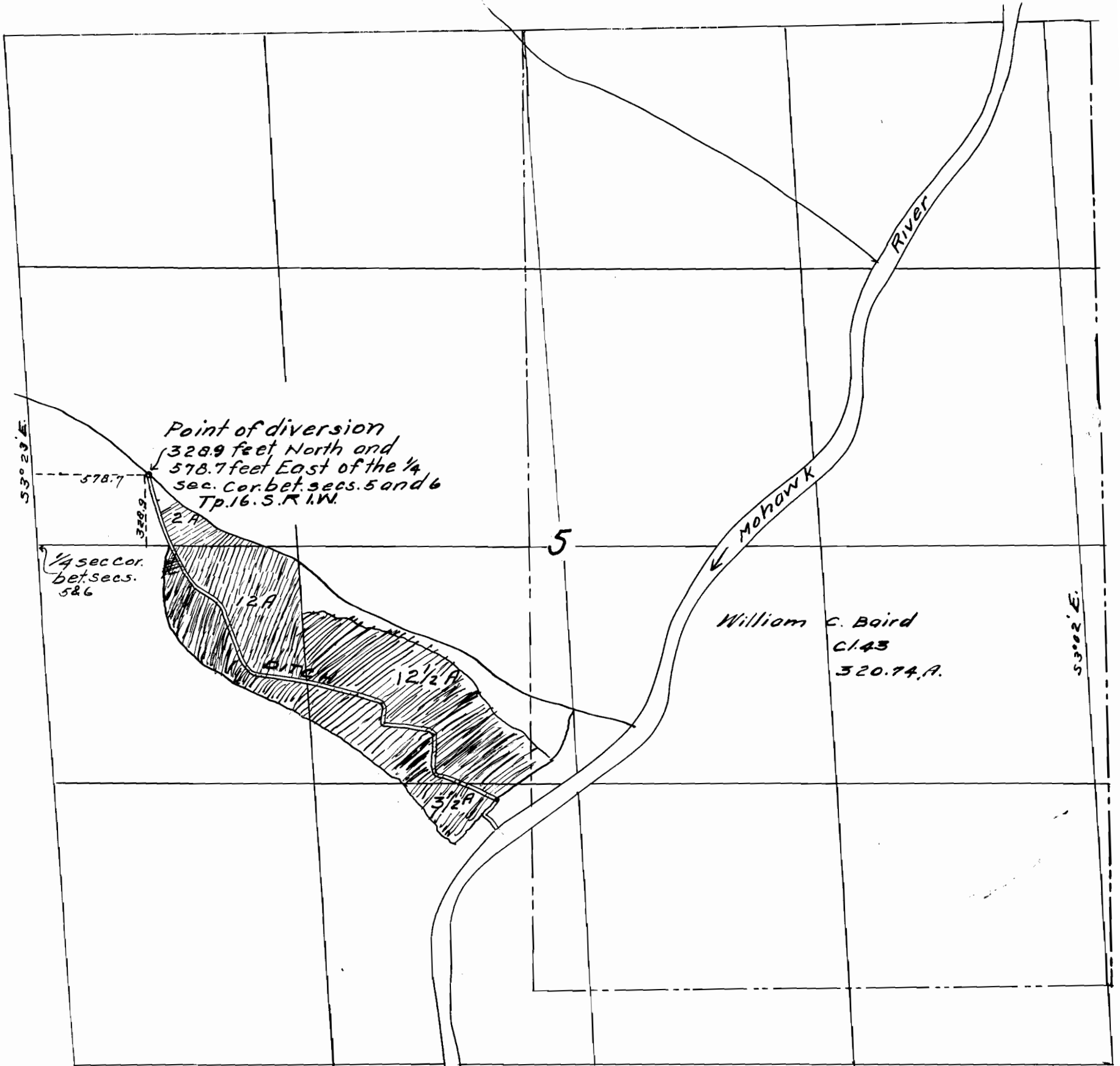


Tp. 16. S. R. 1. W. W.M.

13926  
10019



I, G.H. Waggoner do hereby certify that this map was made from notes taken during an actual survey, made by me, on the 8th day of January 1931, and that it correctly represents the works described in the accompanying application together with the location of streams and other ditches in the immediate vicinity

*G.H. Waggoner*

Registered Professional Engineer, Certificate, Oregon, No. 954,  
Dated Dec. 31st. 1919.