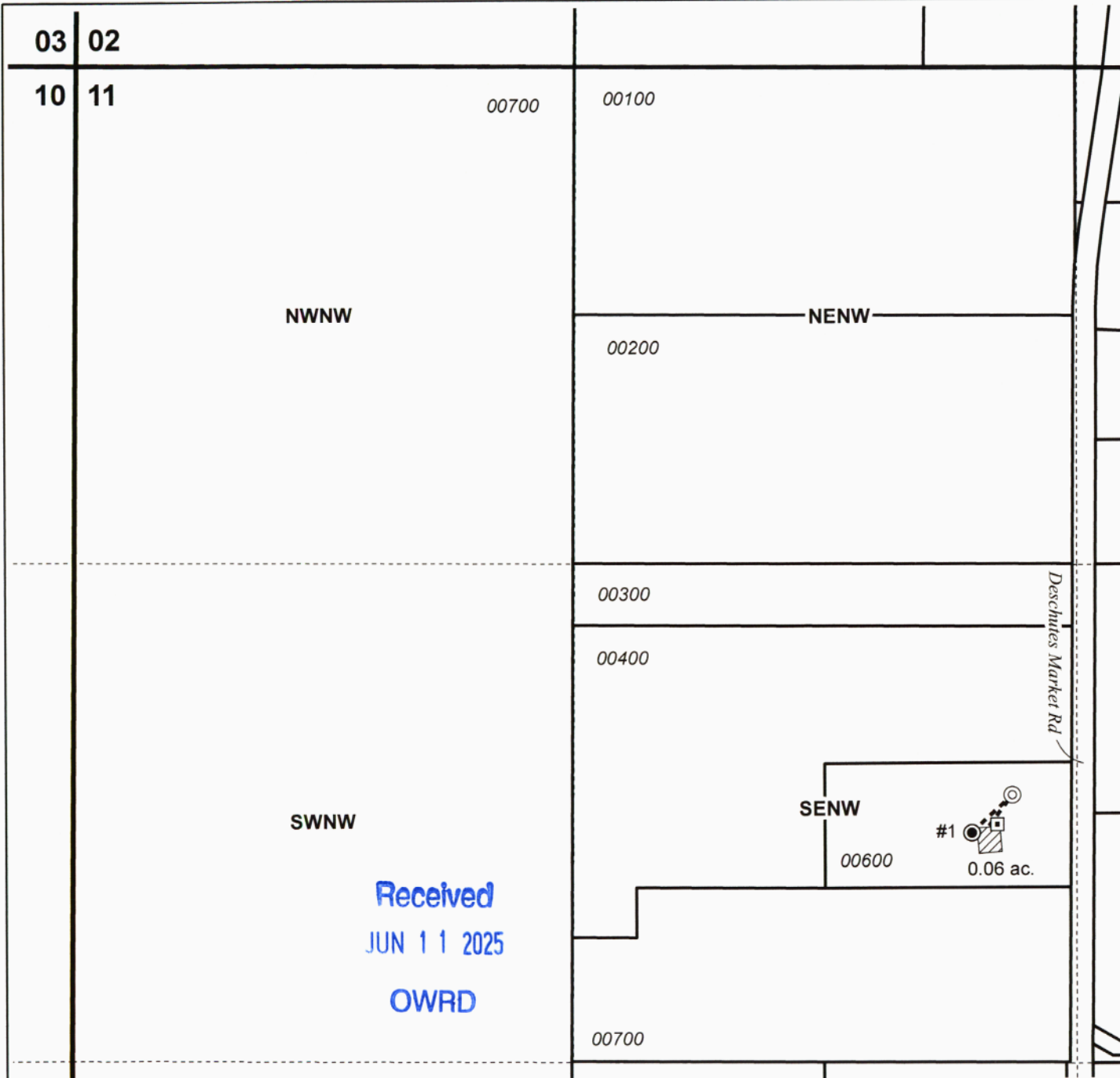


**T17S R12E, WM  
DESCHUTES COUNTY, OR**



1" = 400'

- Well
- Meter
- ⊙ Cistern
- Pipeline
- ▨ POU NU
- ▭ Section
- Quarter Quarter
- ▭ Tax Lot

**Well #1 Location:**  
(DESC 57132/L-78621):  
610' N, 270' W of Cen 1/4 Cor Sec 11

Received  
JUN 11 2025  
OWRD



**BENEFICIAL USE CLAIM MAP**  
**Crystal Canopy Cultivators, LLC**

This map is not intended  
to provide legal dimensions  
or locations of property  
ownership lines.

**WATER RIGHT SERVICES, LLC**  
PO BOX 1830, BEND, OR 97709  
[WWW.OREGONWATER.US](http://WWW.OREGONWATER.US) CCB # 197121  
johnshort@usa.com 541-389-2837