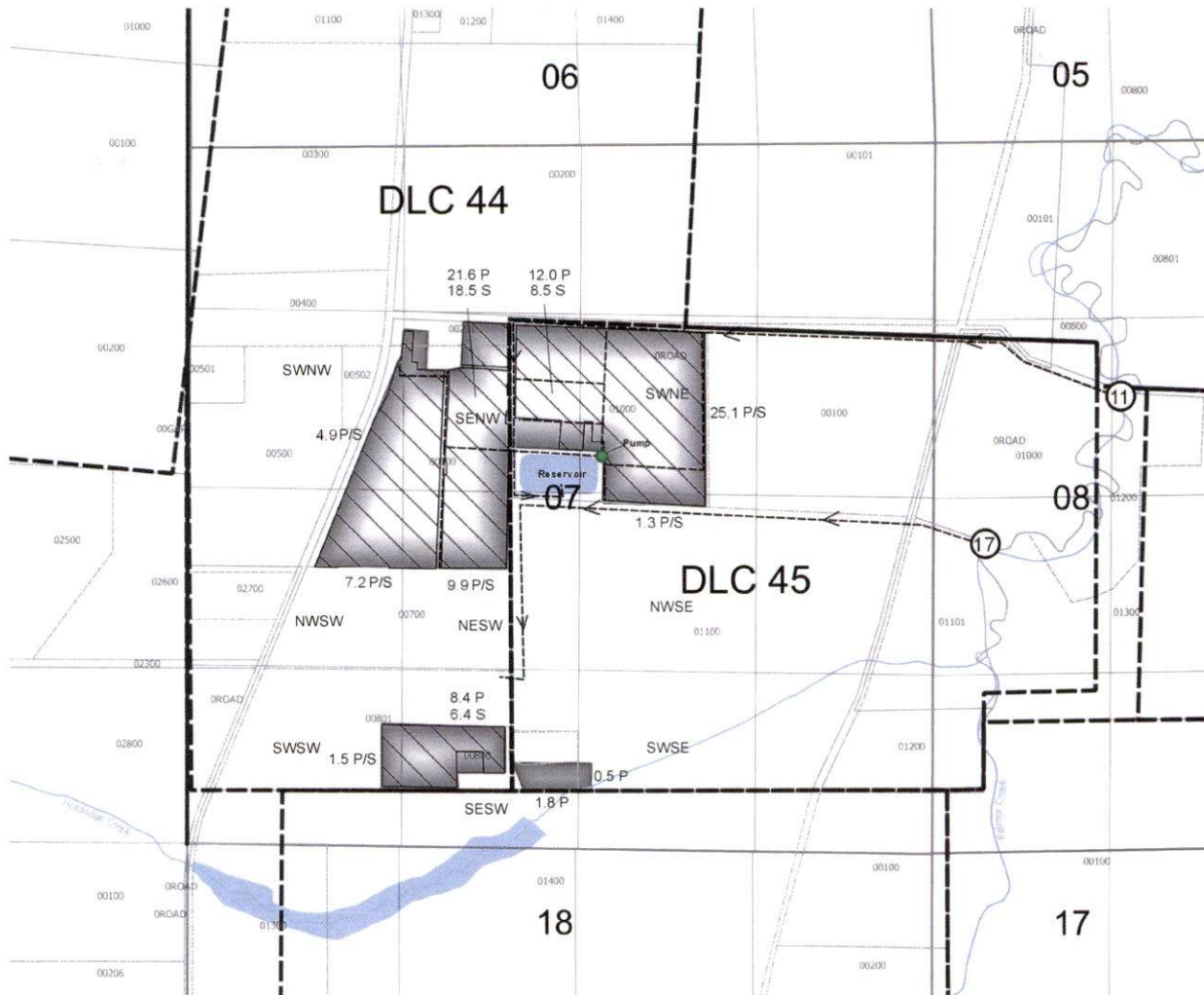


Received  
 NOV 12 2025  
 OWRD

T5S, R3W WM, Section 7  
 Yamhill County, Oregon  
 Application S-72668 Permit S-54757



**Explanation**

- Rediversion (11 and 17)
- Mainline to Place of Use
- Nursery Operations (Primary = 94.2 Acres)
- Irrigation (Supplemental = 83.5 Acres)
- Donation Land Claim
- County Tax Lots
- Roads
- Streams



NAD 1983 HARN  
 Datum of 1983  
 Prepared August 22, 2019

Sources: BLM CadNDSI PLSS, roads, county lines & tax lots (Pacific Hydro-Geology), Oregon Spatial Data Library water features, DLC lines, et al.

This map was prepared for the purpose of identifying the location of a water right only and is not intended to provide legal dimensions or locations of a property.

Note: Revised to include Nursery Operations acres, November 3, 2025.

0 330 660 990 1320 ft



1 inch = 1,320 feet

