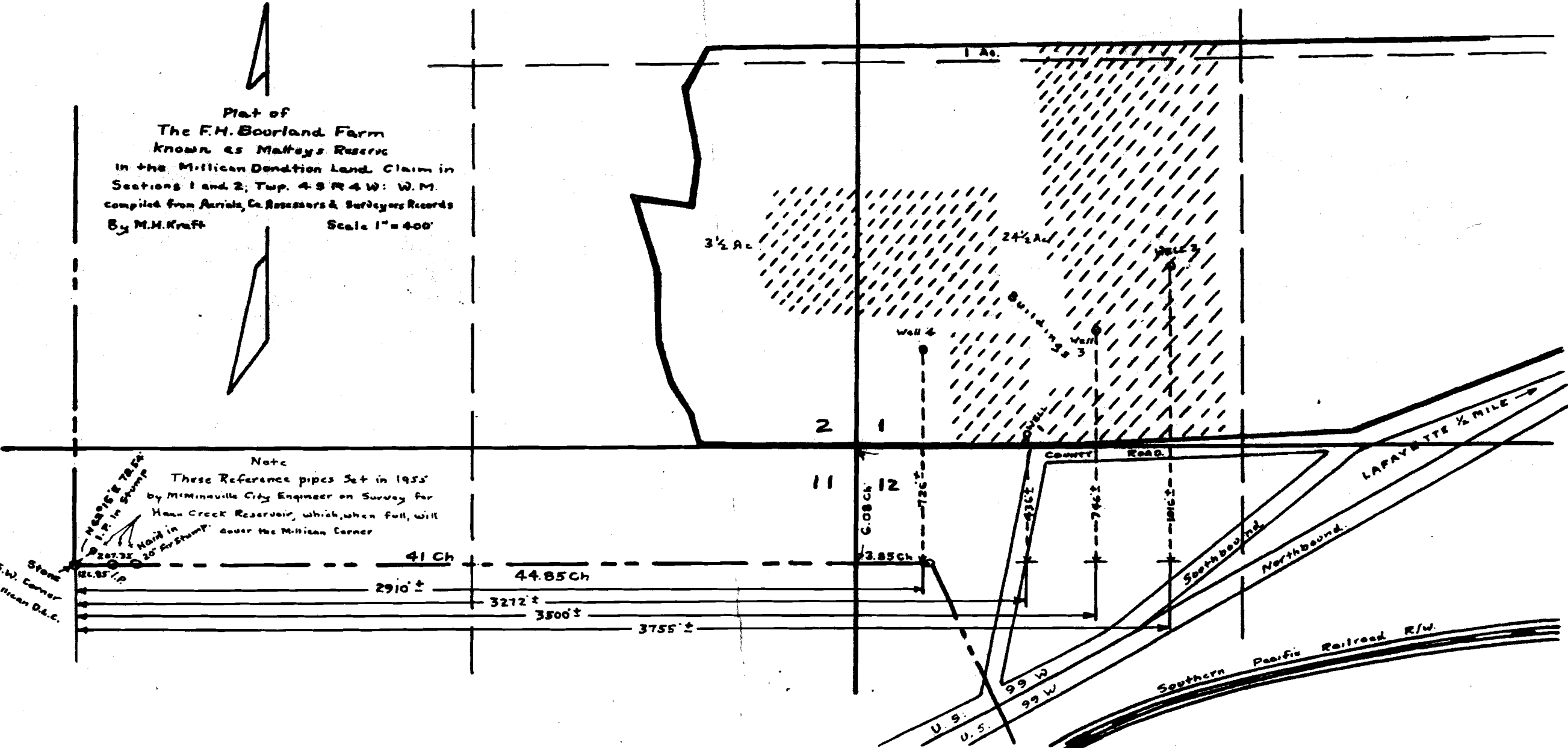


GR

GR-112

Plat of  
 The F.H. Bourland Farm  
 known as Matveys Reserve  
 in the Millican Donation Land Claim in  
 Sections 1 and 2, Twp. 4 S R. 4 W: W.M.  
 compiled from Aerial, Co. Assessors & Surveyors Records  
 By M.H. Kraft      Scale 1" = 400'



Note  
 These Reference pipes Set in 1955  
 by Minnville City Engineer on Survey for  
 Hawn Creek Reservoir, which, when full, will  
 cover the Millican Corner

11.916 ± to 52.54  
 1.2 ± in ground  
 207.35  
 12.85 ±  
 S.W. Corner  
 Millican D.L.C.

LAFAYETTE 1/2 MILE →  
 Southbound  
 Northbound  
 Southern Pacific Railroad R/W