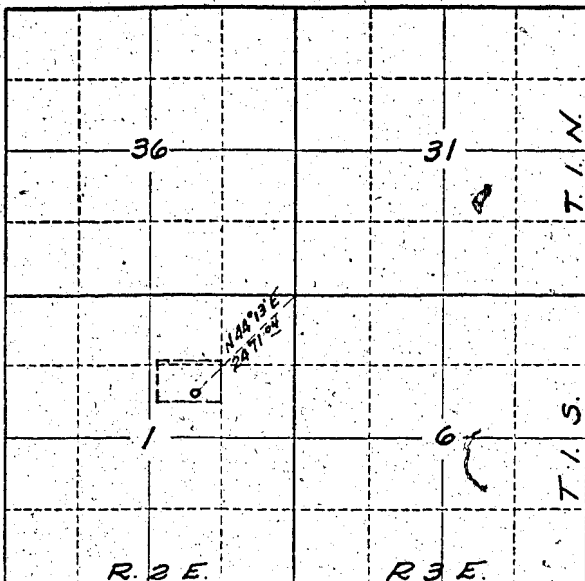


Township 1 S Range 2 E, W.M.  
North



Locate well and acreage of irrigated land on plat.

Scale: 2" = 1 Mile

STATE OF OREGON

County of Multnomah

} ss.

I, Jack C. Knierim, Secretary, being first duly sworn, do hereby certify that I have read the foregoing Registration Statement and that all of the items therein contained are true to the best of my knowledge and belief.

Oregon Asphaltic Paving Company

By Jack C. Knierim Secretary

(Signature of Registrant)

Subscribed and sworn to before me this 5th day of March, 19 58

My commission expires Mar 26 1959

(Notary Public)

(SEAL)

### CERTIFICATE OF REGISTRATION

STATE OF OREGON

County of Marion

} ss.

This is to certify that the foregoing Registration Statement was received in the office of the State Engineer on the 7 day of March, 19 58, at 5:45 o'clock A. M. and has been duly recorded in said office in Book No. 6 of Registration Statements on page GR-1081

Witness my hand this 20 day of August, 19 58

Lewis A. Stanley  
(State Engineer)

By \_\_\_\_\_  
(Deputy)

GR 1081