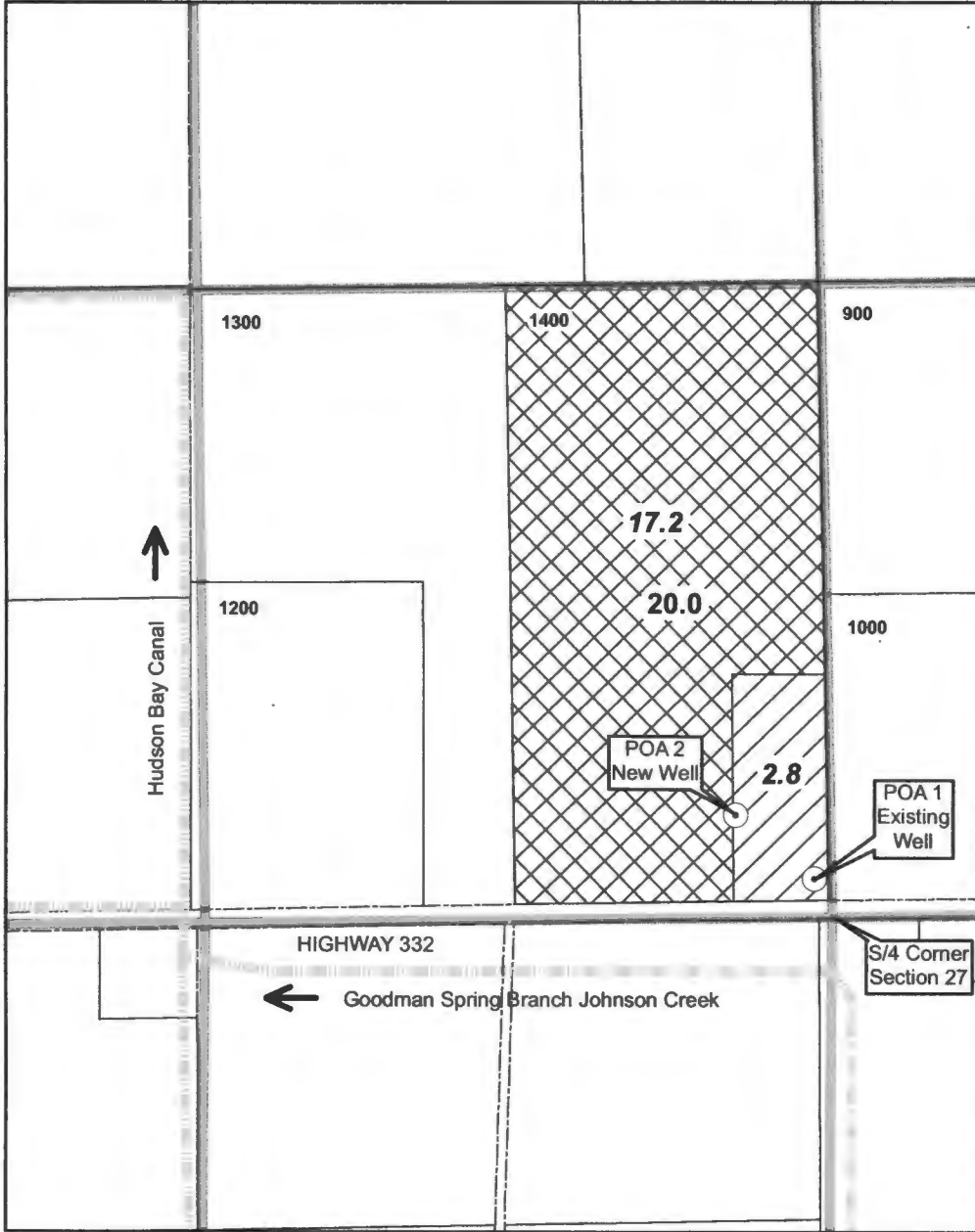


07981-1

SE/4 of SW/4 of S27, T6N, R35E, WM (Umatilla County)



Authorized POA

POA 1 an existing well located in the SE/4 of SW/4, Section 27, T6N, R35E, WM, at a distance 40 feet N and 35 feet W from S/4 Corner of Section 27. Well Log UMAT 4741. NOTE: GR-1167 incorrectly describes this location relative to the SE Corner Section 27, rather than S/4 Corner Section 27.

Proposed POA (Additional)

POA 2 a new proposed well to be located in the SE/4 of SW/4, Section 27, T6N, R35E, WM, at a distance 175 feet N and 205 feet W from S/4 Corner of Section 27. No well log yet (proposed well).

Authorized POU

GR-1167 currently authorizes irrigation of 20.0 acres in SE SW Sec 27.

Proposed POU

GR Claim Modification proposes to reduce irrigated acres from 20.0 acres to 17.2 acres. The water allocated to the 2.8 acres removed from irrigation will be used for industrial/commercial uses within the wine making facility.

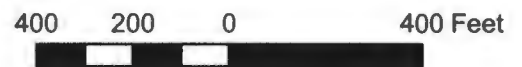
RECEIVED BY OWRD

FEB 21 2017

SALEM, OR RECEIVED BY OW

MAR 16 2017

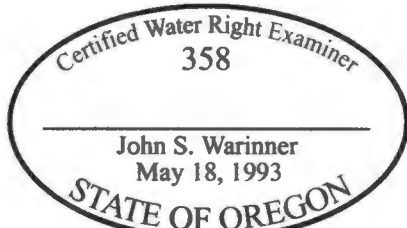
SALEM, OR



CHANGE IN CHARACTER/TYPE OF WATER USE

GR-1167 currently authorizes a maximum rate of 0.947 cfs (425 gpm) for irrigation.

GR Claim Modification proposes to reduce maximum rate for irrigation to 0.813 cfs (365 gpm) and authorize the balance of 0.134 cfs (60 gpm) to be used for industrial/commercial uses in the wine facility.



The purpose of this map is to identify the location of a water right. It is not intended to provide information regarding the location of property ownership boundary lines.

FOUNTAINHEAD  
19552 E Campbell Rd  
Bend, OR 97702  
541.815.4103 phone

GR CLAIM MOD MAP  
GR-1167  
Change Type of Use

in the name of  
CAYUSE VINEYARDS, LLC

Revised 20 JAN 2017